

Influenza Surveillance Report 2019–2020

Week 52 (Dec. 22–28, 2019)

Data extracted Jan.3, 2020 at 11:00 am

Next report date: Jan. 10, 2020

Provincial Update: Influenza activity in Manitoba is increasing overall. The decrease of influenza activity shown in this report is an artifact of a delay in provincial data entry. The reported laboratory data indicates an increase in influenza activity: the rate of respiratory patients who tested positive for influenza A increased from 10% in Week 50 to 12% in Week 52 and for influenza B increased from 14% to 28%. The flu report will continue to be updated as data entry is completed. For example, updated influenza activity from Week 52 will be included in the next report. In Week 52, 78% of influenza B cases were reported from Southern Health–Santé Sud RHA. Since September, almost 60% of reported influenza B cases were below the age of 15. The observed number of respiratory visits to the emergency department was the highest it has been in the last three seasons; the majority of visits were to the Children's Emergency Department of Health Sciences Centre in Winnipeg. Activity level in other syndromic indicators increased this week and was within expected levels at this time of a year.



National Update: Influenza activity continued to increase across multiple indicators. Regions across the country are reporting increased influenza activity. In week 50, the proportion of influenza B detections has increased resulting in an equal proportion of influenza A and B detections nationally. This season, the majority of hospitalizations reported have been associated with influenza A(H3N2). Approximately 55% of pediatric hospitalizations were associated with influenza B.

International Update: As of Week 51, seasonal influenza activity in the United States continued to increase and has been elevated for seven weeks. Overall, influenza B/Victoria viruses are the most common followed by influenza A(H1N1)pdm09. However, the predominant virus varies by region and age group.

Laboratory	Week 51
Laboratory-confirmed influenza cases:	
<ul style="list-style-type: none"> Influenza A: 15 Influenza B: 38 ↑ 	
From Sept.	
<ul style="list-style-type: none"> Influenza A: 96 Influenza B: 179 	

Severity	This Week
Severe outcomes associated with influenza:	
<ul style="list-style-type: none"> Hospitalizations: 0 ICU* admissions: 0 Deaths: 0 	
From Sept.	
<ul style="list-style-type: none"> Hospitalizations: 35 ICU* admissions: 5 Deaths: 1 	

Outbreaks	This Week
Laboratory-confirmed influenza outbreaks:	
<ul style="list-style-type: none"> Influenza A: <5 Influenza B: 0 Influenza A & B: 0 	
From Sept.	
<ul style="list-style-type: none"> Influenza A: 4 Influenza B: 1 Influenza A & B: 0 	

Calls	This Week
Calls to Influenza Service at Health Links–Info Santé: 24	

Physician Visits	This Week
Visits to sentinel physicians due to ILI: 5.3 % ↑	

Vaccine	As of Dec.27
<ul style="list-style-type: none"> Percentage of Manitoba residents immunized with the seasonal influenza vaccine: 21.4% 	

Antiviral	This Week
Units of antiviral dispensed from pharmacies: 51 ↑	

ER Visits	This Week
Respiratory visits to Emergency Department (ED): 262/day ↑	

Note. * ICU admissions were also included in hospitalizations. Numbers are subject to change. Missed events in the current report due to a delay of submission to MHSAL will be included in later reports when data become available.

Influenza Surveillance Report 2019–2020

Figure 1. Weekly Cases of Laboratory-Confirmed Influenza, Manitoba

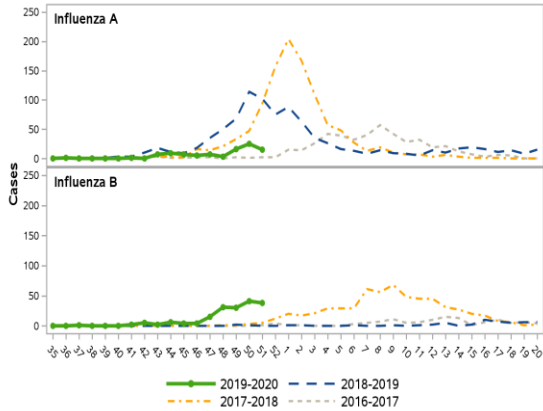


Figure 3. Weekly Influenza and ILI Outbreaks, Manitoba

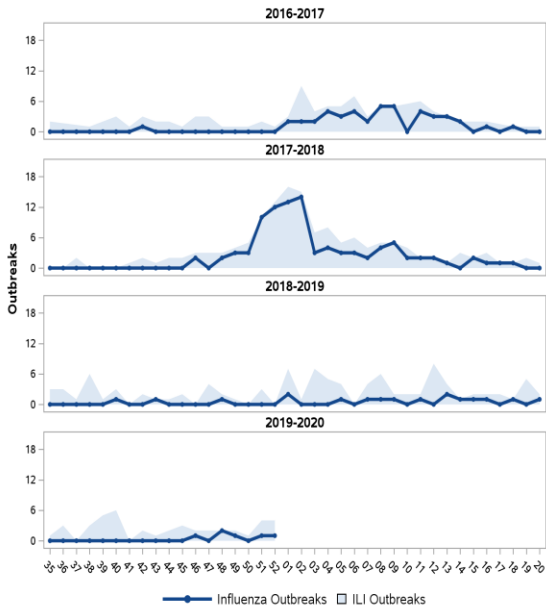


Figure 2. Distribution of Influenza Cases since September 1, 2019 by Age Group, Manitoba

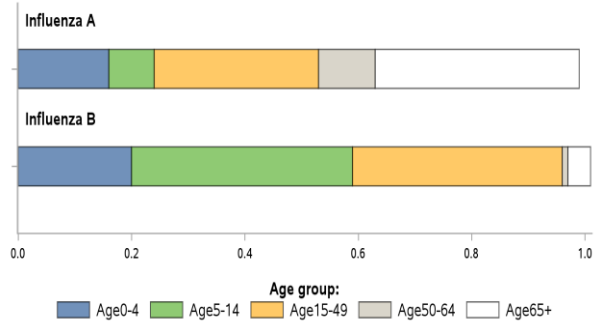


Figure 4. Average Daily Respiratory Visits to Emergency Department and % of Total Visits, Winnipeg Regional Health Authority, Manitoba

