
Manitoba 

**Population Report
June 1, 2016**

Manitoba Health, Seniors and Active Living

Manitoba Health, Healthy Living and Seniors Population Report

June 1, 2016

Inquiries can be directed to:

**Manitoba Health, Healthy Living and Seniors
Health Information Management Branch
Room 4040
300 Carlton Street
Winnipeg Manitoba R3B 3M9**

Telephone: (204) 788-6354

2016 Population Publication Report - Contents

1 Introduction

Foreword

Population Changes June 1, 2015 to June 1, 2016

Deaths by Age (Fig. 1a)

Deaths by Age and Gender (Fig. 1b and 1c)

Migration In and Out of the Province by Age (Fig. 2a)

Migration In and Out of the Province by Age and Gender (Fig. 2b and 2c)

2 Population of Manitoba – June 1, 2016

Population of Manitoba by Age and Gender

Population of Manitoba by Age (Fig. 3a)

Population of Manitoba by Age and Gender (Fig. 3b and 3c)

Map of Manitoba RHA Boundaries (Fig. 4)

Population of Manitoba by RHA, Age, and Gender

Population of Manitoba First Nations, by RHA, Age and On/Off Reserve Status

Population of Manitoba by RHA, 2012 – 2016

Percent of Population by RHA, 2012 and 2016 (Fig. 5)

Population of Manitoba by RHA (Age 65+), 2012 – 2016

Percent of Population by RHA (Age 65+), 2012 – 2016 (Fig. 6)

3 Population of Regional Health Authorities – June 1, 2016

Interlake-Eastern RHA

Population by District, Age, and Gender

Population by District, 2012 – 2016

Population by District (Age 65+), 2012 – 2016

Population by Municipality, Age, and Gender

Population by Municipality, 2012 – 2016

Population by Municipality (Age 65+), 2012 – 2016

Northern RHA

Population by District, Age, and Gender

Population by District, 2012 – 2016

Population by District (Age 65+), 2012 – 2016

Population by Municipality, Age, and Gender

Population by Municipality, 2012 – 2016

Population by Municipality (Age 65+), 2012 – 2016

Prairie Mountain Health

Population by District, Age, and Gender

Population by District, 2012 – 2016

Population by District (Age 65+), 2012 – 2016

Population by Municipality, Age, and Gender

Population by Municipality, 2012 – 2016

Population by Municipality (Age 65+), 2012 – 2016

3 Manitoba Population by RHA – June 1, 2016 (cont.)

Southern Health-Santé Sud

- Population by District, Age, and Gender
- Population by District, 2012 – 2016
- Population by District (Age 65+), 2012 – 2016
- Population by Municipality, Age, and Gender
- Population by Municipality, 2012 – 2016
- Population by Municipality (Age 65+), 2012 – 2016

Winnipeg RHA

- Map of Winnipeg Community Area Boundaries (Figure 7)
- Population by Community Area, Neighborhood Cluster, Age, and Gender
- Population by Municipality, Age, and Gender
- Population by Municipality, 2012 – 2016
- Population by Municipality (Age 65+), 2012 – 2016

Part 1

Manitoba Population Report – 2016

Introduction and Overview

FOREWORD

The population data shown in this report are based on records of residents registered with Manitoba Health as at June 1, 2016.

Data for the regions include population of cities, towns, villages, rural municipalities, local government districts, and unorganized territories. It should be noted that villages and towns are separately identified if these are incorporated. If unincorporated, the population counts are included in the rural municipality in which these are located.

Population for small areas (for example, a rural town) can be biased because the mailing address may be reported as the place of residence. An individual residing outside the town, but having a mailing address there, may be counted as living within the town. This bias in the population figures is reduced as the catchment area increases. Thus, regional estimates are not significantly affected by the mis-classification bias. Fluctuations from year to year for these small areas might also be affected by changes to mail delivery locations assigned by Canada Post.

The type of place indicates First Nations, unorganized territory, and municipal status of incorporated places (city, town, village, rural municipality, and local government district). The following list indicates the abbreviations used for types of places:

FN First Nation Band

LGD Local Government District - a designated area having no local government; administered by the province through a resident administrator.

R.H.A. Regional Health Authority

RM Rural Municipality

POPULATION REPORTING CHANGES

Current-year and five-year populations for RHA Districts were tabulated using the RHA District definitions current as of June 1st, 2016.

MUNICIPAL AMALGAMATIONS

A series of municipal amalgamations, which were enacted between November 2013 and May 2014, came into effect as of January 1st, 2015. The 2016 population reports use the amalgamated municipalities, because these municipalities are the municipalities defined at the population date. Populations by pre-amalgamation municipality were provided as an appendix to the 2015 population reports; these pre-amalgamation populations have not been provided in the 2016 reports, however, and will not be provided as part of population reports for future years either.

Population Changes

The purpose of this section is to highlight changes in the population of Manitoba. Changes are determined by comparing the registration file for the current year to that of the previous year. A file is created for additions (residents on the current file but not on the previous file) and one for deletions (residents on the previous file and not on the current file). After determining reason for coverage or cancellation, those coded as deaths, births and other(1) are separated, leaving only arrivals and departures. The deletions are subtracted from the additions with a resulting net migration.

Figures 1a, 1b, and 1c depict the actual number of residents cancelled from the registration system upon notification of death during the period June 1, 2015 to June 1, 2016. Figures 1b and 1c are female and male profiles.

Figures 2a, 2b, and 2c represent population migration. In-migration and out-migration with a resulting net migration trend line are depicted. Manitoba gained population through in-migration between June 1, 2015 and June 1, 2016. There were 33,453 in-migrants and 13,405 out-migrants resulting in a net in-migration of 20,048. Figures 2b and 2c are the female and male trends.

(1) Member of the Armed Forces, inmate of a penitentiary, or not located.

Figure 1a

Number of Deaths by Single Year of Age - June 1, 2015 to June 1, 2016

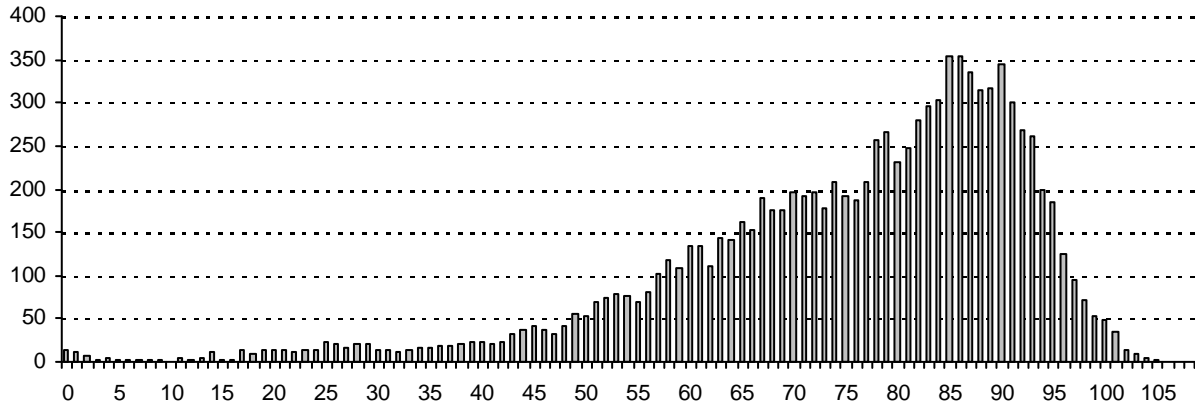


Figure 1b

Number of Female Deaths by Single Year of Age - June 1, 2015 to June 1, 2016

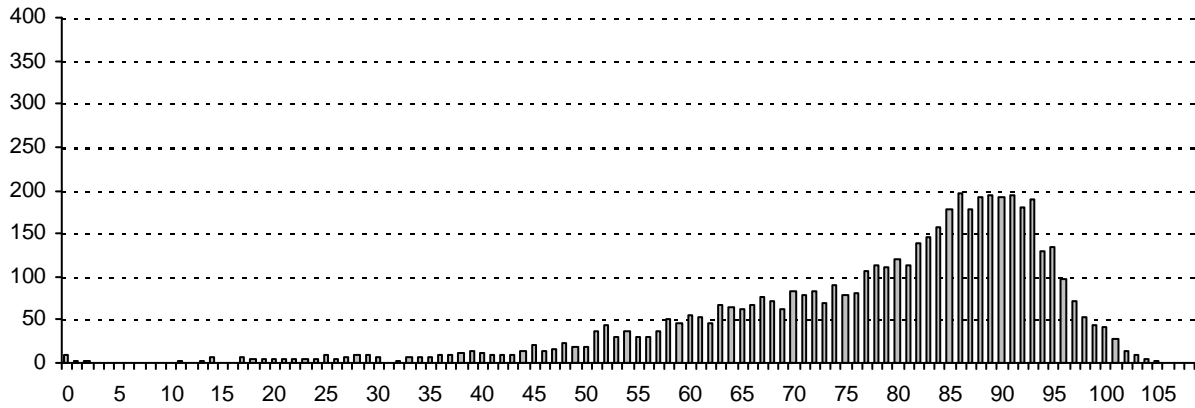


Figure 1c

Number of Male Deaths by Single Year of Age - June 1, 2015 to June 1, 2016

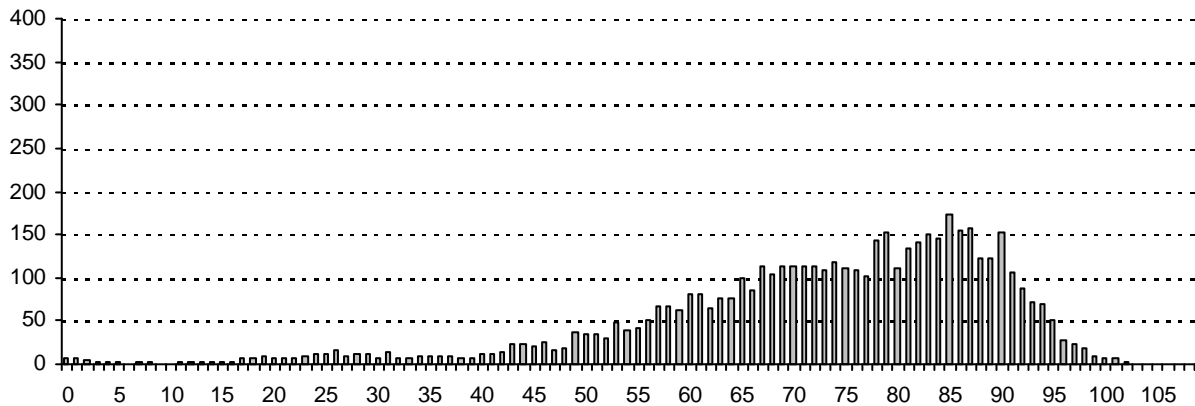


Figure 2a

Total Migration In and Out of the Province and Net Migration by Single Year of Age - June 1, 2015 to June 1, 2016



Figure 2b

Migration In and Out of the Province and Net Migration of Females by Single Year of Age - June 1, 2015 to June 1, 2016

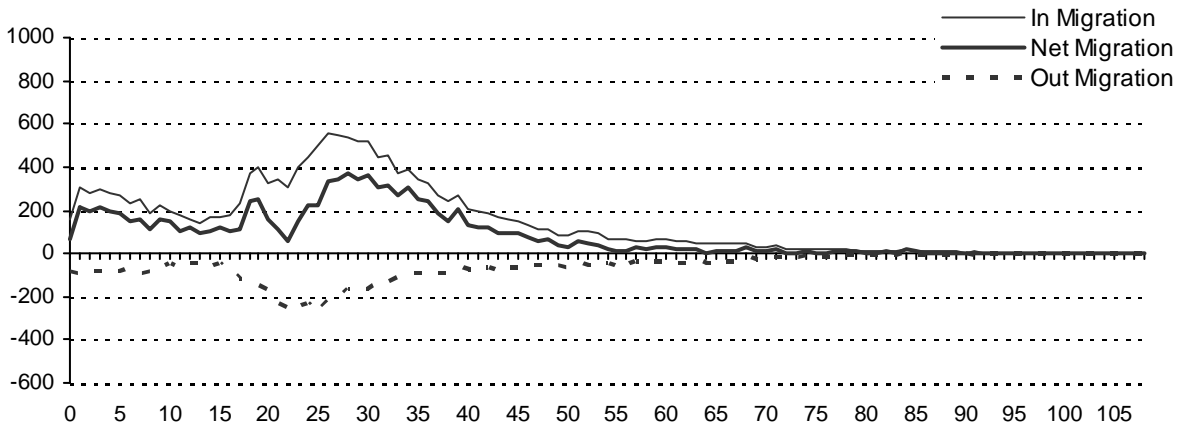
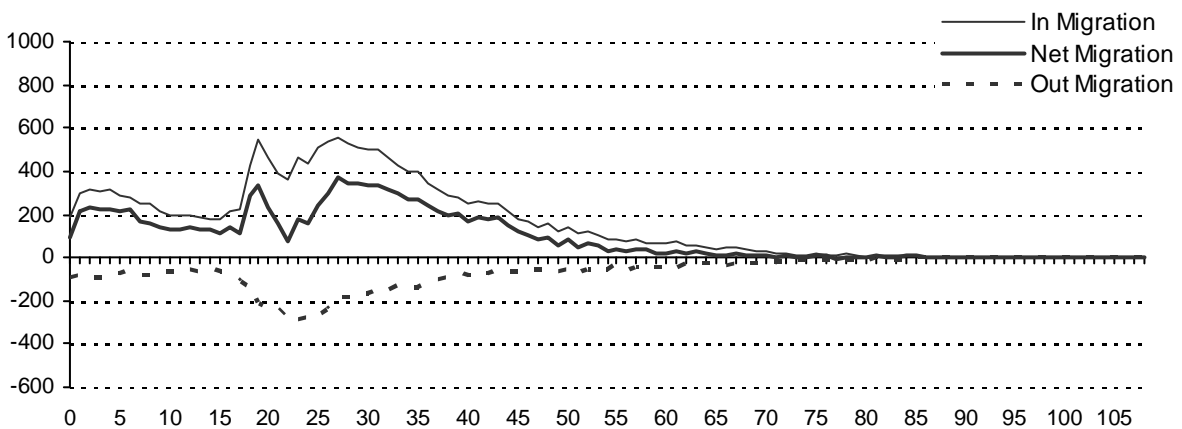


Figure 2c

Migration In and Out of the Province and Net Migration of Males by Single Year of Age - June 1, 2015 to June 1, 2016



This page intentionally left blank

Part 2

Population of Manitoba

June 1, 2016

Population of Manitoba by single year of age and gender

Age	Total	Male	Female
Under 1	16,864	8,657	8,207
1	17,023	8,779	8,244
2	17,031	8,842	8,189
3	17,327	8,942	8,385
4	16,976	8,691	8,285
Sub-Total	85,221	43,911	41,310
5	17,055	8,797	8,258
6	17,423	8,863	8,560
7	17,502	8,864	8,638
8	17,281	8,888	8,393
9	16,947	8,596	8,351
Sub-Total	86,208	44,008	42,200
10	16,280	8,341	7,939
11	15,990	8,206	7,784
12	16,178	8,225	7,953
13	16,059	8,303	7,756
14	16,119	8,362	7,757
Sub-Total	80,626	41,437	39,189
15	16,424	8,468	7,956
16	16,955	8,727	8,228
17	17,034	8,806	8,228
18	17,399	9,023	8,376
19	18,071	9,381	8,690
Sub-Total	85,833	44,405	41,428
20	18,913	9,755	9,158
21	19,492	10,052	9,440
22	19,589	10,239	9,350
23	19,327	9,888	9,439
24	20,015	10,219	9,796
Sub-Total	97,336	50,153	47,183
25	19,922	10,027	9,895
26	19,504	9,809	9,695
27	18,910	9,509	9,401
28	18,556	9,199	9,357
29	18,828	9,370	9,458
Sub-Total	95,720	47,914	47,806
30	18,871	9,339	9,532
31	18,701	9,297	9,404
32	18,645	9,261	9,384
33	18,405	9,176	9,229
34	18,209	9,085	9,124
Sub-Total	92,831	46,158	46,673
35	17,993	8,936	9,057
36	17,668	8,775	8,893
37	17,295	8,603	8,692
38	17,193	8,521	8,672
39	16,923	8,338	8,585
Sub-Total	87,072	43,173	43,899
40	17,108	8,597	8,511
41	16,930	8,470	8,460
42	16,533	8,372	8,161
43	16,739	8,459	8,280
44	17,082	8,570	8,512
Sub-Total	84,392	42,468	41,924

Age	Total Population	
	Male	Female
45	17,185	8,648
46	16,959	8,476
47	16,729	8,291
48	16,460	8,098
49	16,296	8,080
Sub-Total	83,629	41,729
50	17,448	8,647
51	18,538	9,320
52	18,842	9,335
53	19,005	9,501
54	18,932	9,497
Sub-Total	92,765	46,238
55	18,853	9,313
56	18,631	9,186
57	17,669	8,848
58	17,527	8,790
59	17,122	8,607
Sub-Total	89,802	44,744
60	16,442	8,122
61	16,465	8,187
62	15,853	7,999
63	14,910	7,756
64	14,288	7,106
Sub-Total	77,958	39,337
65	13,715	7,099
66	13,390	6,799
67	12,905	6,653
68	12,814	6,656
69	12,647	6,524
Sub-Total	65,471	33,731
70	10,388	5,456
71	9,534	4,872
72	9,354	4,772
73	8,916	4,717
74	7,916	4,206
Sub-Total	46,108	24,023
75	7,737	4,206
76	6,960	3,765
77	6,657	3,604
78	6,411	3,476
79	5,769	3,198
Sub-Total	33,534	18,249
80	5,684	3,224
81	5,249	2,963
82	4,979	2,815
83	4,776	2,763
84	4,558	2,719
Sub-Total	25,246	14,484
85	4,113	2,533
86	3,870	2,386
87	3,413	2,141
88	3,270	2,045
89	2,636	1,754
Sub-Total	17,302	10,859

Male	Female	File Status at:	
665,508	673,800	June 1, 2016	
Age	Total	Male	Female
90	2,402	795	1,607
91	2,178	691	1,487
92	1,764	500	1,264
93	1,430	392	1,038
94	1,212	324	888
Sub-Total	8,986	2,702	6,284
95	922	209	713
96	659	168	491
97	478	128	350
98	347	75	272
99	269	57	212
Sub-Total	2,675	637	2,038
100	173	33	140
101	148	27	121
102	72	17	55
103	60	20	40
104	35	8	27
Sub-Total	488	105	383
105	17	3	14
106	16	3	13
107	9	2	7
108	6	3	3
109	1	1	0
Sub-Total	49	12	37
110	3	1	2
111	2	2	0
112	0	0	0
113	0	0	0
114	0	0	0
Sub-Total	5	3	2
115+	1	1	0
Total Population	1,339,308	665,508	673,800

Age Group	Total	Male	Female
0-17	302,468	155,357	147,111
18-64	836,975	420,376	416,599
65-79	145,113	69,110	76,003
80+	54,752	20,665	34,087
Sub-Total	1,339,308	665,508	673,800
65+	199,865	89,775	110,090
70+	134,394	58,035	76,359
85+	29,506	9,903	19,603
90+	12,204	3,460	8,744
Sub-Total	475,959	211,173	264,786
0-14	252,055	129,356	122,699
15-24	183,219	94,558	88,661
25-34	188,551	94,072	94,479
35-44	171,464	85,641	85,823
45-54	176,394	88,427	87,967
55-64	167,760	83,679	84,081
65-74	111,579	53,825	57,754
75+	88,286	35,950	52,336

Figure 3a

Manitoba Health Population by Single Year of Age, June 1, 2016

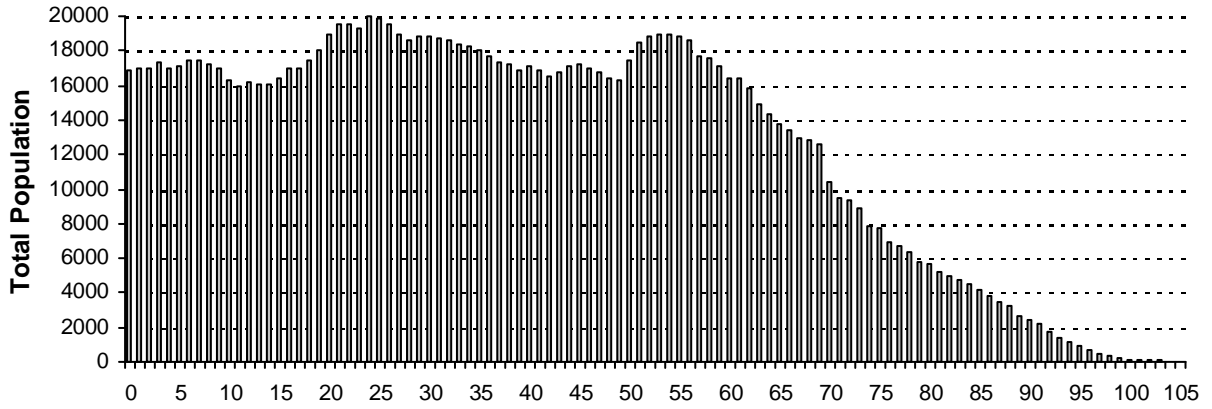


Figure 3b

Manitoba Health Female Population by Single Year of Age, June 1, 2016

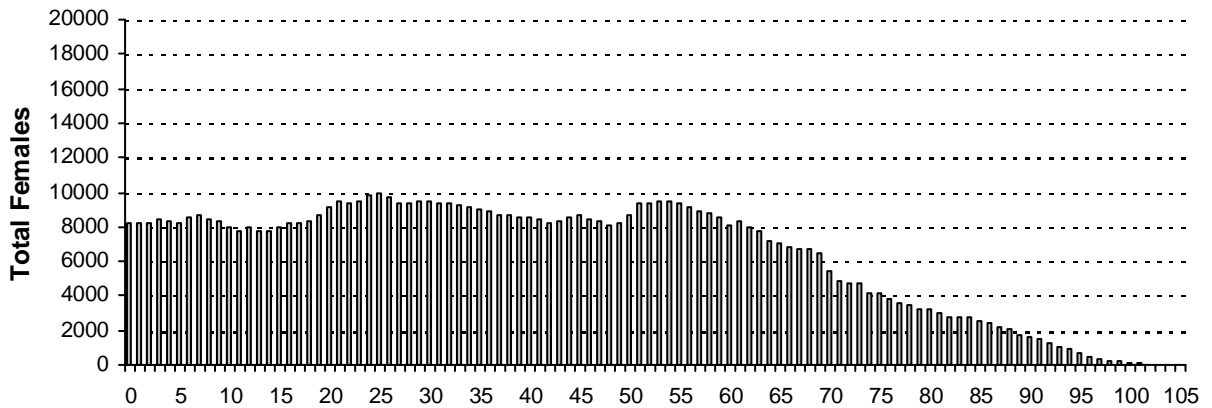
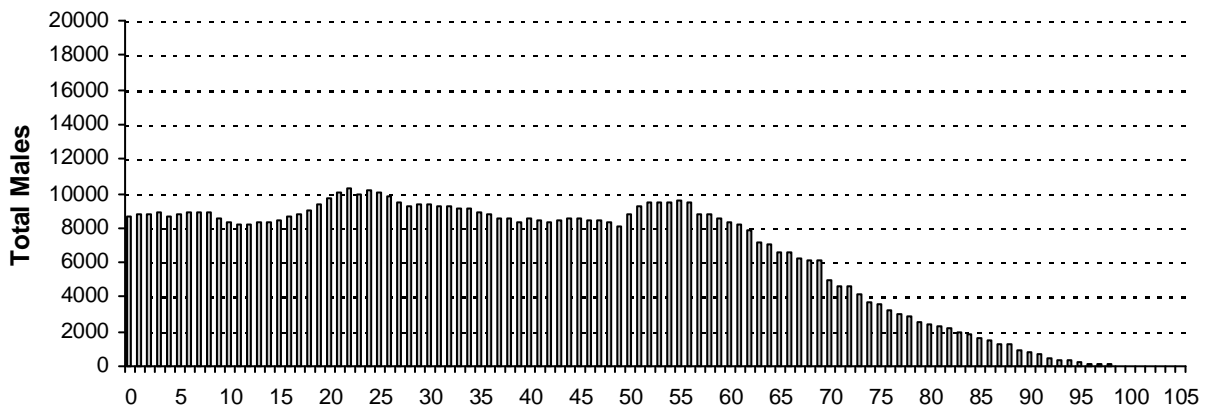
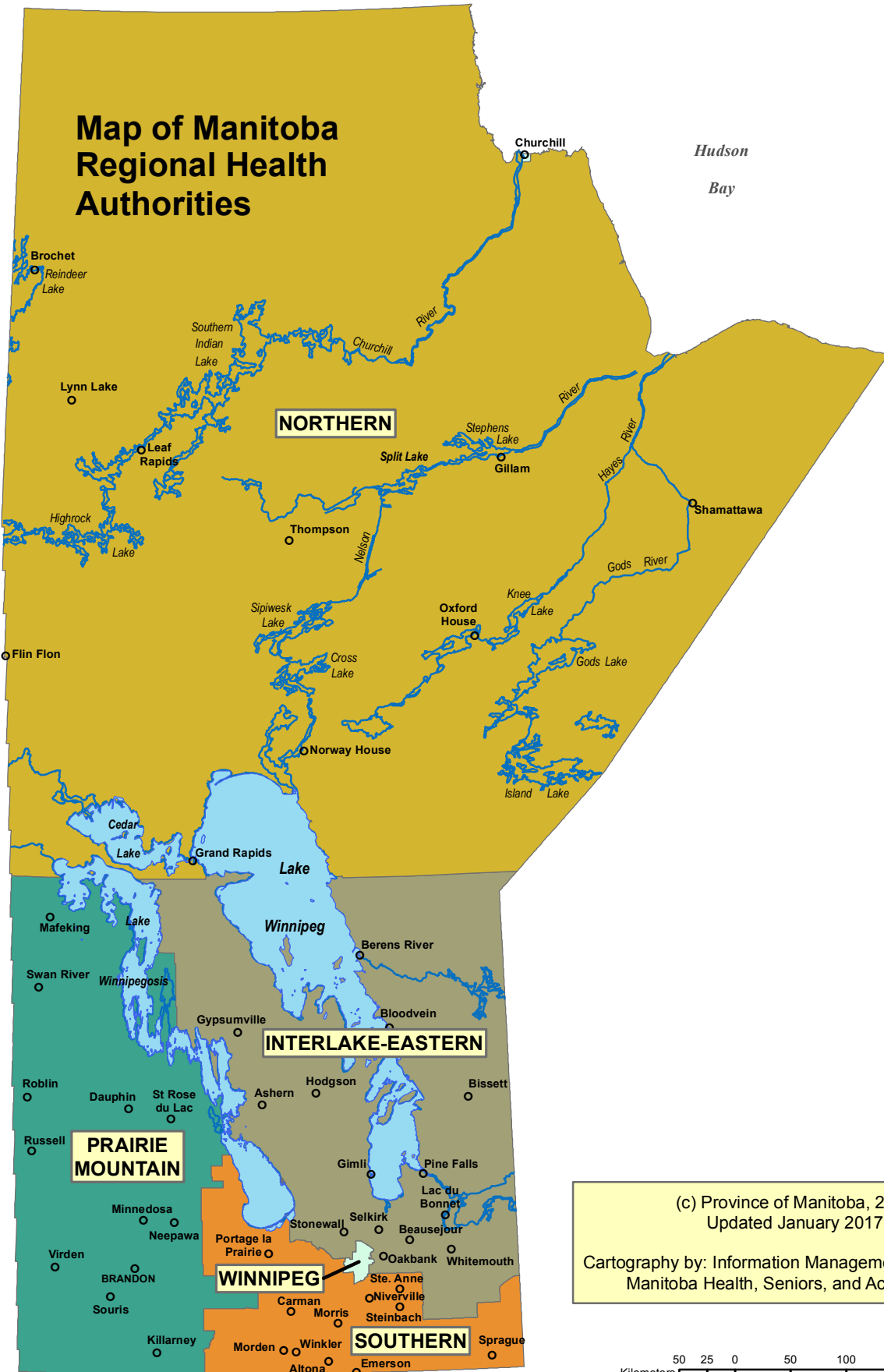


Figure 3c

Manitoba Health Male Population by Single Year of Age, June 1, 2016

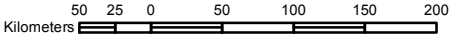


Map of Manitoba Regional Health Authorities



(c) Province of Manitoba, 2017
Updated January 2017

Cartography by: Information Management & Analytics,
Manitoba Health, Seniors, and Active Living



Population of Manitoba by Regional Health Authority (R.H.A.)(1), Gender, and Age Group - June 1, 2016

R.H.A.	Gender	Under 1	1 - 4	5 - 9	10 - 14	15 - 19	20 - 24	25 - 29	30 - 34	35 - 39	40 - 44	45 - 49	50 - 54	55 - 59	60 - 64	65 - 69	70 - 74	75 +	Total
01 - Winnipeg Health Region																			
	F	4,073	16,639	21,520	20,595	22,834	27,520	29,077	28,782	26,919	25,213	24,890	27,054	25,705	22,910	19,848	13,950	31,837	389,366
	M	4,377	17,831	22,332	21,731	24,449	29,151	29,065	28,429	26,223	25,273	24,873	27,187	25,667	21,568	17,696	12,001	20,324	378,177
	T	8,450	34,470	43,852	42,326	47,283	56,671	58,142	57,211	53,142	50,486	49,763	54,241	51,372	44,478	37,544	25,951	52,161	767,543
02 - Prairie Mountain Health Region																			
	F	1,109	4,243	5,348	4,922	4,937	5,458	5,695	5,399	5,160	4,968	4,729	5,595	5,942	5,368	4,795	3,594	8,420	85,682
	M	1,116	4,552	5,700	5,171	5,238	5,625	5,459	5,429	5,219	5,060	4,756	5,361	5,824	5,433	4,641	3,420	6,074	84,078
	T	2,225	8,795	11,048	10,093	10,175	11,083	11,154	10,828	10,379	10,028	9,485	10,956	11,766	10,801	9,436	7,014	14,494	169,760
03 - Interlake-Eastern Health Region																			
	F	747	2,899	3,683	3,586	3,892	3,949	3,566	3,437	3,320	3,666	4,209	5,133	5,095	4,546	3,941	2,744	4,733	63,146
	M	696	3,039	3,894	3,848	4,134	4,579	3,799	3,470	3,397	3,806	4,098	5,246	5,225	4,853	4,006	2,881	3,988	64,959
	T	1,443	5,938	7,577	7,434	8,026	8,528	7,365	6,907	6,717	7,472	8,307	10,379	10,320	9,399	7,947	5,625	8,721	128,105
04 - Northern Health Region																			
	F	799	3,169	3,991	3,174	3,000	3,169	3,014	2,579	2,294	2,180	2,169	2,132	1,905	1,405	1,027	676	938	37,621
	M	875	3,322	4,094	3,337	3,168	3,183	2,970	2,487	2,242	2,299	2,298	2,245	2,086	1,565	1,155	700	777	38,803
	T	1,674	6,491	8,085	6,511	6,168	6,352	5,984	5,066	4,536	4,479	4,467	4,377	3,991	2,970	2,182	1,376	1,715	76,424
05 - Southern Health-Santé Sud Region																			
	F	1,479	6,153	7,658	6,912	6,815	7,087	6,454	6,476	6,206	5,897	5,732	6,324	6,097	5,108	4,120	3,059	6,408	97,985
	M	1,593	6,510	7,988	7,350	7,416	7,615	6,621	6,343	6,092	6,030	5,875	6,488	6,256	5,202	4,242	3,083	4,787	99,491
	T	3,072	12,663	15,646	14,262	14,231	14,702	13,075	12,819	12,298	11,927	11,607	12,812	12,353	10,310	8,362	6,142	11,195	197,476
Manitoba																			
	F	8,207	33,103	42,200	39,189	41,478	47,183	47,806	46,673	43,899	41,924	41,729	46,238	44,744	39,337	33,731	24,023	52,336	673,800
	M	8,657	35,254	44,008	41,437	44,405	50,153	47,914	46,158	43,173	42,468	41,900	46,527	45,058	38,621	31,740	22,085	35,950	665,508
	T	16,864	68,357	86,208	80,626	85,883	97,336	95,720	92,831	87,072	84,392	83,629	92,765	89,802	77,958	65,471	46,108	88,286	1,339,308
First Nations Summary																			
	F	1,302	4,968	6,309	5,030	4,582	4,840	4,344	3,491	2,989	2,816	2,821	2,518	1,905	1,325	870	561	690	51,361
	M	1,386	5,239	6,516	5,236	4,754	4,852	4,006	3,293	2,704	2,588	2,524	2,250	1,778	1,184	818	501	502	50,131
	T	2,688	10,207	12,825	10,266	9,336	9,692	8,350	6,784	5,693	5,404	5,345	4,768	3,683	2,509	1,688	1,062	1,192	101,492

(1) First nations residents are allocated to municipality and RHA by postal code. Summary includes all First Nations people regardless of where they reside.

Population by Regional Health Authority (1), First Nations On/Off Reserve, and Age Group - June 1, 2016

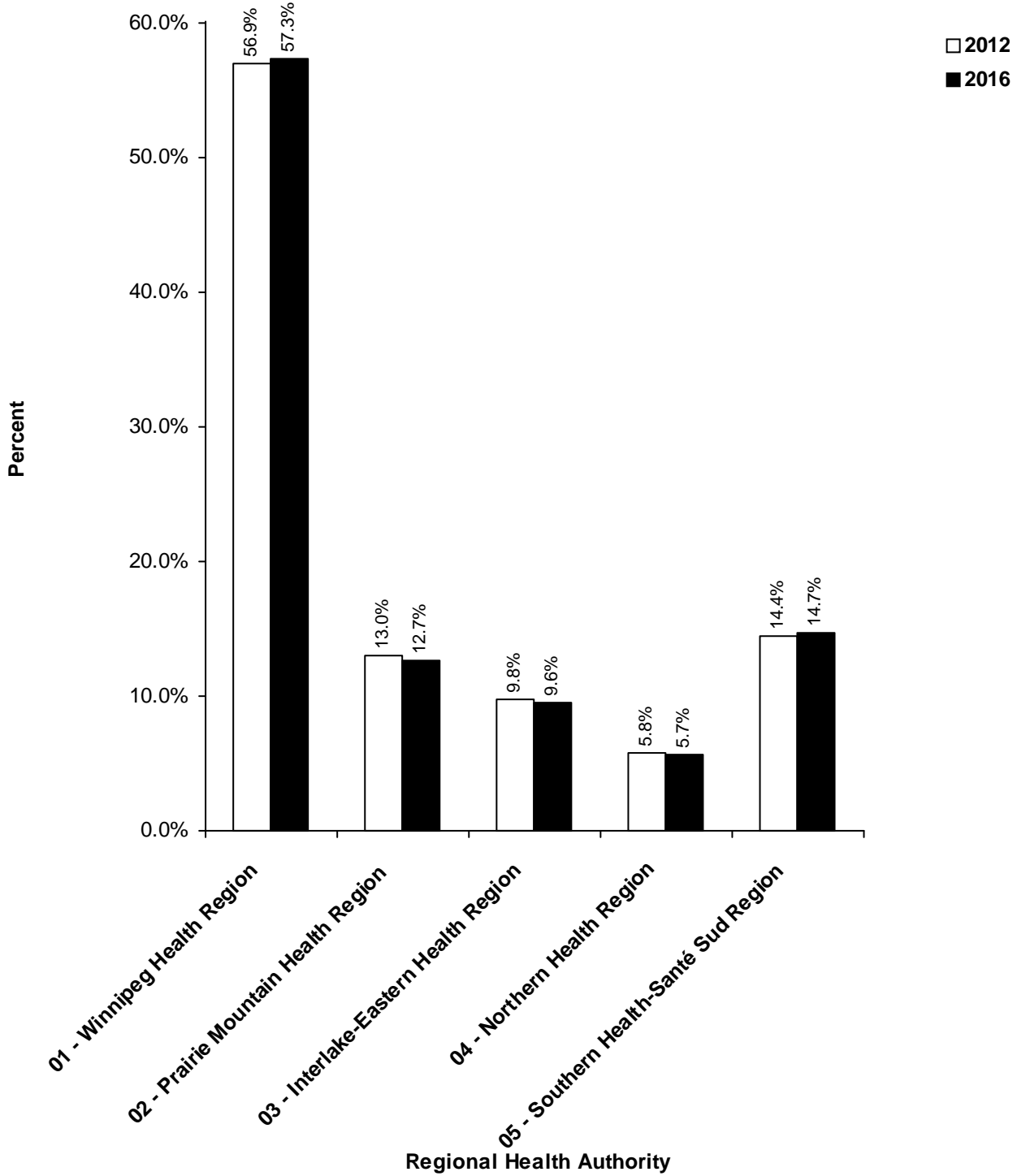
R.H.A.	Gender	Under 1	1 - 4	5 - 9	10 - 14	15 - 19	20 - 24	25 - 29	30 - 34	35 - 39	40 - 44	45 - 49	50 - 54	55 - 59	60 - 64	65 - 69	70 - 74	75 +	Total
01 – Winnipeg Health Region																			
	On	0	0	0	0	0	0	0	0	0	0	0	0	0	0	0	0	0	0
	Off	704	2,726	3,433	2,894	2,695	2,828	2,379	2,025	1,630	1,513	1,386	1,244	805	556	382	208	206	27,614
	T	704	2,726	3,433	2,894	2,695	2,828	2,379	2,025	1,630	1,513	1,386	1,244	805	556	382	208	206	27,614
02 – Prairie Mountain Health Region																			
	On	140	518	659	566	470	493	418	348	292	308	342	317	274	173	126	92	102	5,638
	Off	173	636	802	550	513	571	549	500	341	270	238	246	184	110	66	50	55	5,854
	T	313	1,154	1,461	1,116	983	1,064	967	848	633	578	580	563	458	283	192	142	157	11,492
03 – Interlake-Eastern Health Region																			
	On	247	938	1,247	1,022	1,010	1,016	854	700	612	655	753	720	592	398	274	168	215	11,421
	Off	77	298	363	280	305	367	269	241	171	167	160	163	113	81	61	29	35	3,180
	T	324	1,236	1,610	1,302	1,315	1,383	1,123	941	783	822	913	883	705	479	335	197	250	14,601
04 – Northern Health Region																			
	On	859	3,253	4,021	3,277	2,837	2,860	2,498	1,902	1,679	1,664	1,691	1,391	1,190	820	561	398	458	31,359
	Off	280	1,059	1,405	904	806	853	787	571	533	438	387	354	250	169	108	46	58	9,008
	T	1,139	4,312	5,426	4,181	3,643	3,713	3,285	2,473	2,212	2,102	2,078	1,745	1,440	989	669	444	516	40,367
05-Southern Health-Santé Sud Region																			
	On	117	431	506	459	406	400	309	284	242	234	242	212	174	140	73	51	34	4,314
	Off	91	348	389	314	294	304	287	213	193	155	146	121	101	62	37	20	29	3,104
	T	208	779	895	773	700	704	596	497	435	389	388	333	275	202	110	71	63	7,418
Manitoba																			
	On	1,363	5,140	6,433	5,324	4,723	4,769	4,079	3,234	2,825	2,861	3,028	2,640	2,230	1,531	1,034	709	809	52,732
	Off	1,325	5,067	6,392	4,942	4,613	4,923	4,271	3,550	2,868	2,543	2,317	2,128	1,453	978	654	353	383	48,760
	T	2,688	10,207	12,825	10,266	9,336	9,692	8,350	6,784	5,693	5,404	5,345	4,768	3,683	2,509	1,688	1,062	1,192	101,492

(1) First nations residents are allocated to municipality and RHA by postal code. Summary includes all First Nations people regardless of where they reside.

Summary of Provincial Population by Regional Health Authority

Regional Health Authority	2012	2013	2014	2015	2016
Winnipeg Health Region	723,491	734,187	745,603	754,389	767,543
Prairie Mountain Health Region	165,676	167,121	167,842	168,477	169,760
Interlake-Eastern Health Region	124,720	125,845	126,674	127,273	128,105
Northern Health Region	74,175	74,731	75,349	75,947	76,424
Southern Health-Santé Sud Region	183,326	187,384	190,841	194,257	197,476
Provincial Total	1,271,388	1,289,268	1,306,309	1,320,343	1,339,308

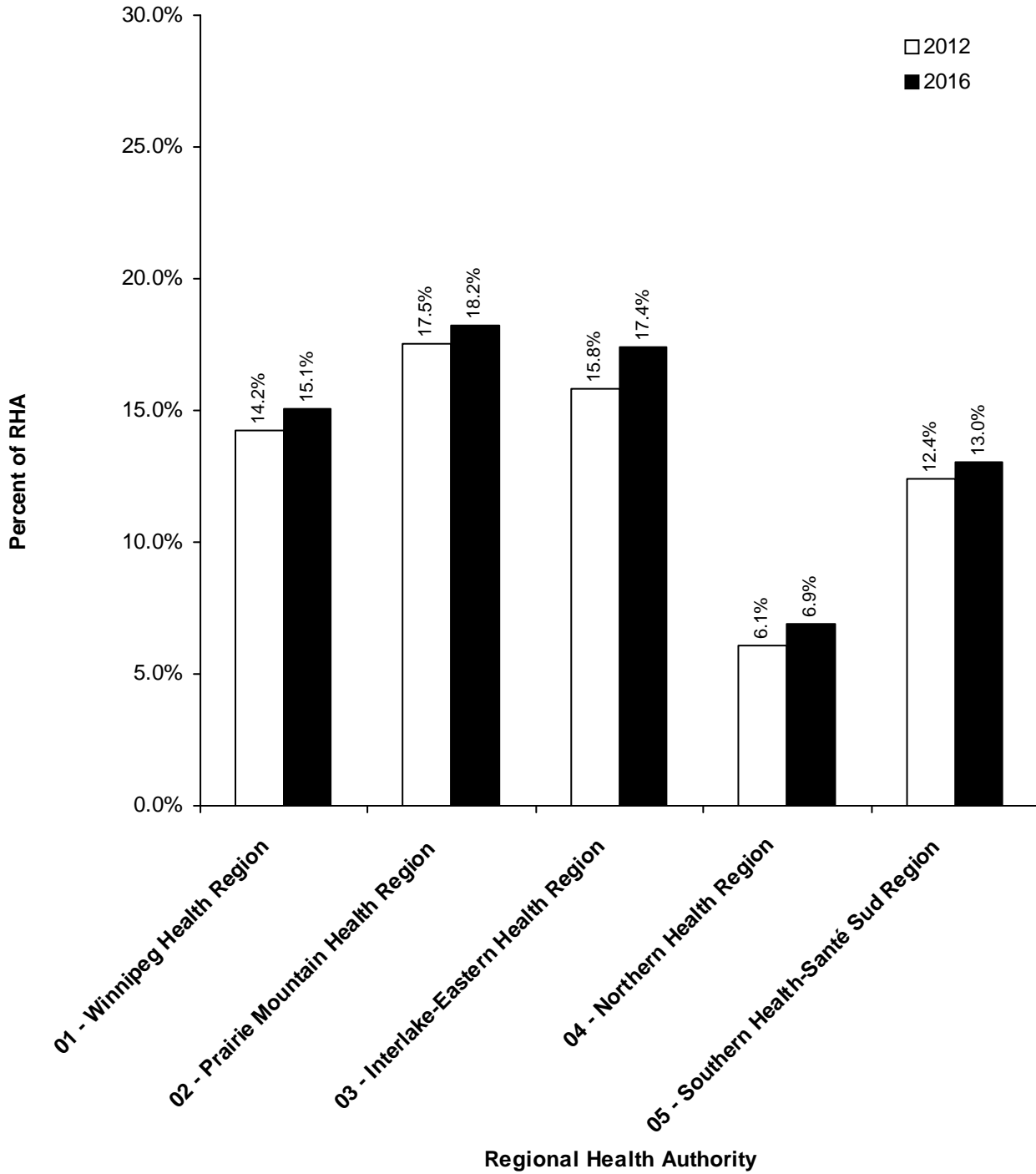
Figure 5
Percent of Population for Regional Health Authority
June 1, 2012 and 2016



Summary of Provincial Population by Regional Health Authority**Age Group 65+**

Regional Health Authority	2012	2013	2014	2015	2016
Winnipeg Health Region	102,883	106,119	109,364	112,306	115,656
Prairie Mountain Health Region	29,070	29,540	30,033	30,346	30,944
Interlake-Eastern Health Region	19,760	20,571	21,163	21,775	22,293
Northern Health Region	4,522	4,737	4,926	5,089	5,273
Southern Health-Santé Sud Region	22,723	23,477	24,178	24,871	25,699
Provincial Total	178,958	184,444	189,664	194,387	199,865

Figure 6
Percent of Population for Age Group 65+ by
Regional Health Authority
June 1, 2012 and 2016



Part 3

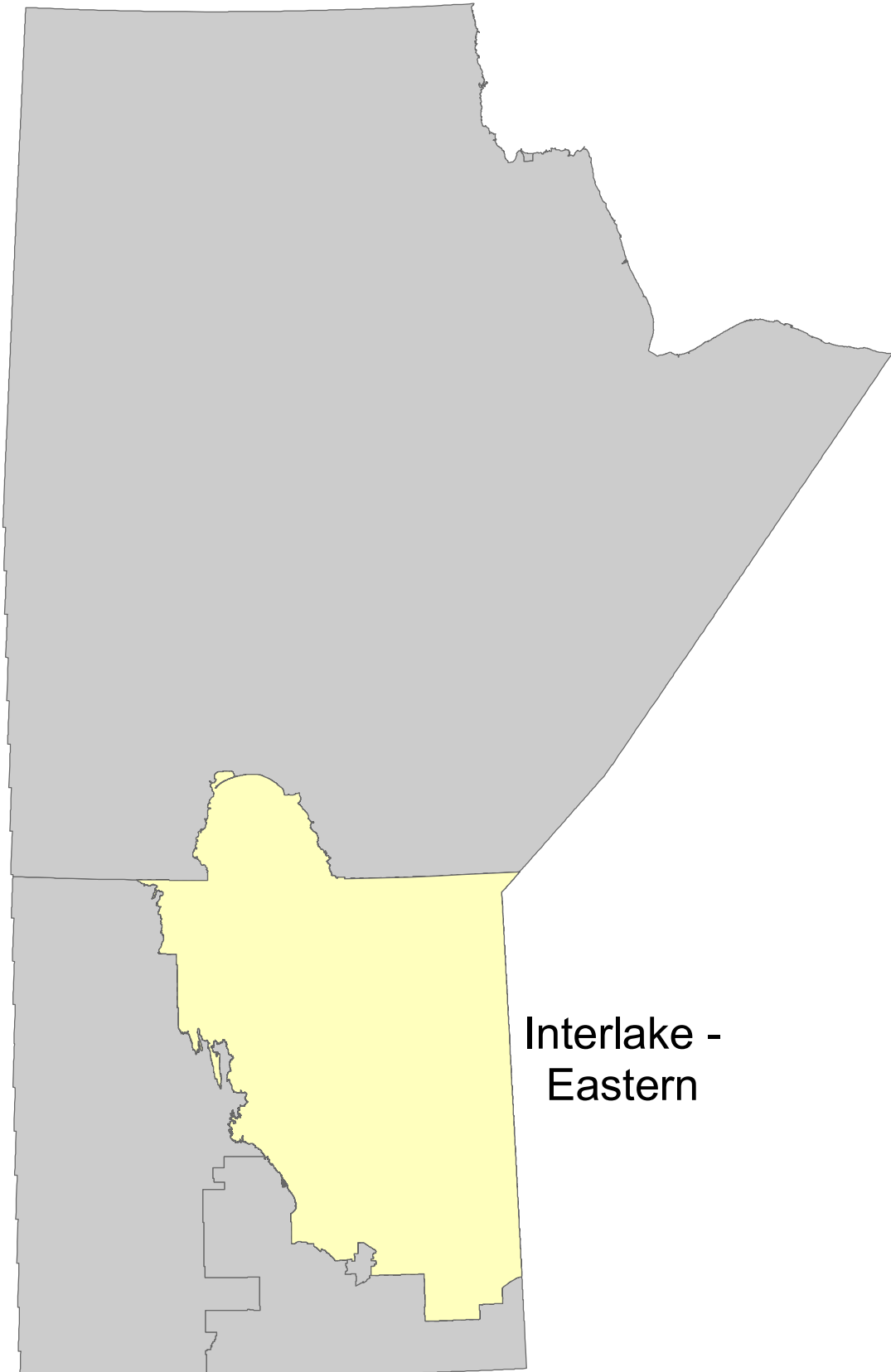
Population of Regional Health Authorities

June 1, 2016

Population of Interlake-Eastern RHA

June 1, 2016

Manitoba RHAs -- Interlake-Eastern



Interlake -
Eastern

Manitoba Health, Healthy Living and Seniors Population Report - June 1, 2016

Interlake-Eastern Health Region

District	Gender	Under 1	1 - 4	5 - 9	10 - 14	15 - 19	20 - 24	25 - 29	30 - 34	35 - 39	40 - 44	45 - 49	50 - 54	55 - 59	60 - 64	65 - 69	70 - 74	75 +	Total
Interlake-Eastern East Zone																			
Beausejour																			
	F	50	207	224	247	269	270	274	301	263	299	285	344	336	324	240	189	395	4,517
	M	55	209	261	260	304	328	275	302	313	319	319	373	362	331	248	183	298	4,740
Pinawa/Lac du Bonnet																			
	F	39	101	137	161	164	152	143	141	126	156	223	322	391	459	425	312	433	3,885
	M	27	126	142	133	164	217	156	153	149	168	198	307	413	466	432	335	452	4,038
Whiteshell																			
	F	13	56	57	72	70	85	77	75	65	55	80	123	137	137	123	75	114	1,414
	M	14	53	61	66	78	93	88	86	55	80	81	133	154	159	140	90	118	1,549
	F	102	364	418	480	503	507	494	517	454	510	588	789	864	920	788	576	942	9,816
	M	96	388	464	459	546	638	519	541	517	567	598	813	929	956	820	608	868	10,327

Interlake-Eastern North Zone

Eriksdale/Ashern																			
	F	54	181	219	195	215	208	221	162	137	176	188	217	210	162	163	117	237	3,062
	M	48	189	240	197	218	292	218	191	152	190	214	203	220	210	165	117	203	3,267
Fisher/Peguis																			
	F	64	222	310	241	271	235	230	191	167	174	226	246	221	158	131	94	185	3,366
	M	54	246	331	237	269	279	243	209	182	183	189	268	238	184	134	100	141	3,487
Powerview/Pine Falls																			
	F	58	203	281	257	269	248	182	189	162	170	193	166	209	193	129	69	125	3,103
	M	46	182	286	280	265	280	177	195	187	190	181	240	192	186	147	81	132	3,247
	F	176	606	810	693	755	691	633	542	466	520	607	629	640	513	423	280	547	9,531
	M	148	617	857	714	752	851	638	595	521	563	584	711	650	580	446	298	476	10,001

Interlake-Eastern Northern Remote Zone

Northern Remote																			
	F	58	230	236	166	170	185	167	119	98	98	118	93	78	38	29	18	23	1,924
	M	64	194	249	212	182	191	169	123	109	109	130	114	88	64	38	22	13	2,071
	F	58	230	236	166	170	185	167	119	98	98	118	93	78	38	29	18	23	1,924
	M	64	194	249	212	182	191	169	123	109	109	130	114	88	64	38	22	13	2,071

Manitoba Health, Healthy Living and Seniors Population Report - June 1, 2016

Interlake-Eastern Health Region

District	Gender	Under 1	1 - 4	5 - 9	10 - 14	15 - 19	20 - 24	25 - 29	30 - 34	35 - 39	40 - 44	45 - 49	50 - 54	55 - 59	60 - 64	65 - 69	70 - 74	75 +	Total
Interlake-Eastern Selkirk Zone																			
Selkirk																			
	F	46	219	267	254	315	344	340	318	285	267	340	394	378	355	325	262	735	5,444
	M	53	224	274	257	294	366	336	291	264	269	284	332	363	325	289	185	398	4,804
	F	46	219	267	254	315	344	340	318	285	267	340	394	378	355	325	262	735	5,444
	M	53	224	274	257	294	366	336	291	264	269	284	332	363	325	289	185	398	4,804

Interlake-Eastern South Zone

Springfield																			
	F	88	358	429	417	451	447	386	450	484	477	519	638	575	500	382	250	320	7,171
	M	76	371	453	462	519	472	402	403	477	500	515	632	579	523	414	290	339	7,427
St. Clements																			
	F	30	144	221	231	269	258	196	194	255	256	349	418	395	292	299	186	212	4,205
	M	40	163	205	238	313	291	208	242	197	279	334	458	452	328	296	200	207	4,451
Stonewall/Teulon																			
	F	107	425	553	570	559	580	579	545	549	641	630	804	758	603	528	349	706	9,486
	M	94	469	622	561	576	721	646	554	560	600	629	804	757	686	510	365	523	9,677
Wpg Beach/St. Andrews																			
	F	74	260	378	429	478	517	396	413	411	522	646	820	765	648	559	371	440	8,127
	M	51	274	392	522	514	597	474	371	411	536	622	804	808	727	578	418	470	8,569
	F	299	1,187	1,581	1,647	1,757	1,802	1,557	1,602	1,699	1,896	2,144	2,680	2,493	2,043	1,768	1,156	1,678	28,989
	M	261	1,277	1,672	1,783	1,922	2,081	1,730	1,570	1,645	1,915	2,100	2,698	2,596	2,264	1,798	1,273	1,539	30,124

Manitoba Health, Healthy Living and Seniors Population Report - June 1, 2016

Interlake-Eastern Health Region

District	Gender	Under 1	1 - 4	5 - 9	10 - 14	15 - 19	20 - 24	25 - 29	30 - 34	35 - 39	40 - 44	45 - 49	50 - 54	55 - 59	60 - 64	65 - 69	70 - 74	75 +	Total
Interlake-Eastern West Zone																			
Arborg/Riverton																			
	F	34	136	151	149	175	173	160	129	116	141	132	149	159	163	126	106	212	2,411
	M	41	146	163	196	195	175	159	144	130	142	138	181	162	152	136	108	157	2,525
Gimli																			
	F	19	88	119	97	118	127	108	122	113	124	155	236	302	342	344	235	422	3,071
	M	10	109	98	115	115	135	129	115	114	123	133	229	255	311	329	249	372	2,941
St. Laurent																			
	F	13	69	101	100	99	120	107	88	89	110	125	163	181	172	138	111	174	1,960
	M	23	84	117	112	128	142	119	91	97	118	131	168	182	201	150	138	165	2,166
	F	66	293	371	346	392	420	375	339	318	375	412	548	642	677	608	452	808	7,442
	M	74	339	378	423	438	452	407	350	341	383	402	578	599	664	615	495	694	7,632
RHA Sub-Total (Sex)																			
	F	747	2,899	3,683	3,586	3,892	3,949	3,566	3,437	3,320	3,666	4,209	5,133	5,095	4,546	3,941	2,744	4,733	63,146
	M	696	3,039	3,894	3,848	4,134	4,579	3,799	3,470	3,397	3,806	4,098	5,246	5,225	4,853	4,006	2,881	3,988	64,959
RHA Total		1,443	5,938	7,577	7,434	8,026	8,528	7,365	6,907	6,717	7,472	8,307	10,379	10,320	9,399	7,947	5,625	8,721	128,105

Interlake-Eastern Health Region

District	2012	2013	2014	2015	2016
Interlake-Eastern East Zone					
Beausejour	8,662	8,828	9,039	9,148	9,257
Pinawa/Lac du Bonnet	7,951	7,932	7,908	7,844	7,923
Whiteshell	2,962	2,959	2,998	2,978	2,963
Interlake-Eastern North Zone					
Eriksdale/Ashern	6,775	6,655	6,425	6,285	6,329
Fisher/Peguis	6,497	6,649	6,712	6,773	6,853
Powerview/Pine Falls	6,365	6,391	6,456	6,407	6,350
Interlake-Eastern Northern Remote Zone					
Northern Remote	3,736	3,863	3,903	3,972	3,995
Interlake-Eastern Selkirk Zone					
Selkirk	9,819	9,884	10,013	10,132	10,248
Interlake-Eastern South Zone					
Springfield	13,581	13,808	14,066	14,364	14,598
St. Clements	8,186	8,352	8,492	8,539	8,656
Stonewall/Teulon	18,760	18,875	19,065	19,139	19,163
Wpg Beach/St. Andrews	16,468	16,562	16,587	16,672	16,696
Interlake-Eastern West Zone					
Arborg/Riverton	4,902	4,972	4,909	4,949	4,936
Gimli	5,883	5,922	5,982	5,961	6,012
St. Laurent	4,173	4,193	4,119	4,110	4,126
R.H.A. Total	124,720	125,845	126,674	127,273	128,105

Note: Manitoba Health Districts are defined by the RHAs, and are subject to change over time. For comparability, all populations have been tabulated using current district definitions, even if different definitions were in use during that population's year.

Interlake-Eastern Health Region	Age Group 65+				
	District	2012	2013	2014	2015
Interlake-Eastern East Zone					
Beausejour	1,438	1,467	1,507	1,549	1,553
Pinawa/Lac du Bonnet	2,128	2,199	2,287	2,333	2,389
Whiteshell	601	616	635	643	660
Interlake-Eastern North Zone					
Eriksdale/Ashern	974	983	989	1,003	1,002
Fisher/Peguis	745	769	769	776	785
Powerview/Pine Falls	615	655	672	669	683
Interlake-Eastern Northern Remote Zone					
Northern Remote	136	134	138	140	143
Interlake-Eastern Selkirk Zone					
Selkirk	1,937	1,992	2,080	2,148	2,194
Interlake-Eastern South Zone					
Springfield	1,595	1,716	1,828	1,947	1,995
St. Clements	1,165	1,246	1,295	1,340	1,400
Stonewall/Teulon	2,653	2,770	2,826	2,904	2,981
Wpg Beach/St. Andrews	2,384	2,534	2,591	2,694	2,836
Interlake-Eastern West Zone					
Arborg/Riverton	768	796	823	840	845
Gimli	1,783	1,830	1,862	1,906	1,951
St. Laurent	838	864	861	883	876
R.H.A. Total	19,760	20,571	21,163	21,775	22,293

Note: Manitoba Health Districts are defined by the RHAs, and are subject to change over time. For comparability, all populations have been tabulated using current district definitions, even if different definitions were in use during that population's year.

Manitoba Health, Healthy Living and Seniors Population Report - June 1, 2016

Interlake-Eastern Health Region

Municipality	Gender	Under 1	1 - 4	5 - 9	10 - 14	15 - 19	20 - 24	25 - 29	30 - 34	35 - 39	40 - 44	45 - 49	50 - 54	55 - 59	60 - 64	65 - 69	70 - 74	75 +	Total
Alexander RM																			
	F	16	36	38	42	33	38	37	34	20	28	45	75	95	104	86	53	67	847
	M	9	39	40	25	29	61	37	43	33	39	40	70	95	107	79	59	80	885
Arborg Town																			
	F	20	96	89	77	57	84	109	78	62	75	46	53	52	59	38	33	96	1,124
	M	28	106	94	94	93	64	85	69	69	75	53	63	49	40	42	34	59	1,117
Armstrong RM																			
	F	2	20	32	28	43	47	43	22	33	35	45	58	63	60	39	48	62	680
	M	6	34	35	40	54	45	43	31	27	43	41	63	68	73	50	49	51	753
Beausejour Town																			
	F	31	115	139	172	188	182	179	185	166	204	196	238	215	215	170	126	303	3,024
	M	39	130	161	171	226	235	187	198	206	203	221	249	219	214	170	120	204	3,153
Brokenhead RM																			
	F	19	92	85	75	81	88	95	116	97	95	89	106	121	109	70	63	92	1,493
	M	16	79	100	89	78	93	88	104	107	116	98	124	143	117	78	63	94	1,587
Coldwell RM																			
	F	5	20	35	40	26	36	31	39	25	34	34	44	52	40	46	27	66	600
	M	7	23	42	41	35	52	44	32	38	42	35	39	51	49	42	38	63	673
Dunnottar Village																			
	F	0	0	0	2	2	0	1	1	1	0	1	2	6	2	4	4	12	38
	M	0	0	0	2	2	2	1	1	1	1	3	2	3	5	4	3	9	39
Fisher RM																			
	F	23	71	105	97	111	94	91	71	64	61	78	87	101	68	68	51	110	1,351
	M	25	89	114	75	99	104	81	68	68	67	75	100	91	81	62	49	85	1,333
Gimli RM																			
	F	19	88	119	97	118	127	108	122	113	124	155	236	302	342	344	235	422	3,071
	M	10	109	98	115	115	135	129	115	114	123	133	229	255	311	329	249	372	2,941
Grahamdale RM																			
	F	13	41	54	56	63	50	58	50	23	56	48	63	81	48	46	40	60	850
	M	8	50	61	44	45	87	49	54	40	44	54	66	73	73	58	37	64	907
Lac du Bonnet RM																			
	F	0	6	11	15	24	27	14	12	20	19	31	63	49	49	60	54	93	547
	M	3	11	17	18	25	47	27	18	24	15	35	51	67	56	56	48	104	622

Manitoba Health, Healthy Living and Seniors Population Report - June 1, 2016

Interlake-Eastern Health Region

Municipality	Gender	Under 1	1 - 4	5 - 9	10 - 14	15 - 19	20 - 24	25 - 29	30 - 34	35 - 39	40 - 44	45 - 49	50 - 54	55 - 59	60 - 64	65 - 69	70 - 74	75 +	Total
Lac du Bonnet Town																			
	F	18	40	66	71	73	62	59	67	64	71	99	114	160	220	157	119	134	1,594
	M	10	47	61	67	67	64	48	57	62	76	83	122	166	199	194	129	116	1,568
Municipality of Bifrost-Riverton																			
	F	14	40	62	72	118	89	51	51	54	65	86	96	107	104	88	73	116	1,286
	M	13	40	68	102	102	111	74	75	61	67	85	117	113	112	94	74	98	1,406
Municipality of West Interlake																			
	F	18	65	81	78	77	80	90	59	69	72	76	102	90	81	96	59	159	1,352
	M	18	60	79	77	103	109	98	72	59	72	83	82	106	113	82	66	118	1,397
Pinawa LGD																			
	F	4	16	20	29	30	23	26	25	19	38	35	52	69	71	81	71	106	715
	M	4	27	20	22	37	39	41	31	27	29	31	52	61	75	71	73	123	763
Powerview-Pine Falls Town																			
	F	29	72	81	72	92	86	59	91	50	56	68	53	82	62	47	24	70	1,094
	M	15	61	93	85	84	107	54	69	64	67	57	81	72	68	44	25	56	1,102
Reynolds RM																			
	F	1	13	12	17	19	26	21	18	16	23	23	46	43	43	42	18	35	416
	M	3	17	18	21	24	31	26	28	14	26	21	52	46	48	43	33	41	492
Rockwood RM																			
	F	32	137	174	185	166	182	175	188	179	214	208	260	269	217	212	137	188	3,123
	M	26	156	203	152	179	215	222	194	199	194	208	290	286	273	192	150	170	3,309
Rosser RM																			
	F	6	24	41	34	49	30	28	33	32	29	48	53	54	48	26	33	37	605
	M	4	26	27	35	41	61	51	29	38	44	44	49	57	44	38	31	38	657
Selkirk City																			
	F	46	219	267	254	315	344	340	318	285	267	340	394	378	355	325	262	735	5,444
	M	53	224	274	257	294	366	336	291	264	269	284	332	363	325	289	185	398	4,804
Springfield RM																			
	F	88	358	429	417	451	447	386	450	484	477	519	638	575	500	382	250	320	7,171
	M	76	371	453	462	519	472	402	403	477	500	515	632	579	523	414	290	339	7,427
St Andrews RM																			
	F	69	235	350	406	447	487	360	370	384	492	599	747	682	539	455	311	358	7,291
	M	46	252	370	482	480	562	453	346	382	496	569	741	739	619	480	361	396	7,774

Manitoba Health, Healthy Living and Seniors Population Report - June 1, 2016

Interlake-Eastern Health Region

Municipality	Gender	Under 1	1 - 4	5 - 9	10 - 14	15 - 19	20 - 24	25 - 29	30 - 34	35 - 39	40 - 44	45 - 49	50 - 54	55 - 59	60 - 64	65 - 69	70 - 74	75 +	Total
St Clements RM																			
	F	28	142	215	220	260	249	185	191	246	250	341	409	384	289	296	185	206	4,096
	M	39	159	193	227	300	276	203	227	189	272	322	450	438	321	292	199	207	4,314
St Laurent RM																			
	F	6	29	34	32	30	37	33	27	31	41	46	61	66	72	53	36	46	680
	M	10	27	40	31	39	45	32	28	32	33	55	66	63	79	58	51	51	740
Stonewall Town																			
	F	36	140	188	175	198	206	197	163	183	220	222	276	231	177	138	90	266	3,106
	M	34	159	217	205	194	247	197	171	167	195	215	260	201	179	137	77	157	3,012
Teulon Town																			
	F	10	38	56	65	52	51	53	56	61	62	70	76	61	51	54	37	110	963
	M	7	46	71	63	60	62	57	51	50	57	67	56	77	58	43	35	54	914
Unorganized Territories - Interlake																			
	F	6	25	30	23	27	19	20	24	17	21	22	35	21	17	18	12	13	350
	M	6	24	26	23	31	29	18	18	20	15	24	34	26	30	17	10	19	370
Unorganized Territories - North Eastman																			
	F	22	80	96	81	69	86	79	59	61	54	67	53	99	98	70	41	48	1,163
	M	23	86	110	81	84	89	90	76	73	72	73	107	78	97	92	57	61	1,349
Victoria Beach RM																			
	F	1	3	2	4	4	2	7	3	3	0	13	18	18	15	41	15	33	182
	M	1	2	4	1	6	6	3	4	3	9	9	12	24	29	32	26	29	200
Whitemouth RM																			
	F	10	40	42	50	42	51	48	53	45	29	50	69	80	80	69	48	72	878
	M	9	30	40	43	49	56	52	48	36	49	48	71	91	96	78	47	71	914
Winnipeg Beach Town																			
	F	5	25	28	21	29	30	35	42	26	30	46	71	77	107	100	56	70	798
	M	5	22	22	38	32	33	20	24	28	39	50	61	66	103	94	54	65	756
Woodlands RM																			
	F	23	86	94	111	94	111	126	105	94	116	82	139	143	110	98	52	105	1,689
	M	23	82	104	106	102	136	119	109	106	110	95	149	136	132	100	72	104	1,785
Non-FN Sub-Total(Sex)																			
	F	620	2,412	3,075	3,118	3,388	3,471	3,144	3,123	3,027	3,358	3,828	4,787	4,826	4,352	3,819	2,663	4,610	57,621
	M	576	2,588	3,255	3,294	3,628	4,041	3,367	3,084	3,078	3,459	3,726	4,872	4,902	4,649	3,854	2,794	3,896	59,063

Manitoba Health, Healthy Living and Seniors Population Report - June 1, 2016

Interlake-Eastern Health Region

Municipality	Gender	Under 1	1 - 4	5 - 9	10 - 14	15 - 19	20 - 24	25 - 29	30 - 34	35 - 39	40 - 44	45 - 49	50 - 54	55 - 59	60 - 64	65 - 69	70 - 74	75 +	Total
Berens River FN																			
	F	11	45	50	33	35	43	36	21	20	23	23	21	16	7	7	3	3	397
	M	7	36	47	41	35	42	31	25	22	22	31	21	20	11	8	3	2	404
Bloodvein FN																			
	F	9	40	41	26	41	22	32	17	11	11	22	11	9	4	2	3	2	303
	M	15	34	38	25	30	28	16	18	18	19	17	14	14	6	4	3	0	299
Brokenhead FN																			
	F	2	2	6	11	9	9	11	3	9	6	8	9	11	3	3	1	6	109
	M	1	4	12	11	13	15	5	15	8	7	12	8	14	7	4	1	0	137
Dauphin River FN																			
	F	1	1	1	0	1	2	2	1	2	0	0	3	1	0	1	0	2	18
	M	1	0	1	0	0	2	0	3	5	3	4	0	0	4	0	0	0	23
Fairford FN																			
	F	11	37	33	32	42	37	32	27	21	18	30	23	16	16	10	11	8	404
	M	10	36	44	24	26	40	43	27	20	28	36	25	17	11	13	6	12	418
Fisher River FN																			
	F	9	34	43	35	40	42	29	27	23	27	35	37	29	21	15	8	14	468
	M	9	42	49	37	35	46	36	33	25	32	33	33	39	22	17	16	10	514
Fort Alexander FN																			
	F	19	69	116	108	95	93	65	57	58	64	59	62	44	46	19	17	16	1,007
	M	20	71	108	109	94	91	69	72	67	53	66	77	58	36	30	11	20	1,052
Hollow Water FN																			
	F	3	19	24	22	35	25	13	11	20	15	10	15	18	11	9	1	5	256
	M	4	14	23	40	30	27	9	14	15	19	13	9	17	11	7	3	3	258
Kinonjeoshtegon FN																			
	F	2	8	5	5	7	7	8	3	2	6	4	5	1	3	1	2	1	70
	M	0	10	5	5	8	2	4	3	3	6	4	6	1	1	2	3	4	67
Lake Manitoba FN																			
	F	8	22	31	19	21	24	23	15	16	19	18	13	10	11	8	3	3	264
	M	4	27	40	34	26	29	12	16	15	26	24	15	15	9	4	5	2	303
Lake St. Martin FN																			
	F	0	5	11	3	4	6	5	3	4	2	12	3	6	0	1	4	3	72
	M	4	5	6	7	7	12	7	11	7	7	9	10	3	1	4	2	6	108

Manitoba Health, Healthy Living and Seniors Population Report - June 1, 2016

Interlake-Eastern Health Region

Municipality	Gender	Under 1	1 - 4	5 - 9	10 - 14	15 - 19	20 - 24	25 - 29	30 - 34	35 - 39	40 - 44	45 - 49	50 - 54	55 - 59	60 - 64	65 - 69	70 - 74	75 +	Total
Little Black River FN																			
	F	4	14	18	16	8	10	10	6	6	7	13	7	4	4	4	1	1	141
	M	2	11	16	11	11	8	8	10	7	8	7	7	3	7	4	2	2	131
Little Grand Rapids FN																			
	F	10	40	44	32	34	29	37	21	22	21	30	18	11	6	2	1	1	359
	M	11	35	56	49	31	40	32	21	20	17	30	28	14	8	6	2	2	402
Little Saskatchewan FN																			
	F	4	11	9	7	8	11	13	8	4	9	4	13	7	6	2	0	4	120
	M	4	11	10	11	11	15	9	11	11	13	8	5	6	3	4	1	1	134
Pauiingassi FN																			
	F	5	26	17	14	15	25	12	14	8	7	16	10	5	1	4	2	3	184
	M	8	18	17	21	23	22	20	7	11	16	10	8	6	5	2	2	2	198
Peguis FN																			
	F	23	83	126	81	85	71	80	65	59	60	87	79	68	49	28	21	45	1,110
	M	13	81	137	97	96	96	104	84	61	60	49	96	81	46	36	22	23	1,182
Poplar River FN																			
	F	6	31	33	22	16	24	14	15	8	13	10	17	13	6	6	3	6	243
	M	7	16	30	32	26	20	27	16	4	11	19	12	15	16	7	5	3	266
FN Sub-Total(Sex)																			
	F	127	487	608	468	504	478	422	314	293	308	381	346	269	194	122	81	123	5,525
	M	120	451	639	554	506	538	432	386	319	347	372	374	323	204	152	87	92	5,896
RHA Sub-Total (Sex)																			
	F	747	2,899	3,683	3,586	3,892	3,949	3,566	3,437	3,320	3,666	4,209	5,133	5,095	4,546	3,941	2,744	4,733	63,146
	M	696	3,039	3,894	3,848	4,134	4,579	3,799	3,470	3,397	3,806	4,098	5,246	5,225	4,853	4,006	2,881	3,988	64,959
RHA Total																			
		1,443	5,938	7,577	7,434	8,026	8,528	7,365	6,907	6,717	7,472	8,307	10,379	10,320	9,399	7,947	5,625	8,721	128,105

Interlake-Eastern Health Region

Municipality	2012	2013	2014	2015	2016
Alexander RM	1,767	1,749	1,724	1,725	1,732
Arborg Town	1,924	2,081	2,107	2,196	2,241
Armstrong RM	1,497	1,499	1,472	1,430	1,433
Beausejour Town	5,754	5,804	5,945	6,080	6,177
Brokenhead RM	2,908	3,024	3,094	3,068	3,080
Coldwell RM	1,290	1,313	1,278	1,285	1,273
Dunnottar Village	108	97	87	82	77
Fisher RM	2,565	2,575	2,641	2,639	2,684
Gimli RM	5,883	5,922	5,982	5,961	6,012
Grahamdale RM	1,969	1,918	1,852	1,781	1,757
Lac du Bonnet RM	1,387	1,320	1,257	1,197	1,169
Lac du Bonnet Town	2,949	2,991	3,029	3,064	3,162
Municipality of Bifrost-Riverton	2,975	2,888	2,799	2,750	2,692
Municipality of West Interlake	2,726	2,716	2,693	2,695	2,749
Pinawa LGD	1,488	1,494	1,519	1,485	1,478
Powerview-Pine Falls Town	2,111	2,140	2,225	2,201	2,196
Reynolds RM	969	964	967	924	908
Rockwood RM	6,628	6,568	6,588	6,551	6,432
Rosser RM	1,286	1,290	1,279	1,250	1,262
Selkirk City	9,819	9,884	10,013	10,132	10,248
Springfield RM	13,581	13,808	14,066	14,364	14,598
St Andrews RM	14,896	14,981	14,964	15,037	15,065
St Clements RM	7,962	8,128	8,251	8,299	8,410
St Laurent RM	1,386	1,381	1,369	1,395	1,420
Stonewall Town	5,685	5,818	5,939	6,016	6,118
Teulon Town	1,772	1,787	1,833	1,848	1,877
Unorganized Territories - Interlake	658	688	702	729	720
Unorganized Territories - North Eastman	2,541	2,526	2,549	2,534	2,512
Victoria Beach RM	360	378	379	373	382

Interlake-Eastern Health Region

Municipality	2012	2013	2014	2015	2016
Whitemouth RM	1,724	1,725	1,769	1,801	1,792
Winnipeg Beach Town	1,464	1,484	1,536	1,553	1,554
Woodlands RM	3,389	3,412	3,426	3,474	3,474
Non-FN Sub-Total	113,421	114,353	115,334	115,919	116,684
Berens River FN	693	732	736	767	801
Bloodvein FN	543	581	572	594	602
Brokenhead FN	224	224	241	240	246
Dauphin River FN	59	59	46	41	41
Fairford FN	799	866	844	822	822
Fisher River FN	920	942	955	962	982
Fort Alexander FN	2,082	2,100	2,102	2,089	2,059
Hollow Water FN	536	532	519	511	514
Kinonjeoshtegon FN	144	143	121	134	137
Lake Manitoba FN	484	494	507	537	567
Lake St. Martin FN	517	387	285	207	180
Little Black River FN	278	281	275	286	272
Little Grand Rapids FN	737	752	758	763	761
Little Saskatchewan FN	280	274	244	243	254
Pauingassi FN	342	364	371	377	382
Peguis FN	2,154	2,245	2,250	2,271	2,292
Poplar River FN	507	516	514	510	509
FN Sub-Total	11,299	11,492	11,340	11,354	11,421
R.H.A. Total	124,720	125,845	126,674	127,273	128,105

Interlake-Eastern Health Region**Age Group 65+**

Municipality	2012	2013	2014	2015	2016
Alexander RM	400	409	412	418	424
Arborg Town	271	294	306	309	302
Armstrong RM	317	317	315	304	299
Beausejour Town	999	1,016	1,059	1,087	1,093
Brokenhead RM	439	451	448	462	460
Coldwell RM	265	281	281	291	282
Dunnottar Village	58	49	44	39	36
Fisher RM	420	423	418	421	425
Gimli RM	1,783	1,830	1,862	1,906	1,951
Grahamdale RM	322	319	320	316	305
Lac du Bonnet RM	442	434	430	426	415
Lac du Bonnet Town	678	723	774	796	849
Municipality of Bifrost-Riverton	497	502	517	531	543
Municipality of West Interlake	545	551	556	571	580
Pinawa LGD	479	496	512	526	525
Powerview-Pine Falls Town	244	266	270	270	266
Reynolds RM	191	188	197	200	212
Rockwood RM	939	961	988	1,025	1,049
Rosser RM	178	185	191	200	203
Selkirk City	1,937	1,992	2,080	2,148	2,194
Springfield RM	1,595	1,716	1,828	1,947	1,995
St Andrews RM	1,982	2,116	2,152	2,244	2,361
St Clements RM	1,153	1,231	1,279	1,324	1,385
St Laurent RM	256	266	265	288	295
Stonewall Town	738	798	828	852	865
Teulon Town	313	320	315	313	333
Unorganized Territories - Interlake	80	85	87	91	89
Unorganized Territories - North Eastman	329	347	348	352	369
Victoria Beach RM	129	137	159	167	176

Interlake-Eastern Health Region

Age Group 65+

Municipality	2012	2013	2014	2015	2016
Whitemouth RM	349	364	378	382	385
Winnipeg Beach Town	344	369	395	411	439
Woodlands RM	485	506	504	514	531
Non-FN Sub-Total	19,157	19,942	20,518	21,131	21,636
Berens River FN	22	20	25	23	26
Bloodvein FN	15	14	16	16	14
Brokenhead FN	12	15	16	16	15
Dauphin River FN	7	8	7	4	3
Fairford FN	53	54	56	59	60
Fisher River FN	66	68	71	72	80
Fort Alexander FN	101	113	114	112	113
Hollow Water FN	27	25	29	27	28
Kinonjeoshtegon FN	13	13	13	13	13
Lake Manitoba FN	17	21	22	26	25
Lake St. Martin FN	28	27	25	22	20
Little Black River FN	11	9	12	15	14
Little Grand Rapids FN	26	21	17	16	14
Little Saskatchewan FN	9	11	10	9	12
Pauingassi FN	13	12	12	12	15
Peguis FN	159	172	173	175	175
Poplar River FN	24	26	27	27	30
FN Sub-Total	603	629	645	644	657
R.H.A. Total	19,760	20,571	21,163	21,775	22,293

This page intentionally left blank

Population of Northern RHA

June 1, 2016

Manitoba RHAs -- Northern



Manitoba Health, Healthy Living and Seniors Population Report - June 1, 2016

Northern Health Region

District	Gender	Under 1	1 - 4	5 - 9	10 - 14	15 - 19	20 - 24	25 - 29	30 - 34	35 - 39	40 - 44	45 - 49	50 - 54	55 - 59	60 - 64	65 - 69	70 - 74	75 +	Total
Northern Direct Service Zone																			
Bay Line																			
	F	5	39	58	48	52	64	35	27	38	27	31	35	41	31	15	20	19	585
	M	16	43	63	47	57	56	41	41	42	36	34	45	38	35	22	19	20	655
Flin Flon/Snow Lake/Cranberry/Sheridon																			
	F	48	160	221	179	214	266	228	235	215	227	194	343	367	290	212	142	271	3,812
	M	40	179	209	218	222	251	235	229	223	236	228	293	429	346	269	141	202	3,950
Gillam/Fox Lake CN																			
	F	13	57	88	62	53	59	59	73	61	47	44	41	40	26	17	4	8	752
	M	12	52	83	62	57	65	61	66	62	53	48	47	51	29	17	6	9	780
Lynn/MC FN/Leaf/O-P FN (SIL)/PN FN (Granville)																			
	F	37	114	121	110	103	117	85	83	60	56	50	58	49	39	31	19	26	1,158
	M	32	132	150	108	122	97	93	69	56	76	63	78	61	46	33	20	23	1,259
The Pas/OCN/Kelsey																			
	F	90	371	468	418	427	409	455	367	351	350	368	331	368	320	227	139	212	5,671
	M	95	364	471	420	438	443	393	340	325	365	324	348	367	316	261	164	187	5,621
Thompson/Mystery Lake																			
	F	131	499	680	500	505	594	647	646	585	512	510	512	341	261	206	124	127	7,380
	M	136	520	666	513	537	564	661	600	515	467	566	570	428	301	221	127	101	7,493
	F	324	1,240	1,636	1,317	1,354	1,509	1,509	1,431	1,310	1,219	1,197	1,320	1,206	967	708	448	663	19,358
	M	331	1,290	1,642	1,368	1,433	1,476	1,484	1,345	1,223	1,233	1,263	1,381	1,374	1,073	823	477	542	19,758

Northern Island Lake Zone

Island Lake																			
	F	111	505	607	489	373	370	362	289	238	199	193	146	141	92	74	41	42	4,272
	M	129	524	647	538	412	371	347	296	274	227	219	172	136	107	68	48	33	4,548
	F	111	505	607	489	373	370	362	289	238	199	193	146	141	92	74	41	42	4,272
	M	129	524	647	538	412	371	347	296	274	227	219	172	136	107	68	48	33	4,548

Manitoba Health, Healthy Living and Seniors Population Report - June 1, 2016

Northern Health Region

District	Gender	Under 1	1 - 4	5 - 9	10 - 14	15 - 19	20 - 24	25 - 29	30 - 34	35 - 39	40 - 44	45 - 49	50 - 54	55 - 59	60 - 64	65 - 69	70 - 74	75 +	Total
Northern Non-Direct Service Zone																			
Bunibonabee/Oxford House/Manto Sipi/God's River/God's Lake																			
	F	54	213	257	207	188	195	176	134	119	109	75	101	74	45	27	35	54	2,063
	M	70	250	279	209	194	198	168	132	119	128	117	88	70	56	33	25	39	2,175
Cross Lake/Pimickamak CN																			
	F	59	249	343	245	210	238	209	167	120	135	143	137	91	62	50	20	43	2,521
	M	89	259	339	242	239	241	225	132	132	140	110	129	107	63	47	27	38	2,559
GR/Misipawistik CN/ML/Mosakahiken CN/Eas/Chemawawin FN																			
	F	62	224	249	198	214	176	153	102	97	105	125	108	83	45	36	33	24	2,034
	M	51	208	278	227	191	180	143	124	76	117	127	92	89	59	40	33	31	2,066
Nelson House/Nisichawayasihk Cree Nation																			
	F	37	136	140	136	130	141	112	66	65	78	81	49	42	29	21	18	21	1,302
	M	37	135	171	144	154	160	92	71	69	69	80	57	55	35	29	12	14	1,384
Norway House/Norway House CN																			
	F	76	264	311	246	220	236	235	198	161	156	163	134	139	85	50	40	42	2,756
	M	68	280	322	264	219	228	247	186	158	179	172	164	111	89	58	38	27	2,810
Pukatawagan/Mathias Colomb CN																			
	F	20	98	130	91	97	83	80	50	55	37	45	34	35	15	13	3	15	901
	M	30	118	126	101	106	90	74	52	43	40	48	35	36	20	8	7	7	941
Sayisi Dene/Tadoule/Barren Lands/Brochet/Northlands/Lac Br																			
	F	17	65	80	65	63	71	63	57	44	39	47	38	26	24	18	16	15	748
	M	19	76	74	56	82	82	76	54	47	58	47	45	35	25	15	13	19	823
Shamattawa FN/York Factory FN/Tataskweyak CN/Split Lake																			
	F	39	175	238	180	151	150	115	85	85	103	100	65	68	41	30	22	19	1,666
	M	51	182	216	188	138	157	114	95	101	108	115	82	73	38	34	20	27	1,739
	F	364	1,424	1,748	1,368	1,273	1,290	1,143	859	746	762	779	666	558	346	245	187	233	13,991
	M	415	1,508	1,805	1,431	1,323	1,336	1,139	846	745	839	816	692	576	385	264	175	202	14,497
RHA Sub-Total (Sex)																			
	F	799	3,169	3,991	3,174	3,000	3,169	3,014	2,579	2,294	2,180	2,169	2,132	1,905	1,405	1,027	676	938	37,621
	M	875	3,322	4,094	3,337	3,168	3,183	2,970	2,487	2,242	2,299	2,298	2,245	2,086	1,565	1,155	700	777	38,803
RHA Total																			
		1,674	6,491	8,085	6,511	6,168	6,352	5,984	5,066	4,536	4,479	4,467	4,377	3,991	2,970	2,182	1,376	1,715	76,424

Northern Health Region

District	2012	2013	2014	2015	2016
Northern Direct Service Zone					
Bay Line	1,342	1,325	1,303	1,263	1,240
Flin Flon/Snow Lake/Cranberry/Sherridon	7,833	7,707	7,695	7,775	7,762
Gillam/Fox Lake CN	1,615	1,671	1,648	1,582	1,532
Lynn/MC FN/Leaf/O-P FN (SIL)/PN FN (Granville)	2,294	2,358	2,411	2,442	2,417
The Pas/OCN/Kelsey	11,297	11,348	11,310	11,290	11,292
Thompson/Mystery Lake	14,741	14,506	14,463	14,670	14,873
Northern Island Lake Zone					
Island Lake	8,059	8,347	8,630	8,762	8,820
Northern Non-Direct Service Zone					
Bunibonibee/Oxford House/Manto Sipi/God's River/God's Lake	3,962	4,109	4,167	4,198	4,238
Cross Lake/Pimicikamak CN	4,598	4,597	4,771	4,901	5,080
GR/Misipawistik CN/ML/Mosakahiken CN/Eas/Chemawawin FN	3,858	3,966	4,031	4,060	4,100
Nelson House/Nisichawayasihk Cree Nation	2,565	2,605	2,655	2,649	2,686
Norway House/Norway House CN	5,374	5,416	5,455	5,549	5,566
Pukatawagan/Mathias Colomb CN	1,778	1,833	1,832	1,838	1,842
Sayisi Dene/Tadoules/Barren Lands/Brochet/Northlands/Lac Br	1,535	1,576	1,591	1,569	1,571
Shamattawa FN/York Factory FN/Tataskweyak CN/Split Lake	3,324	3,367	3,387	3,399	3,405
R.H.A. Total	74,175	74,731	75,349	75,947	76,424

Note: Manitoba Health Districts are defined by the RHAs, and are subject to change over time. For comparability, all populations have been tabulated using current district definitions, even if different definitions were in use during that population's year.

Northern Health Region	Age Group 65+				
	District	2012	2013	2014	2015
Northern Direct Service Zone					
Bay Line	106	114	110	108	115
Flin Flon/Snow Lake/Cranberry/Sherridon	1,076	1,129	1,159	1,198	1,237
Gillam/Fox Lake CN	55	57	57	61	61
Lynn/MC FN/Leaf/O-P FN (SIL)/PN FN (Granville)	138	150	152	160	152
The Pas/OCN/Kelsey	1,003	1,055	1,100	1,143	1,190
Thompson/Mystery Lake	700	758	821	866	906
Northern Island Lake Zone					
Island Lake	254	274	280	298	306
Northern Non-Direct Service Zone					
Bunibonibee/Oxford House/Manto Sipi/God's River/God's Lake	208	216	215	213	213
Cross Lake/Pimicikamak CN	188	182	196	205	225
GR/Misipawistik CN/ML/Mosakahiken CN/Eas/Chemawawin FN	185	183	191	189	197
Nelson House/Nisichawayasihk Cree Nation	103	107	111	107	115
Norway House/Norway House CN	233	234	245	245	255
Pukatawagan/Mathias Colomb CN	58	55	56	50	53
Sayisi Dene/Tadoules/Barren Lands/Brochet/Northlands/Lac Br	79	85	92	98	96
Shamattawa FN/York Factory FN/Tataskweyak CN/Split Lake	136	138	141	148	152
R.H.A. Total	4,522	4,737	4,926	5,089	5,273

Note: Manitoba Health Districts are defined by the RHAs, and are subject to change over time. For comparability, all populations have been tabulated using current district definitions, even if different definitions were in use during that population's year.

Manitoba Health, Healthy Living and Seniors Population Report - June 1, 2016

Northern Health Region

Municipality	Gender	Under 1	1 - 4	5 - 9	10 - 14	15 - 19	20 - 24	25 - 29	30 - 34	35 - 39	40 - 44	45 - 49	50 - 54	55 - 59	60 - 64	65 - 69	70 - 74	75 +	Total
Flin Flon City																			
	F	34	115	172	145	158	198	186	180	171	182	131	251	287	240	149	102	228	2,929
	M	28	133	146	169	163	181	182	169	171	173	168	212	328	278	180	101	154	2,936
Gillam Town																			
	F	7	50	81	52	42	48	49	62	53	37	34	37	30	12	11	2	3	610
	M	8	44	65	52	45	51	51	57	52	47	40	40	41	25	12	2	5	637
Grand Rapids Town																			
	F	15	40	31	37	34	32	25	18	20	15	24	26	23	14	11	13	7	385
	M	8	43	38	19	29	29	24	22	10	18	28	22	13	17	11	13	8	352
Kelsey RM																			
	F	16	72	90	73	77	89	64	57	52	58	72	79	107	106	65	51	50	1,178
	M	9	75	90	85	85	117	81	78	70	67	69	85	93	115	92	56	61	1,328
Leaf Rapids Town																			
	F	6	30	32	30	21	30	20	18	14	16	12	13	13	15	11	5	3	289
	M	7	30	35	30	31	23	22	15	13	15	9	15	14	17	8	9	7	300
Lynn Lake Town																			
	F	16	36	37	29	35	38	37	31	14	16	21	25	21	10	8	8	18	400
	M	11	47	51	24	30	33	34	28	18	19	28	32	26	17	12	7	12	429
Mystery Lake LGD																			
	F	0	0	0	0	0	0	0	0	0	1	0	0	0	0	0	0	0	1
	M	0	0	0	0	0	0	0	0	1	0	0	0	0	0	0	0	0	1
Snow Lake Town																			
	F	9	21	23	16	28	37	26	33	26	19	25	52	44	19	35	21	29	463
	M	8	27	25	18	22	35	36	36	25	27	33	36	63	28	48	18	26	511
The Pas City																			
	F	58	240	288	249	272	264	307	264	248	255	256	229	253	208	159	90	161	3,801
	M	65	219	302	254	290	279	251	227	222	265	210	260	266	194	180	110	135	3,729
Thompson City																			
	F	131	499	680	500	505	594	647	646	585	511	509	512	341	261	206	124	127	7,378
	M	136	520	666	513	537	564	661	600	514	467	566	570	428	301	221	127	101	7,492
Unorganized Territories - Burntwood																			
	F	77	376	472	359	319	325	300	249	206	195	173	171	146	90	64	41	49	3,612
	M	104	389	457	349	317	295	288	226	224	239	228	187	148	106	73	37	37	3,704

Manitoba Health, Healthy Living and Seniors Population Report - June 1, 2016

Northern Health Region

Municipality	Gender	Under 1	1 - 4	5 - 9	10 - 14	15 - 19	20 - 24	25 - 29	30 - 34	35 - 39	40 - 44	45 - 49	50 - 54	55 - 59	60 - 64	65 - 69	70 - 74	75 +	Total
Unorganized Territories - Norman																			
	F	27	125	118	96	146	114	89	68	70	75	65	64	60	30	31	18	13	1,209
	M	35	107	165	135	145	116	106	80	78	98	75	68	56	47	34	23	23	1,391
Non-FN Sub-Total(Sex)																			
	F	396	1,604	2,024	1,586	1,637	1,769	1,750	1,626	1,459	1,380	1,322	1,459	1,325	1,005	750	475	688	22,255
	M	419	1,634	2,040	1,648	1,694	1,723	1,736	1,538	1,398	1,435	1,454	1,527	1,476	1,145	871	503	569	22,810
Barren Lands FN																			
	F	4	15	12	11	19	14	14	8	11	7	8	4	3	2	1	5	3	141
	M	5	19	18	10	22	14	10	6	6	10	10	6	5	6	2	0	9	158
Chemawawin FN																			
	F	12	42	67	41	46	32	35	19	11	20	27	19	8	4	3	4	2	392
	M	8	39	56	54	41	46	22	19	10	21	27	14	21	3	2	7	6	396
Churchill FN																			
	F	2	9	9	4	7	8	9	14	4	4	9	8	8	9	5	3	3	115
	M	1	16	11	12	10	17	19	8	9	7	7	7	8	7	3	4	3	149
Cross Lake FN																			
	F	43	191	268	179	150	192	154	120	86	103	114	100	68	51	38	15	33	1,905
	M	72	197	260	186	187	184	170	95	91	96	80	96	82	49	34	21	31	1,931
Fox Lake FN																			
	F	4	4	5	9	11	9	6	7	5	10	8	4	7	11	5	2	5	112
	M	2	5	14	6	9	9	5	8	7	6	8	7	6	4	4	4	3	107
Garden Hill FN																			
	F	35	151	160	143	124	121	96	81	59	59	52	43	43	36	27	12	13	1,255
	M	36	155	166	157	135	126	106	95	61	78	72	60	58	28	28	18	11	1,390
Gods Lake FN																			
	F	17	48	56	40	37	53	47	30	26	23	14	31	18	10	2	13	9	474
	M	19	57	67	47	39	52	51	36	25	22	27	27	22	21	6	9	13	540
Gods River FN																			
	F	4	40	41	40	13	29	30	21	13	14	11	13	5	4	2	4	3	287
	M	8	39	47	23	21	21	21	16	17	17	12	12	9	4	2	0	2	271
Inuit & OOP FN																			
	F	0	0	0	0	0	0	0	0	0	0	1	0	0	0	0	0	0	1
	M	0	0	0	0	0	0	0	0	0	0	0	0	0	0	1	0	0	1
Marcel Colomb FN																			

Manitoba Health, Healthy Living and Seniors Population Report - June 1, 2016

Northern Health Region

Municipality	Gender	Under 1	1 - 4	5 - 9	10 - 14	15 - 19	20 - 24	25 - 29	30 - 34	35 - 39	40 - 44	45 - 49	50 - 54	55 - 59	60 - 64	65 - 69	70 - 74	75 +	Total
Mathias Colomb FN																			
	F	17	80	111	78	71	61	62	38	42	26	35	27	30	14	5	2	15	714
	M	22	95	100	90	71	69	53	44	24	22	38	26	32	18	7	4	6	721
Misipawistik Cree Nation																			
	F	6	29	35	19	19	18	22	12	15	11	14	13	13	6	3	1	6	242
	M	6	26	41	32	15	25	15	15	5	7	19	12	17	7	5	0	1	248
Moose Lake FN																			
	F	8	27	44	29	28	28	18	13	9	14	17	14	7	5	2	4	3	270
	M	9	30	37	28	31	18	17	16	12	16	5	9	5	8	3	3	2	249
Nelson House FN																			
	F	35	95	106	108	99	104	86	47	52	62	64	38	33	17	16	16	16	994
	M	23	103	136	115	117	117	61	45	51	42	62	42	43	25	22	7	12	1,023
Northlands FN																			
	F	9	21	32	31	22	36	25	20	16	15	23	17	10	6	5	6	6	300
	M	7	27	27	19	23	32	26	31	16	21	15	18	6	6	4	6	4	288
Norway House FN																			
	F	63	225	260	212	181	206	200	157	128	125	139	114	111	70	44	32	32	2,299
	M	60	236	276	214	188	191	205	153	132	144	129	133	91	70	50	34	26	2,332
Opaskwayak Cree Nation																			
	F	19	75	106	112	94	79	94	61	66	55	72	51	36	35	29	16	15	1,015
	M	23	85	107	103	89	74	71	49	53	58	64	40	40	38	21	18	10	943
O-Pipon-Na-Piwin Cree Nation																			
	F	8	31	35	39	34	30	18	25	25	15	12	11	10	10	8	4	5	320
	M	11	44	49	38	39	33	25	18	15	28	18	19	10	9	8	2	1	367
Oxford House FN																			
	F	23	87	115	94	98	69	73	69	59	45	31	40	34	23	17	15	37	929
	M	28	115	119	106	91	95	68	60	63	63	55	37	31	24	18	14	22	1,009
Red Sucker Lake FN																			
	F	10	28	46	39	37	33	20	14	22	25	22	12	13	5	10	4	6	346
	M	6	32	40	37	35	31	20	13	32	31	23	9	7	9	7	4	2	338
Shamattawa FN																			
	F	11	53	69	44	38	45	33	18	24	32	24	9	17	11	8	4	5	445
	M	21	48	65	40	34	45	30	26	26	24	27	20	11	7	5	7	2	438

Manitoba Health, Healthy Living and Seniors Population Report - June 1, 2016

Northern Health Region

Municipality	Gender	Under 1	1 - 4	5 - 9	10 - 14	15 - 19	20 - 24	25 - 29	30 - 34	35 - 39	40 - 44	45 - 49	50 - 54	55 - 59	60 - 64	65 - 69	70 - 74	75 +	Total
Split Lake FN																			
	F	25	74	110	93	60	57	46	38	43	45	50	28	34	18	11	10	9	751
	M	18	87	107	92	72	72	52	41	45	48	46	38	32	17	17	12	18	814
St. Theresa Point FN																			
	F	26	160	177	151	105	125	121	95	67	57	68	50	52	35	21	17	13	1,340
	M	47	170	215	181	137	120	119	102	90	56	69	56	46	42	23	18	14	1,505
War Lake FN																			
	F	2	3	2	1	0	2	3	4	3	0	2	0	3	3	1	0	0	29
	M	2	3	4	4	3	5	5	1	3	0	0	0	4	0	1	0	1	36
Wasagamack FN																			
	F	18	68	91	62	52	39	45	36	43	24	23	19	13	11	8	8	8	568
	M	21	51	81	75	54	56	57	50	43	30	24	25	15	14	6	5	6	613
York Factory FN																			
	F	2	9	10	9	18	10	7	6	6	9	7	8	4	4	6	4	3	122
	M	1	9	11	20	11	8	6	2	8	17	7	5	9	4	5	0	3	126
FN Sub-Total(Sex)																			
	F	403	1,565	1,967	1,588	1,363	1,400	1,264	953	835	800	847	673	580	400	277	201	250	15,366
	M	456	1,688	2,054	1,689	1,474	1,460	1,234	949	844	864	844	718	610	420	284	197	208	15,993
RHA Sub-Total (Sex)																			
	F	799	3,169	3,991	3,174	3,000	3,169	3,014	2,579	2,294	2,180	2,169	2,132	1,905	1,405	1,027	676	938	37,621
	M	875	3,322	4,094	3,337	3,168	3,183	2,970	2,487	2,242	2,299	2,298	2,245	2,086	1,565	1,155	700	777	38,803
RHA Total																			
		1,674	6,491	8,085	6,511	6,168	6,352	5,984	5,066	4,536	4,479	4,467	4,377	3,991	2,970	2,182	1,376	1,715	76,424

Northern Health Region

Municipality	2012	2013	2014	2015	2016
Flin Flon City	5,962	5,855	5,840	5,885	5,865
Gillam Town	1,336	1,367	1,339	1,305	1,247
Grand Rapids Town	748	746	732	728	737
Kelsey RM	2,572	2,541	2,520	2,530	2,506
Leaf Rapids Town	571	607	629	624	589
Lynn Lake Town	704	730	789	822	829
Mystery Lake LGD	3	2	2	2	2
Snow Lake Town	919	938	925	963	974
The Pas City	7,615	7,633	7,598	7,507	7,530
Thompson City	14,738	14,503	14,459	14,668	14,870
Unorganized Territories - Burntwood	6,919	7,097	7,203	7,263	7,316
Unorganized Territories - Norman	2,513	2,564	2,549	2,560	2,600
Non-FN Sub-Total	44,600	44,583	44,585	44,857	45,065
Barren Lands FN	287	299	303	293	299
Chemawawin FN	721	727	761	773	788
Churchill FN	246	256	267	269	264
Cross Lake FN	3,470	3,472	3,614	3,717	3,836
Fox Lake FN	206	229	235	213	219
Garden Hill FN	2,524	2,581	2,651	2,660	2,645
Gods Lake FN	923	960	982	986	1,014
Gods River FN	500	510	532	553	558
Inuit & OOP FN	-	1	2	-	1
Marcel Colomb FN	-	-	1	1	1
Mathias Colomb FN	1,391	1,431	1,456	1,454	1,435
Misipawistik Cree Nation	463	478	498	489	490
Moose Lake FN	482	500	499	536	519
Nelson House FN	1,961	1,993	2,010	1,997	2,017
Northlands FN	550	575	579	579	588
Norway House FN	4,425	4,483	4,532	4,603	4,631

Northern Health Region

Municipality	2012	2013	2014	2015	2016
Opaskwayak Cree Nation	1,821	1,865	1,894	1,938	1,958
O-Pipon-Na-Piwin Cree Nation	684	683	672	684	687
Oxford House FN	1,886	1,909	1,918	1,917	1,938
Red Sucker Lake FN	651	663	667	663	684
Shamattawa FN	881	887	869	896	883
Split Lake FN	1,524	1,551	1,574	1,550	1,565
St. Theresa Point FN	2,553	2,616	2,730	2,781	2,845
War Lake FN	69	69	68	64	65
Wasagamack FN	1,117	1,180	1,210	1,227	1,181
York Factory FN	240	230	240	247	248
FN Sub-Total	29,575	30,148	30,764	31,090	31,359
R.H.A. Total	74,175	74,731	75,349	75,947	76,424

Northern Health Region

Age Group 65+

Municipality	2012	2013	2014	2015	2016
Flin Flon City	811	839	855	881	914
Gillam Town	31	31	29	35	35
Grand Rapids Town	60	58	57	59	63
Kelsey RM	308	340	352	357	375
Leaf Rapids Town	34	39	39	45	43
Lynn Lake Town	70	72	73	72	65
Snow Lake Town	150	164	172	178	177
The Pas City	705	732	762	802	835
Thompson City	700	758	821	866	906
Unorganized Territories - Burntwood	262	277	283	289	301
Unorganized Territories - Norman	141	142	139	141	142
Non-FN Sub-Total	3,272	3,452	3,582	3,725	3,856
Barren Lands FN	18	18	18	19	20
Chemawawin FN	24	21	24	23	24
Churchill FN	22	23	23	25	21
Cross Lake FN	146	144	150	159	172
Fox Lake FN	20	21	22	23	23
Garden Hill FN	82	88	96	107	109
Gods Lake FN	60	60	57	53	52
Gods River FN	14	14	15	13	13
Marcel Colomb FN	-	-	-	-	1
Mathias Colomb FN	46	43	45	39	39
Misipawistik Cree Nation	10	12	17	16	16
Moose Lake FN	15	15	17	16	17
Nelson House FN	84	83	85	84	89
Northlands FN	20	26	30	30	31
Norway House FN	189	190	207	204	218
Opaskwayak Cree Nation	86	90	100	101	109
O-Pipon-Na-Piwin Cree Nation	22	29	29	31	28

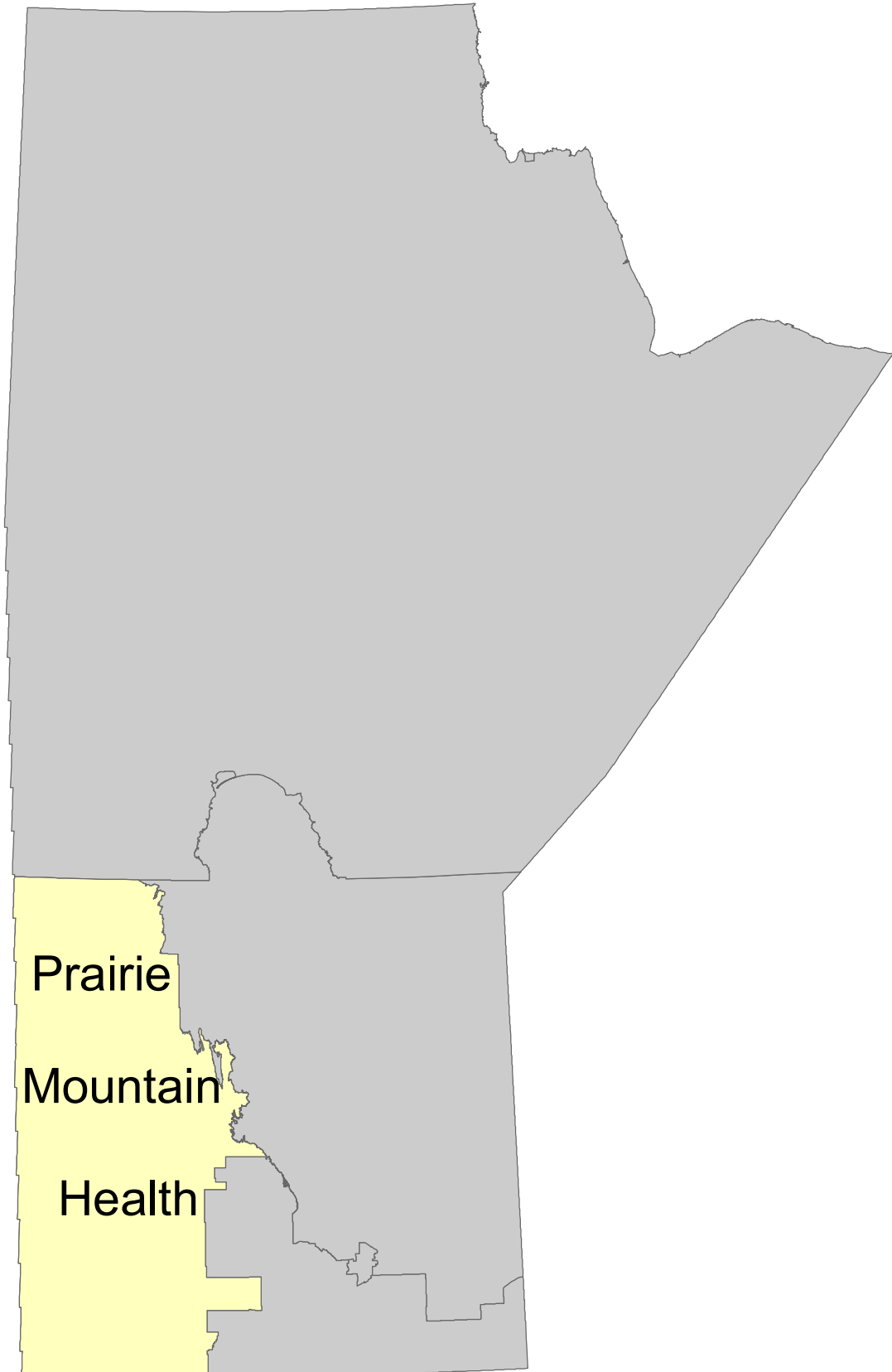
Northern Health Region**Age Group 65+**

Municipality	2012	2013	2014	2015	2016
Oxford House FN	116	122	122	123	123
Red Sucker Lake FN	30	34	33	33	33
Shamattawa FN	26	27	28	27	31
Split Lake FN	74	75	75	78	77
St. Theresa Point FN	80	87	90	95	106
War Lake FN	4	5	6	3	3
Wasagamack FN	43	43	40	44	41
York Factory FN	19	15	15	18	21
FN Sub-Total	1,250	1,285	1,344	1,364	1,417
R.H.A. Total	4,522	4,737	4,926	5,089	5,273

Population of Prairie Mountain Health

June 1, 2016

Manitoba RHAs -- Prairie Mountain Health



Manitoba Health, Healthy Living and Seniors Population Report - June 1, 2016

Prairie Mountain Health Region

District	Gender	Under 1	1 - 4	5 - 9	10 - 14	15 - 19	20 - 24	25 - 29	30 - 34	35 - 39	40 - 44	45 - 49	50 - 54	55 - 59	60 - 64	65 - 69	70 - 74	75 +	Total
PMH Brandon Zone																			
Brandon Downtown																			
	F	85	359	342	356	354	517	566	511	456	415	355	330	320	246	214	178	596	6,200
	M	88	350	366	346	369	496	534	569	499	426	335	367	311	238	195	117	276	5,882
Brandon East End																			
	F	52	202	257	191	185	275	333	286	249	207	168	206	197	127	139	108	448	3,630
	M	47	224	239	223	203	260	273	334	269	222	199	196	204	127	101	81	224	3,426
Brandon North Hill																			
	F	42	172	228	229	202	265	298	275	267	225	199	281	274	272	254	167	269	3,919
	M	57	207	212	213	184	247	263	249	239	228	229	241	254	214	192	160	237	3,626
Brandon South End																			
	F	71	280	343	271	296	320	429	416	384	361	320	359	352	292	280	176	331	5,281
	M	79	329	359	320	342	362	377	385	381	364	314	326	302	286	225	148	255	5,154
Brandon West End																			
	F	97	391	516	500	497	611	650	577	616	567	457	541	499	450	412	294	673	8,348
	M	90	393	545	496	477	522	549	531	568	581	451	473	451	440	371	233	465	7,636
	F	347	1,404	1,686	1,547	1,534	1,988	2,276	2,065	1,972	1,775	1,499	1,717	1,642	1,387	1,299	923	2,317	27,378
	M	361	1,503	1,721	1,598	1,575	1,887	1,996	2,068	1,956	1,821	1,528	1,603	1,522	1,305	1,064	739	1,457	25,724

Manitoba Health, Healthy Living and Seniors Population Report - June 1, 2016

Prairie Mountain Health Region

District	Gender	Under 1	1 - 4	5 - 9	10 - 14	15 - 19	20 - 24	25 - 29	30 - 34	35 - 39	40 - 44	45 - 49	50 - 54	55 - 59	60 - 64	65 - 69	70 - 74	75 +	Total
PMH North Zone																			
Agassiz Mountain																			
	F	64	187	242	254	246	225	179	169	174	207	202	242	256	240	204	168	313	3,572
	M	38	194	274	231	237	230	194	188	166	186	207	226	246	243	228	178	280	3,546
Dauphin																			
	F	50	200	286	233	257	260	267	266	298	238	269	279	311	305	298	250	696	4,763
	M	57	206	269	270	269	262	237	250	262	246	233	270	273	269	245	196	402	4,216
Duck Mountain																			
	F	36	118	168	131	152	156	140	134	128	116	146	174	201	204	197	161	392	2,754
	M	27	131	173	134	156	154	142	160	121	145	130	182	187	224	202	164	285	2,717
Porcupine Mountain																			
	F	65	236	320	276	299	302	256	205	207	252	244	257	303	281	210	164	254	4,131
	M	55	252	332	346	341	328	291	217	238	242	276	272	335	304	228	191	276	4,524
Riding Mountain																			
	F	18	103	137	131	148	131	123	130	114	139	146	181	215	212	178	129	234	2,469
	M	40	85	131	126	161	166	154	129	133	144	152	193	225	241	204	167	230	2,681
Swan River																			
	F	35	124	158	152	137	184	167	156	148	140	160	211	176	163	153	149	362	2,775
	M	32	132	177	154	161	194	180	151	126	143	144	182	176	149	135	110	269	2,615
	F	268	968	1,311	1,177	1,239	1,258	1,132	1,060	1,069	1,092	1,167	1,344	1,462	1,405	1,240	1,021	2,251	20,464
	M	249	1,000	1,356	1,261	1,325	1,334	1,198	1,095	1,046	1,106	1,142	1,325	1,442	1,430	1,242	1,006	1,742	20,299

Manitoba Health, Healthy Living and Seniors Population Report - June 1, 2016

Prairie Mountain Health Region

District	Gender	Under 1	1 - 4	5 - 9	10 - 14	15 - 19	20 - 24	25 - 29	30 - 34	35 - 39	40 - 44	45 - 49	50 - 54	55 - 59	60 - 64	65 - 69	70 - 74	75 +	Total
PMH South Zone																			
Asessippi																			
	F	66	318	373	357	332	367	320	313	281	306	311	403	392	379	306	222	578	5,624
	M	66	285	387	347	384	386	366	300	303	307	309	399	438	421	310	248	427	5,683
Little Saskatchewan																			
	F	66	294	328	321	341	369	339	353	354	326	334	477	563	505	454	274	646	6,344
	M	74	274	405	343	357	386	331	353	356	355	361	467	571	519	478	311	496	6,437
Souris River																			
	F	99	346	449	394	411	437	472	434	380	399	400	463	518	453	412	325	719	7,111
	M	101	401	493	420	421	467	482	456	397	383	416	448	536	458	391	309	521	7,100
Spruce Woods																			
	F	120	407	500	454	422	459	510	493	428	435	408	500	579	523	445	359	750	7,792
	M	113	486	577	492	482	485	409	379	358	393	425	456	561	548	515	334	559	7,572
Turtle Mountain																			
	F	56	232	299	283	289	295	290	292	275	279	261	347	394	356	303	242	541	5,034
	M	63	280	328	299	324	324	317	277	292	273	224	303	380	378	302	230	438	5,032
Whitemud																			
	F	87	274	402	389	369	285	356	389	401	356	349	344	392	360	336	228	618	5,935
	M	89	323	433	411	370	356	360	501	511	422	351	360	374	374	319	243	434	6,231
	F	494	1,871	2,351	2,198	2,164	2,212	2,287	2,274	2,119	2,101	2,063	2,534	2,838	2,576	2,256	1,650	3,852	37,840
	M	506	2,049	2,623	2,312	2,338	2,404	2,265	2,266	2,217	2,133	2,086	2,433	2,860	2,698	2,315	1,675	2,875	38,055
RHA Sub-Total (Sex)																			
	F	1,109	4,243	5,348	4,922	4,937	5,458	5,695	5,399	5,160	4,968	4,729	5,595	5,942	5,368	4,795	3,594	8,420	85,682
	M	1,116	4,552	5,700	5,171	5,238	5,625	5,459	5,429	5,219	5,060	4,756	5,361	5,824	5,433	4,641	3,420	6,074	84,078
RHA Total		2,225	8,795	11,048	10,093	10,175	11,083	11,154	10,828	10,379	10,028	9,485	10,956	11,766	10,801	9,436	7,014	14,494	169,760

Prairie Mountain Health Region

District	2012	2013	2014	2015	2016
PMH Brandon Zone					
Brandon Downtown	10,967	11,352	11,710	12,014	12,082
Brandon East End	6,779	6,789	6,753	6,892	7,056
Brandon North Hill	7,182	7,289	7,420	7,564	7,545
Brandon South End	9,680	9,940	10,037	10,282	10,435
Brandon West End	15,056	15,284	15,362	15,484	15,984
PMH North Zone					
Agassiz Mountain	7,195	7,242	7,153	7,109	7,118
Dauphin	8,833	8,832	8,868	8,883	8,979
Duck Mountain	5,619	5,594	5,560	5,444	5,471
Porcupine Mountain	9,271	9,117	8,898	8,764	8,655
Riding Mountain	5,242	5,228	5,163	5,172	5,150
Swan River	5,309	5,321	5,345	5,310	5,390
PMH South Zone					
Asessippi	11,344	11,308	11,339	11,353	11,307
Little Saskatchewan	12,596	12,648	12,770	12,810	12,781
Souris River	14,154	14,248	14,228	14,123	14,211
Spruce Woods	15,317	15,361	15,429	15,307	15,364
Turtle Mountain	10,072	10,078	10,155	10,121	10,066
Whitemud	11,060	11,490	11,652	11,845	12,166
R.H.A. Total	165,676	167,121	167,842	168,477	169,760

Note: Manitoba Health Districts are defined by the RHAs, and are subject to change over time. For comparability, all populations have been tabulated using current district definitions, even if different definitions were in use during that population's year.

Prairie Mountain Health Region	Age Group 65+				
	District	2012	2013	2014	2015
PMH Brandon Zone					
Brandon Downtown	1,350	1,399	1,425	1,506	1,576
Brandon East End	1,127	1,090	1,092	1,104	1,101
Brandon North Hill	1,091	1,149	1,215	1,218	1,279
Brandon South End	1,249	1,326	1,361	1,378	1,415
Brandon West End	2,129	2,232	2,323	2,397	2,448
PMH North Zone					
Agassiz Mountain	1,264	1,295	1,330	1,345	1,371
Dauphin	2,000	1,967	2,006	2,033	2,087
Duck Mountain	1,319	1,337	1,370	1,366	1,401
Porcupine Mountain	1,312	1,318	1,307	1,321	1,323
Riding Mountain	1,066	1,089	1,098	1,111	1,142
Swan River	1,136	1,149	1,160	1,167	1,178
PMH South Zone					
Assessippi	2,128	2,109	2,093	2,065	2,091
Little Saskatchewan	2,435	2,488	2,562	2,614	2,659
Souris River	2,624	2,638	2,648	2,651	2,677
Spruce Woods	2,813	2,858	2,894	2,887	2,962
Turtle Mountain	2,006	2,036	2,059	2,045	2,056
Whitemud	2,021	2,060	2,090	2,138	2,178
R.H.A. Total	29,070	29,540	30,033	30,346	30,944

Note: Manitoba Health Districts are defined by the RHAs, and are subject to change over time. For comparability, all populations have been tabulated using current district definitions, even if different definitions were in use during that population's year.

Manitoba Health, Healthy Living and Seniors Population Report - June 1, 2016

Prairie Mountain Health Region

Municipality	Gender	Under 1	1 - 4	5 - 9	10 - 14	15 - 19	20 - 24	25 - 29	30 - 34	35 - 39	40 - 44	45 - 49	50 - 54	55 - 59	60 - 64	65 - 69	70 - 74	75 +	Total
Alonsa - Parkland RM																			
	F	17	46	61	62	63	55	37	47	36	45	47	49	45	39	34	31	42	756
	M	13	46	81	64	54	61	48	38	26	37	49	51	53	36	36	26	48	767
Argyle RM																			
	F	3	15	14	31	28	29	21	15	13	28	38	30	34	33	36	31	57	456
	M	1	16	21	31	34	41	19	21	15	20	35	37	32	40	41	26	35	465
Brandon City																			
	F	347	1,404	1,686	1,547	1,534	1,988	2,276	2,065	1,972	1,775	1,499	1,717	1,642	1,387	1,299	923	2,317	27,378
	M	361	1,503	1,721	1,598	1,575	1,887	1,996	2,068	1,956	1,821	1,528	1,603	1,522	1,305	1,084	739	1,457	25,724
Carberry Town																			
	F	28	56	83	87	75	57	99	71	86	85	74	76	74	67	60	52	125	1,255
	M	20	92	92	101	86	79	67	75	88	84	54	80	83	61	59	40	83	1,244
Cartwright-Roblin Municipality																			
	F	9	38	52	48	46	39	38	36	29	37	22	34	45	40	34	24	52	623
	M	9	38	48	37	49	48	41	30	38	32	43	35	35	38	46	24	40	631
Cornwallis RM																			
	F	37	126	136	102	83	111	168	141	113	93	70	85	77	70	51	35	32	1,530
	M	36	151	133	105	79	57	56	52	52	63	64	69	75	68	60	35	45	1,200
Dauphin City																			
	F	50	200	286	233	257	260	267	266	298	238	269	279	311	305	298	250	696	4,763
	M	57	206	269	270	269	262	237	250	262	246	233	270	273	269	245	196	402	4,216
Dauphin RM																			
	F	9	35	41	39	45	47	43	42	41	49	43	59	74	79	56	39	47	788
	M	13	24	45	43	45	62	45	48	48	41	48	68	71	98	73	57	57	886
Elton RM																			
	F	13	48	69	46	52	45	62	70	69	55	57	71	78	70	38	22	22	887
	M	14	53	78	67	61	61	44	63	62	63	54	61	84	65	64	27	36	957
Grandview Municipality																			
	F	8	23	46	34	47	42	31	38	44	30	36	44	55	68	61	56	137	800
	M	6	45	39	51	27	30	36	39	39	40	32	45	45	70	67	57	104	772
Hamiota Municipality																			
	F	5	35	46	45	36	42	38	42	34	41	30	53	42	56	41	29	101	716
	M	6	23	46	40	37	30	32	33	35	38	39	45	50	55	39	39	70	657

Manitoba Health, Healthy Living and Seniors Population Report - June 1, 2016

Prairie Mountain Health Region

Municipality	Gender	Under 1	1 - 4	5 - 9	10 - 14	15 - 19	20 - 24	25 - 29	30 - 34	35 - 39	40 - 44	45 - 49	50 - 54	55 - 59	60 - 64	65 - 69	70 - 74	75 +	Total
Killarney-Turtle Mountain RM																			
	F	23	87	101	85	89	92	88	97	95	98	100	116	148	127	111	94	246	1,797
	M	19	88	129	112	110	114	100	93	86	92	100	86	138	141	114	89	174	1,785
Melita Town																			
	F	9	25	45	35	36	42	44	26	39	40	33	30	48	28	34	28	97	639
	M	7	41	37	33	39	26	43	30	28	35	23	41	39	34	20	38	43	557
Minnedosa Town																			
	F	15	85	91	100	105	111	96	109	109	83	94	126	141	113	104	67	206	1,755
	M	15	78	113	102	109	113	93	97	114	95	103	129	137	106	110	59	136	1,709
Mountain - North RM																			
	F	5	17	22	18	21	24	22	20	15	17	30	30	31	36	20	30	24	382
	M	5	14	17	18	27	34	30	18	19	18	21	38	38	42	27	22	34	422
Mountain - South RM																			
	F	1	7	10	13	13	9	8	3	8	7	9	18	20	23	6	13	16	184
	M	1	7	8	18	17	6	14	9	9	11	16	21	24	26	21	13	20	241
Municipality of Boissevain-Morton																			
	F	12	65	74	64	52	76	77	68	62	72	60	72	102	91	72	56	160	1,235
	M	16	61	69	76	79	67	68	66	67	75	50	70	72	97	80	64	123	1,200
Municipality of Brenda-Waskada																			
	F	5	16	19	17	26	18	17	16	14	17	19	25	31	34	24	17	20	335
	M	3	15	19	26	26	19	15	21	17	23	20	26	33	32	29	20	24	368
Municipality of Clanwilliam-Erickson																			
	F	4	30	22	36	35	19	24	29	20	29	29	39	34	41	52	28	58	529
	M	5	26	32	14	19	22	35	27	25	33	19	34	39	39	41	41	48	499
Municipality of Deloraine-Winchester																			
	F	4	32	39	42	33	35	23	39	32	37	37	57	67	52	41	46	108	724
	M	12	37	36	35	45	47	46	27	44	29	36	42	65	66	48	31	89	735
Municipality of Ethelbert																			
	F	2	12	14	17	15	12	12	21	12	15	15	23	28	21	36	15	33	303
	M	4	13	23	10	20	18	15	13	16	17	29	23	28	35	27	29	34	354
Municipality of Gilbert Plains																			
	F	4	31	57	40	57	36	40	42	35	46	53	52	64	59	47	46	80	789
	M	10	28	32	44	62	47	48	47	43	50	51	54	61	59	58	47	75	816

Manitoba Health, Healthy Living and Seniors Population Report - June 1, 2016

Prairie Mountain Health Region

Municipality	Gender	Under 1	1 - 4	5 - 9	10 - 14	15 - 19	20 - 24	25 - 29	30 - 34	35 - 39	40 - 44	45 - 49	50 - 54	55 - 59	60 - 64	65 - 69	70 - 74	75 +	Total
Municipality of Glenboro-South Cypress																			
	F	11	22	28	40	29	35	29	33	43	32	29	46	53	40	43	46	79	638
	M	15	39	43	39	41	44	31	27	42	40	23	43	47	50	48	33	54	659
Municipality of Glenella-Lansdowne																			
	F	4	16	33	21	31	23	25	17	21	28	26	24	38	45	37	24	55	468
	M	4	22	32	42	39	19	10	24	27	22	35	32	31	58	37	36	46	516
Municipality of Grassland																			
	F	17	42	41	42	45	33	48	53	41	31	36	47	59	53	46	28	62	724
	M	14	53	65	54	44	47	52	40	39	39	25	59	60	44	51	32	51	769
Municipality of Harrison Park																			
	F	8	31	35	27	18	53	39	27	37	37	38	82	95	100	94	64	93	878
	M	3	15	28	26	23	35	33	37	37	44	51	75	87	111	105	69	101	880
Municipality of Hillsburg-Roblin-Shell River																			
	F	26	82	102	83	88	102	88	89	75	83	100	118	141	129	134	99	253	1,792
	M	18	74	116	74	115	106	96	110	75	94	88	125	134	151	131	103	176	1,786
Municipality of McCreary																			
	F	5	22	22	30	22	21	14	26	24	31	19	28	35	44	33	29	65	470
	M	2	25	34	19	29	20	17	23	30	27	28	18	25	48	39	26	64	474
Municipality of Minitonas-Bowsman																			
	F	4	31	37	53	62	59	50	35	46	68	56	64	62	58	55	36	63	839
	M	5	30	55	56	65	66	49	30	45	59	59	59	75	60	62	45	67	887
Municipality of Norfolk-Treherne																			
	F	8	29	38	38	42	42	45	44	32	41	41	55	53	47	47	35	98	735
	M	10	40	50	36	50	47	45	42	34	39	51	44	63	62	45	42	50	750
Municipality of North Cypress-Langford																			
	F	4	18	35	36	44	49	30	24	30	32	44	46	83	58	51	30	61	675
	M	7	17	40	31	42	43	47	39	34	38	38	54	76	69	60	38	62	735
Municipality of Oakland-Wawanesa																			
	F	12	36	60	45	45	44	57	58	44	42	49	42	53	52	35	34	46	754
	M	10	44	62	49	54	47	48	49	33	49	46	51	56	48	34	24	47	751
Municipality of Russell-Binscarth																			
	F	20	73	81	73	68	106	87	93	87	78	87	113	93	94	89	68	193	1,503
	M	19	67	64	77	81	101	97	85	86	92	74	117	111	99	83	52	132	1,437

Manitoba Health, Healthy Living and Seniors Population Report - June 1, 2016

Prairie Mountain Health Region

Municipality	Gender	Under 1	1 - 4	5 - 9	10 - 14	15 - 19	20 - 24	25 - 29	30 - 34	35 - 39	40 - 44	45 - 49	50 - 54	55 - 59	60 - 64	65 - 69	70 - 74	75 +	Total	
Municipality of Souris-Glenwood																				
	F	16	45	68	67	78	70	79	63	67	70	69	97	87	86	79	62	156	1,259	
	M	8	63	70	59	81	85	72	75	65	73	54	67	99	91	59	52	117	1,190	
Municipality of Ste. Rose																				
	F	10	35	45	56	63	57	47	38	53	56	52	70	96	79	72	54	144	1,027	
	M	10	44	50	49	65	47	48	66	48	51	52	61	73	74	78	67	97	980	
Municipality of Swan Valley West																				
	F	7	27	43	44	43	38	49	50	34	41	48	45	91	81	77	50	107	875	
	M	5	29	57	52	51	39	54	43	48	40	47	54	94	95	63	61	111	943	
Municipality of Two Borders																				
	F	7	22	18	21	28	29	23	23	29	21	30	37	53	54	52	28	42	517	
	M	1	19	25	29	22	45	40	25	30	29	25	42	51	48	52	38	49	570	
Neepawa Town																				
	F	37	134	190	197	163	110	159	230	225	175	154	146	148	140	143	88	322	2,761	
	M	47	143	196	181	152	145	182	308	325	233	180	137	124	132	118	93	184	2,880	
Pipestone RM																				
	F	10	38	55	38	46	46	56	47	39	42	42	49	64	58	48	43	93	814	
	M	16	46	65	35	46	52	50	54	48	42	48	46	65	63	58	27	71	832	
Prairie View Municipality																				
	F	10	56	69	57	68	54	65	59	55	56	56	75	97	94	60	47	119	1,097	
	M	11	61	68	65	62	67	85	61	68	60	56	70	110	96	74	52	71	1,137	
Riverdale Municipality																				
	F	13	51	64	58	56	54	79	66	51	61	62	79	55	61	51	51	84	996	
	M	12	56	72	59	54	60	73	65	57	54	64	68	73	69	50	45	69	1,000	
RM of Ellice-Archie																				
	F	2	14	24	23	31	41	24	21	10	23	23	42	36	27	23	11	28	403	
	M	2	16	34	23	31	44	28	22	25	16	21	43	49	45	23	19	31	472	
RM of Lakeshore																				
	F	7	22	32	38	31	34	30	25	32	36	43	62	52	56	57	42	53	652	
	M	7	26	37	32	40	44	37	22	31	36	47	62	70	68	58	52	63	732	
RM of Minto-Odanah																				
	F	3	7	8	9	12	11	8	5	14	12	5	12	32	18	17	19	28	220	
	M	0	14	14	12	14	18	10	14	16	11	9	11	28	29	22	10	29	261	

Manitoba Health, Healthy Living and Seniors Population Report - June 1, 2016

Prairie Mountain Health Region

Municipality	Gender	Under 1	1 - 4	5 - 9	10 - 14	15 - 19	20 - 24	25 - 29	30 - 34	35 - 39	40 - 44	45 - 49	50 - 54	55 - 59	60 - 64	65 - 69	70 - 74	75 +	Total
RM of Mossey River																			
	F	3	25	25	35	31	36	28	25	26	29	35	47	49	53	39	29	74	589
	M	13	20	31	29	34	39	46	21	26	36	24	48	65	49	46	34	64	625
RM of Oakview																			
	F	8	32	36	37	35	53	40	39	41	34	34	66	72	55	54	24	56	716
	M	10	29	52	38	38	55	64	37	38	38	45	59	88	62	41	44	43	781
RM of Prairie Lakes																			
	F	7	16	24	27	32	25	29	36	24	27	32	58	72	60	47	32	66	614
	M	4	18	32	34	22	44	33	30	30	23	34	57	68	59	69	33	56	646
RM of Riding Mountain West																			
	F	4	19	19	32	42	30	29	28	18	35	42	46	55	53	35	25	50	562
	M	5	19	29	28	43	40	45	26	29	33	44	53	54	60	39	38	55	640
RM of Sifton																			
	F	6	36	54	50	55	54	36	45	39	51	39	43	50	57	49	30	40	734
	M	10	45	60	51	50	58	55	49	48	37	36	44	60	47	46	35	39	770
RM of Wallace-Woodworth																			
	F	9	56	71	84	71	69	72	63	57	63	76	84	111	96	100	63	135	1,280
	M	14	65	62	78	89	110	83	76	57	55	82	82	114	110	87	68	113	1,345
RM of Yellowhead																			
	F	11	41	44	40	67	54	54	55	54	60	59	64	93	98	87	50	173	1,104
	M	16	40	61	64	72	62	39	63	46	61	63	78	89	96	92	59	95	1,096
Rosedale RM																			
	F	14	50	61	48	56	46	43	47	39	36	51	52	49	50	45	34	55	776
	M	11	49	73	56	51	70	54	55	37	45	44	57	60	54	45	36	59	856
Rosburn Municipality																			
	F	7	31	50	37	30	32	27	32	37	29	39	43	39	40	39	29	79	620
	M	2	34	54	48	58	41	33	34	30	34	40	38	41	47	39	36	57	666
Swan River Town																			
	F	35	124	158	152	137	184	167	156	148	140	160	211	176	163	153	149	362	2,775
	M	32	132	177	154	161	194	180	151	126	143	144	182	176	149	135	110	269	2,615
Unorganized Territories - Parkland																			
	F	30	107	138	93	112	129	84	65	72	88	71	71	74	66	37	31	37	1,305
	M	28	112	128	137	135	129	101	68	86	84	91	75	82	64	46	38	34	1,438

Manitoba Health, Healthy Living and Seniors Population Report - June 1, 2016

Prairie Mountain Health Region

Municipality	Gender	Under 1	1 - 4	5 - 9	10 - 14	15 - 19	20 - 24	25 - 29	30 - 34	35 - 39	40 - 44	45 - 49	50 - 54	55 - 59	60 - 64	65 - 69	70 - 74	75 +	Total
Victoria RM																			
	F	10	38	47	38	28	42	35	33	35	37	27	34	44	54	41	28	74	645
	M	9	52	59	49	43	43	36	35	28	35	29	34	47	42	58	28	58	685
Viriden Town																			
	F	34	96	127	104	122	141	137	158	125	130	101	121	123	102	89	83	235	2,028
	M	39	124	159	111	109	111	141	154	131	115	117	110	123	87	81	65	141	1,918
Whitehead RM																			
	F	1	12	23	18	26	27	27	24	34	18	20	31	29	17	16	20	15	358
	M	3	21	28	24	25	20	24	20	29	20	23	21	24	33	18	16	19	368
Non-FN Sub-Total(Sex)																			
	F	1,030	3,969	5,019	4,632	4,705	5,222	5,470	5,235	5,014	4,810	4,559	5,435	5,803	5,277	4,729	3,547	8,371	82,827
	M	1,055	4,308	5,370	4,895	5,000	5,368	5,266	5,245	5,073	4,910	4,584	5,204	5,689	5,351	4,581	3,375	6,021	81,295
Birdtail Sioux FN																			
	F	5	24	16	24	10	14	11	15	4	9	6	6	4	3	3	0	1	155
	M	5	17	25	10	15	13	11	6	9	6	5	5	7	4	1	2	2	143
Crane River FN																			
	F	3	14	16	10	6	14	6	7	4	7	2	8	2	3	1	2	0	105
	M	2	8	10	11	9	10	6	2	2	7	2	1	2	4	5	0	1	82
Ebb & Flow FN																			
	F	18	33	53	46	43	30	35	19	18	17	28	22	20	14	5	7	7	415
	M	3	35	46	46	27	35	24	27	20	19	15	21	14	7	7	7	2	355
Gamblers FN																			
	F	0	3	0	1	2	0	3	1	2	0	1	2	0	1	0	0	1	17
	M	1	2	2	0	0	2	1	0	0	0	1	2	2	1	0	0	1	15
Indian Birch FN																			
	F	3	3	4	6	5	2	3	2	3	2	3	4	0	2	2	0	1	45
	M	2	5	6	4	4	5	2	3	4	5	3	1	1	0	2	1	0	48
Keeseekoowenin FN																			
	F	2	9	11	14	11	10	11	7	6	9	7	8	6	8	5	0	5	129
	M	5	12	12	10	11	11	4	8	11	3	5	10	6	6	2	1	5	122
Oak Lake Sioux FN																			
	F	3	6	11	4	7	3	7	8	7	3	9	13	10	3	1	2	4	101
	M	2	4	13	10	8	7	5	7	7	4	7	6	11	3	4	2	5	105

Manitoba Health, Healthy Living and Seniors Population Report - June 1, 2016

Prairie Mountain Health Region

Municipality	Gender	Under 1	1 - 4	5 - 9	10 - 14	15 - 19	20 - 24	25 - 29	30 - 34	35 - 39	40 - 44	45 - 49	50 - 54	55 - 59	60 - 64	65 - 69	70 - 74	75 +	Total
Pine Creek FN																			
	F	4	17	30	28	20	20	21	17	17	17	15	14	19	11	9	3	3	265
	M	3	27	26	30	20	22	18	25	21	15	21	11	11	13	3	6	3	275
Rolling River FN																			
	F	2	11	12	12	6	13	5	12	4	7	11	9	12	2	3	0	5	126
	M	6	7	15	10	10	9	9	7	7	7	12	10	13	5	1	1	3	132
Shoal River FN																			
	F	11	27	36	21	23	21	19	13	12	12	12	11	6	4	4	1	3	236
	M	6	28	35	31	22	27	23	21	6	10	18	13	10	4	4	5	7	270
Sioux Valley FN																			
	F	9	36	39	33	19	35	37	27	19	22	28	25	23	17	13	10	9	401
	M	7	31	41	39	28	37	32	24	22	26	30	27	27	12	10	6	6	405
Valley River FN																			
	F	2	13	20	14	17	12	21	7	9	3	10	12	5	7	2	6	2	162
	M	3	12	18	9	14	18	10	11	7	11	10	12	8	3	4	4	5	159
Waterhen FN																			
	F	4	15	13	12	18	14	10	7	7	15	11	3	6	5	2	3	2	147
	M	1	10	16	10	13	13	14	10	9	9	14	12	9	6	5	0	5	156
Waywayseecappo FN																			
	F	13	63	68	65	45	48	36	22	34	35	27	23	26	11	16	13	6	551
	M	15	46	65	56	57	48	34	33	21	28	29	26	14	14	12	10	8	516
FN Sub-Total(Sex)																			
	F	79	274	329	290	232	236	225	164	146	158	170	160	139	91	66	47	49	2,855
	M	61	244	330	276	238	257	193	184	146	150	172	157	135	82	60	45	53	2,783
RHA Sub-Total (Sex)																			
	F	1,109	4,243	5,348	4,922	4,937	5,458	5,695	5,399	5,160	4,968	4,729	5,595	5,942	5,368	4,795	3,594	8,420	85,682
	M	1,116	4,552	5,700	5,171	5,238	5,625	5,459	5,429	5,219	5,060	4,756	5,361	5,824	5,433	4,641	3,420	6,074	84,078
RHA Total		2,225	8,795	11,048	10,093	10,175	11,083	11,154	10,828	10,379	10,028	9,485	10,956	11,766	10,801	9,436	7,014	14,494	169,760

Prairie Mountain Health Region

Municipality	2012	2013	2014	2015	2016
Alonsa - Parkland RM	1,551	1,586	1,542	1,521	1,523
Argyle RM	966	953	950	942	921
Brandon City	49,664	50,654	51,282	52,236	53,102
Carberry Town	2,297	2,346	2,389	2,427	2,499
Cartwright-Roblin Municipality	1,224	1,236	1,241	1,236	1,254
Cornwallis RM	2,708	2,738	2,737	2,686	2,730
Dauphin City	8,833	8,832	8,868	8,883	8,979
Dauphin RM	1,671	1,699	1,651	1,673	1,674
Elton RM	1,609	1,670	1,786	1,795	1,844
Grandview Municipality	1,537	1,550	1,529	1,529	1,572
Hamiota Municipality	1,393	1,381	1,391	1,369	1,373
Killarney-Turtle Mountain RM	3,466	3,491	3,550	3,588	3,582
Melita Town	1,162	1,190	1,200	1,176	1,196
Minnedosa Town	3,417	3,447	3,469	3,487	3,464
Mountain - North RM	919	875	816	796	804
Mountain - South RM	464	446	433	425	425
Municipality of Boissevain-Morton	2,339	2,371	2,424	2,432	2,435
Municipality of Brenda-Waskada	747	749	732	713	703
Municipality of Clanwilliam-Erickson	1,057	1,060	1,046	1,048	1,028
Municipality of Deloraine-Winchester	1,485	1,496	1,499	1,480	1,459
Municipality of Ethelbert	664	651	656	656	657
Municipality of Gilbert Plains	1,661	1,644	1,651	1,646	1,605
Municipality of Glenboro-South Cypress	1,321	1,308	1,336	1,312	1,297
Municipality of Glenella-Lansdowne	1,061	1,037	1,026	1,010	984
Municipality of Grassland	1,571	1,530	1,519	1,508	1,493
Municipality of Harrison Park	1,763	1,733	1,697	1,725	1,758
Municipality of Hillsburg-Roblin-Shell Rive	3,753	3,708	3,710	3,603	3,578
Municipality of McCreary	981	967	979	950	944
Municipality of Minitonas-Bowsman	1,903	1,854	1,785	1,768	1,726

Prairie Mountain Health Region

Municipality	2012	2013	2014	2015	2016
Municipality of Norfolk-Treherne	1,576	1,567	1,542	1,473	1,485
Municipality of North Cypress-Langford	1,572	1,517	1,470	1,435	1,410
Municipality of Oakland-Wawanesa	1,427	1,454	1,466	1,461	1,505
Municipality of Russell-Binscarth	2,769	2,777	2,881	2,905	2,940
Municipality of Souris-Glenwood	2,463	2,446	2,484	2,473	2,449
Municipality of Ste. Rose	1,946	1,961	1,974	1,981	2,007
Municipality of Swan Valley West	1,955	1,922	1,887	1,844	1,818
Municipality of Two Borders	1,194	1,161	1,128	1,110	1,087
Neepawa Town	4,469	4,947	5,120	5,325	5,641
Pipestone RM	1,622	1,624	1,637	1,634	1,646
Prairie View Municipality	2,311	2,310	2,287	2,296	2,234
Riverdale Municipality	2,013	2,022	2,015	1,989	1,996
RM of Ellice-Archie	970	925	906	894	875
RM of Lakeshore	1,441	1,407	1,374	1,371	1,384
RM of Minto-Odanah	534	516	519	503	481
RM of Mossey River	1,246	1,234	1,205	1,197	1,214
RM of Oakview	1,531	1,541	1,531	1,498	1,497
RM of Prairie Lakes	1,339	1,302	1,284	1,280	1,260
RM of Riding Mountain West	1,260	1,248	1,230	1,218	1,202
RM of Sifton	1,478	1,500	1,495	1,495	1,504
RM of Wallace-Woodworth	2,757	2,756	2,683	2,661	2,625
RM of Yellowhead	2,172	2,180	2,208	2,240	2,200
Rosedale RM	1,661	1,643	1,647	1,648	1,632
Rosburn Municipality	1,307	1,312	1,278	1,295	1,286
Swan River Town	5,309	5,321	5,345	5,310	5,390
Unorganized Territories - Parkland	2,826	2,828	2,789	2,742	2,743
Victoria RM	1,290	1,312	1,323	1,329	1,330
Virden Town	3,599	3,691	3,801	3,823	3,946
Whitehead RM	736	735	734	733	726

Prairie Mountain Health Region

Municipality	2012	2013	2014	2015	2016
Non-FN Sub-Total	159,960	161,361	162,137	162,783	164,122
Birdtail Sioux FN	291	291	291	313	298
Crane River FN	219	222	197	208	187
Ebb & Flow FN	767	782	777	771	770
Gamblers FN	27	29	29	29	32
Indian Birch FN	121	116	101	102	93
Keeseekoowenin FN	249	238	249	250	251
Oak Lake Sioux FN	233	229	234	227	206
Pine Creek FN	599	568	559	561	540
Rolling River FN	264	263	265	264	258
Shoal River FN	484	508	528	526	506
Sioux Valley FN	827	826	798	790	806
Valley River FN	329	336	321	312	321
Waterhen FN	290	317	310	307	303
Waywayseecappo FN	1,016	1,035	1,046	1,034	1,067
FN Sub-Total	5,716	5,760	5,705	5,694	5,638
R.H.A. Total	165,676	167,121	167,842	168,477	169,760

Prairie Mountain Health Region**Age Group 65+**

Municipality	2012	2013	2014	2015	2016
Alonsa - Parkland RM	190	198	211	212	217
Argyle RM	195	205	209	218	226
Brandon City	6,946	7,196	7,416	7,603	7,819
Carberry Town	381	386	402	410	419
Cartwright-Roblin Municipality	211	210	220	220	220
Cornwallis RM	241	247	243	243	258
Dauphin City	2,000	1,967	2,006	2,033	2,087
Dauphin RM	275	297	305	324	329
Elton RM	189	192	202	206	209
Grandview Municipality	445	448	469	466	482
Hamiota Municipality	312	303	306	308	319
Killarney-Turtle Mountain RM	827	827	818	814	828
Melita Town	263	272	265	263	260
Minnedosa Town	628	643	662	676	682
Mountain - North RM	162	155	146	151	157
Mountain - South RM	108	91	87	89	89
Municipality of Boissevain-Morton	513	525	539	544	555
Municipality of Brenda-Waskada	127	128	126	125	134
Municipality of Clanwilliam-Erickson	244	249	268	266	268
Municipality of Deloraine-Winchester	390	384	376	371	363
Municipality of Ethelbert	177	167	168	161	174
Municipality of Gilbert Plains	331	341	338	339	353
Municipality of Glenboro-South Cypress	270	273	289	289	303
Municipality of Glenella-Lansdowne	223	229	240	238	235
Municipality of Grassland	270	276	270	261	270
Municipality of Harrison Park	474	492	480	493	526
Municipality of Hillsburg-Roblin-Shell Rive	852	869	883	880	896
Municipality of McCreary	252	258	267	267	256
Municipality of Minitonas-Bowsman	325	331	330	336	328

Prairie Mountain Health Region**Age Group 65+**

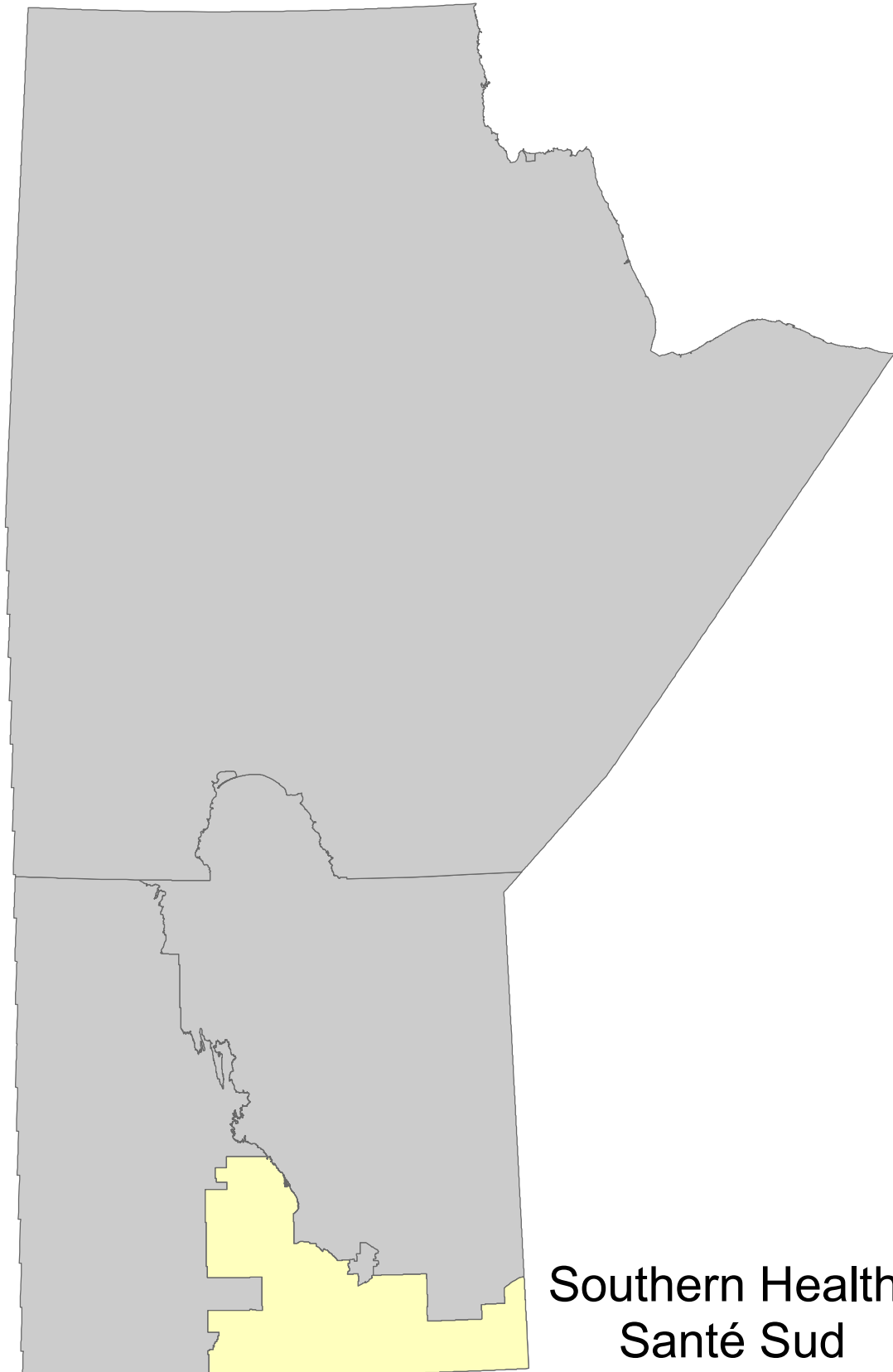
Municipality	2012	2013	2014	2015	2016
Municipality of Norfolk-Treherne	331	335	329	303	317
Municipality of North Cypress-Langford	275	279	285	296	302
Municipality of Oakland-Wawanesa	222	217	224	219	220
Municipality of Russell-Binscarth	620	619	628	615	617
Municipality of Souris-Glenwood	498	507	528	531	525
Municipality of Ste. Rose	458	481	483	491	512
Municipality of Swan Valley West	448	456	467	458	469
Municipality of Two Borders	246	255	256	256	261
Neepawa Town	881	901	901	924	948
Pipestone RM	319	306	322	338	340
Prairie View Municipality	443	455	433	430	423
Riverdale Municipality	356	358	353	354	350
RM of Ellice-Archie	156	142	144	137	135
RM of Lakeshore	313	308	313	317	325
RM of Minto-Odanah	124	127	129	130	125
RM of Mossey River	283	284	287	287	286
RM of Oakview	234	239	242	250	262
RM of Prairie Lakes	261	274	296	296	303
RM of Riding Mountain West	258	251	239	230	242
RM of Sifton	224	233	233	232	239
RM of Wallace-Woodworth	558	565	566	557	566
RM of Yellowhead	511	519	550	562	556
Rosedale RM	261	265	262	270	274
Rosburn Municipality	273	270	266	274	279
Swan River Town	1,136	1,149	1,160	1,167	1,178
Unorganized Territories - Parkland	220	231	220	229	223
Victoria RM	255	270	266	285	287
Virden Town	683	679	682	681	694
Whitehead RM	111	111	113	106	104

This page intentionally left blank

Population of Southern Health-Santé Sud

June 1, 2016

Manitoba RHAs -- Southern Health-Santé Sud



**Southern Health-
Santé Sud**

Manitoba Health, Healthy Living and Seniors Population Report - June 1, 2016

District	Gender	Under 1	1 - 4	5 - 9	10 - 14	15 - 19	20 - 24	25 - 29	30 - 34	35 - 39	40 - 44	45 - 49	50 - 54	55 - 59	60 - 64	65 - 69	70 - 74	75 +	Total
Southern Health-Santé Sud Region																			
Southern East Zone																			
Hanover																			
	F	136	542	662	635	618	605	485	494	474	434	415	396	359	252	195	137	267	7,106
	M	136	558	721	631	663	606	529	440	480	433	425	417	374	289	190	148	210	7,250
Niverville/Richot																			
	F	94	446	515	412	389	369	448	547	499	463	353	413	376	300	224	163	243	6,254
	M	93	389	532	468	401	395	435	488	489	487	410	432	384	333	255	163	191	6,345
Rural East																			
	F	21	77	96	107	103	106	101	107	89	92	105	132	185	155	149	103	186	1,914
	M	29	79	121	116	114	117	105	124	89	102	119	161	180	192	152	131	193	2,124
Ste Anne/La Broquerie																			
	F	102	438	531	491	454	426	461	439	423	394	387	422	384	336	274	191	343	6,496
	M	120	434	537	482	510	449	420	440	409	409	393	455	433	327	300	223	305	6,646
Steinbach																			
	F	170	680	771	667	737	872	777	716	686	634	583	631	515	477	416	327	773	10,432
	M	194	716	839	701	701	897	748	723	642	616	589	595	533	455	340	290	527	10,106
Tache																			
	F	53	279	397	352	352	324	268	340	371	324	345	322	293	239	181	76	103	4,619
	M	59	298	395	393	346	374	290	284	348	354	311	377	316	252	203	120	99	4,819
	F	576	2,462	2,972	2,664	2,653	2,702	2,540	2,643	2,542	2,341	2,188	2,316	2,112	1,759	1,439	997	1,915	36,821
	M	631	2,474	3,145	2,791	2,735	2,838	2,527	2,499	2,457	2,401	2,247	2,437	2,220	1,848	1,440	1,075	1,525	37,290

Manitoba Health, Healthy Living and Seniors Population Report - June 1, 2016

Southern Health-Santé Sud Region

District	Gender	Under 1	1 - 4	5 - 9	10 - 14	15 - 19	20 - 24	25 - 29	30 - 34	35 - 39	40 - 44	45 - 49	50 - 54	55 - 59	60 - 64	65 - 69	70 - 74	75 +	Total
Southern Mid Zone																			
Carman																			
	F	31	177	181	149	148	160	161	195	137	141	139	177	203	173	165	118	384	2,839
	M	39	181	241	183	199	211	153	170	162	155	121	167	218	161	151	131	275	2,918
MacDonald																			
	F	42	183	311	269	258	253	186	221	256	287	272	317	268	193	168	112	124	3,720
	M	48	202	263	273	288	284	177	209	261	271	267	332	292	199	188	114	128	3,796
Morris																			
	F	41	154	184	157	200	185	179	169	145	137	151	171	158	146	99	80	203	2,559
	M	36	139	187	190	190	180	174	172	142	150	161	154	176	147	119	79	138	2,534
Notre Dame/St.Claude																			
	F	22	88	99	70	82	88	88	76	77	72	81	97	114	83	63	53	108	1,361
	M	18	98	101	85	96	104	90	87	71	79	80	104	123	90	82	60	84	1,452
Red River South																			
	F	26	112	192	146	157	165	130	126	121	126	127	170	169	150	108	75	146	2,246
	M	27	135	159	161	182	176	146	121	130	131	149	169	175	144	128	93	118	2,344
St. Pierre																			
	F	29	115	146	136	118	137	147	144	132	125	110	158	164	144	102	89	156	2,152
	M	24	111	157	123	124	143	141	170	154	118	103	150	170	136	122	87	129	2,162
	F	191	829	1,113	927	963	988	891	931	868	888	880	1,090	1,076	889	705	527	1,121	14,877
	M	192	866	1,108	1,015	1,079	1,098	881	929	920	904	881	1,076	1,154	877	790	564	872	15,206

Manitoba Health, Healthy Living and Seniors Population Report - June 1, 2016

Southern Health-Santé Sud Region

District	Gender	Under 1	1 - 4	5 - 9	10 - 14	15 - 19	20 - 24	25 - 29	30 - 34	35 - 39	40 - 44	45 - 49	50 - 54	55 - 59	60 - 64	65 - 69	70 - 74	75 +	Total
Southern North Zone																			
Cartier/St. François Xavier																			
	F	37	193	296	257	214	230	206	230	244	250	284	290	316	232	165	126	158	3,728
	M	48	225	287	277	253	261	241	236	235	267	270	323	296	252	188	142	140	3,941
City of Portage La Prairie																			
	F	105	450	520	487	453	538	580	490	489	439	453	537	552	487	395	340	757	8,072
	M	110	485	520	501	515	561	545	515	416	474	456	530	532	444	384	264	453	7,705
MacGregor																			
	F	28	115	161	153	156	163	109	123	129	139	111	142	133	104	113	78	152	2,109
	M	36	151	149	176	164	192	155	126	126	144	133	148	139	128	104	78	133	2,282
Rural Portage																			
	F	59	215	254	255	220	231	223	217	206	212	178	224	264	227	160	109	158	3,412
	M	58	242	295	254	297	262	238	228	198	191	200	240	262	201	171	136	160	3,633
Seven Regions																			
	F	63	200	292	231	224	220	176	171	149	157	191	173	153	150	113	77	192	2,932
	M	55	269	270	265	280	259	216	187	167	163	182	191	171	163	119	111	166	3,234
	F	292	1,173	1,523	1,383	1,267	1,382	1,294	1,231	1,217	1,197	1,217	1,366	1,418	1,200	946	730	1,417	20,253
	M	307	1,372	1,521	1,473	1,509	1,535	1,395	1,292	1,142	1,239	1,241	1,432	1,400	1,188	966	731	1,052	20,795

Manitoba Health, Healthy Living and Seniors Population Report - June 1, 2016

Southern Health-Santé Sud Region

District	Gender	Under 1	1 - 4	5 - 9	10 - 14	15 - 19	20 - 24	25 - 29	30 - 34	35 - 39	40 - 44	45 - 49	50 - 54	55 - 59	60 - 64	65 - 69	70 - 74	75 +	Total
Southern West Zone																			
Altona																			
	F	79	316	397	359	376	363	304	290	292	281	270	283	256	228	175	136	352	4,757
	M	83	352	440	416	424	411	322	290	286	260	298	298	256	235	173	150	234	4,928
Lorne/Louise/Pembina																			
	F	55	184	256	240	251	246	237	232	202	183	200	309	268	254	227	170	445	3,959
	M	55	241	267	229	269	287	263	234	198	200	248	282	317	254	235	181	300	4,060
Morden																			
	F	74	298	343	302	289	370	330	363	336	302	285	294	303	263	254	190	464	5,060
	M	81	335	372	320	298	357	305	361	325	321	270	298	282	238	227	164	331	4,885
Roland/Thompson																			
	F	20	76	88	71	59	87	60	62	74	47	52	64	67	65	49	31	67	1,039
	M	20	62	88	85	71	72	84	64	69	52	46	61	67	66	70	37	51	1,065
Stanley																			
	F	35	174	249	300	337	240	157	163	155	198	177	181	178	97	65	52	47	2,805
	M	49	181	299	315	318	288	186	140	160	175	212	156	182	131	84	39	49	2,964
Winkler																			
	F	157	641	717	666	620	709	641	561	520	460	463	421	419	353	260	226	580	8,414
	M	175	627	748	706	713	729	658	534	535	478	432	448	378	365	257	142	373	8,298
	F	420	1,689	2,050	1,938	1,932	2,015	1,729	1,671	1,579	1,471	1,447	1,552	1,491	1,260	1,030	805	1,955	26,034
	M	463	1,798	2,214	2,071	2,093	2,144	1,818	1,623	1,573	1,486	1,506	1,543	1,482	1,289	1,046	713	1,338	26,200
RHA Sub-Total (Sex)																			
	F	1,479	6,153	7,658	6,912	6,815	7,087	6,454	6,476	6,206	5,897	5,732	6,324	6,097	5,108	4,120	3,059	6,408	97,985
	M	1,593	6,510	7,988	7,350	7,416	7,615	6,621	6,343	6,092	6,030	5,875	6,488	6,256	5,202	4,242	3,083	4,787	99,491
RHA Total																			
		3,072	12,663	15,646	14,262	14,231	14,702	13,075	12,819	12,298	11,927	11,607	12,812	12,353	10,310	8,362	6,142	11,195	197,476

Southern Health-Santé Sud Region

District	2012	2013	2014	2015	2016
Southern East Zone					
Hanover	12,061	12,262	13,002	13,863	14,356
Niverville/Richot	10,570	11,094	11,684	12,141	12,599
Rural East	3,850	3,956	3,956	4,024	4,038
Ste Anne/La Broquerie	10,110	10,463	11,542	12,565	13,142
Steinbach	20,500	21,327	20,817	20,252	20,538
Tache	9,003	9,193	9,263	9,468	9,438
Southern Mid Zone					
Carman	5,653	5,691	5,728	5,744	5,757
MacDonald	6,777	6,991	7,136	7,342	7,516
Morris	4,986	5,058	5,076	5,068	5,093
Notre Dame/St Claude	2,783	2,811	2,809	2,790	2,813
Red River South	4,583	4,628	4,648	4,662	4,590
St. Pierre	4,186	4,266	4,244	4,266	4,314
Southern North Zone					
Cartier/St. François Xavier	7,002	7,194	7,373	7,552	7,669
City of Portage La Prairie	15,221	15,314	15,529	15,538	15,777
MacGregor	4,245	4,256	4,362	4,381	4,391
Rural Portage	6,832	6,879	6,889	6,995	7,045
Seven Regions	6,126	6,193	6,153	6,173	6,166

Note: Manitoba Health Districts are defined by the RHAs, and are subject to change over time. For comparability, all populations have been tabulated using current district definitions, even if different definitions were in use during that population's year.

Southern Health-Santé Sud Region

District	2012	2013	2014	2015	2016
Southern West Zone					
Altona	9,494	9,548	9,522	9,513	9,685
Lorne/Louise/Pembina	7,913	7,921	7,930	8,015	8,019
Morden	8,932	9,277	9,464	9,644	9,945
Roland/Thompson	2,103	2,077	2,082	2,089	2,104
Stanley	5,916	5,843	5,851	5,850	5,769
Winkler	14,480	15,142	15,781	16,322	16,712
R.H.A. Total	183,326	187,384	190,841	194,257	197,476

Note: Manitoba Health Districts are defined by the RHAs, and are subject to change over time. For comparability, all populations have been tabulated using current district definitions, even if different definitions were in use during that population's year.

Southern Health-Santé Sud Region		Age Group 65+			
District	2012	2013	2014	2015	2016
Southern East Zone					
Hanover	1,008	1,043	1,045	1,076	1,147
Niverville/Richot	868	930	1,029	1,126	1,239
Rural East	849	862	892	905	914
Ste Anne/La Broquerie	1,340	1,396	1,500	1,575	1,636
Steinbach	2,320	2,433	2,499	2,579	2,673
Tache	596	648	685	741	782
Southern Mid Zone					
Carman	1,147	1,193	1,201	1,207	1,224
MacDonald	624	690	736	794	834
Morris	679	687	698	701	718
Notre Dame/St Claude	437	433	434	441	450
Red River South	635	639	662	665	668
St. Pierre	617	636	660	672	685
Southern North Zone					
Cartier/St. François Xavier	746	795	819	859	919
City of Portage La Prairie	2,383	2,466	2,516	2,535	2,593
MacGregor	599	607	627	640	658
Rural Portage	811	824	857	868	894
Seven Regions	760	765	755	768	778

Note: Manitoba Health Districts are defined by the RHAs, and are subject to change over time. For comparability, all populations have been tabulated using current district definitions, even if different definitions were in use during that population's year.

Southern Health-Santé Sud Region		Age Group 65+			
District	2012	2013	2014	2015	2016
Southern West Zone					
Altona	1,155	1,176	1,174	1,203	1,220
Lorne/Louise/Pembina	1,507	1,506	1,523	1,552	1,558
Morden	1,387	1,444	1,521	1,561	1,630
Roland/Thompson	286	280	285	291	305
Stanley	314	317	328	341	336
Winkler	1,655	1,707	1,732	1,771	1,838
R.H.A. Total	22,723	23,477	24,178	24,871	25,699

Note: Manitoba Health Districts are defined by the RHAs, and are subject to change over time. For comparability, all populations have been tabulated using current district definitions, even if different definitions were in use during that population's year.

Southern Health-Santé Sud Region **Manitoba Health, Healthy Living and Seniors Population Report** **June 1, 2016**

Municipality	Gender	Under 1	1 - 4	5 - 9	10 - 14	15 - 19	20 - 24	25 - 29	30 - 34	35 - 39	40 - 44	45 - 49	50 - 54	55 - 59	60 - 64	65 - 69	70 - 74	75 +	Total
Alonsa - Central RM																			
	F	10	27	36	24	23	32	26	20	12	17	22	17	14	12	10	9	15	326
	M	13	55	29	29	32	38	32	28	23	27	32	32	23	14	23	7	13	450
Altona Town																			
	F	39	156	171	159	184	180	170	145	172	162	149	158	149	140	104	98	290	2,626
	M	42	168	215	192	204	200	164	148	155	147	172	171	135	133	107	92	173	2,618
Carman Town																			
	F	22	123	105	94	110	121	114	148	94	113	92	118	135	104	117	80	339	2,029
	M	30	122	148	118	131	133	108	121	106	116	90	113	138	104	92	87	218	1,975
Cartier RM																			
	F	25	98	132	122	103	101	109	113	95	88	100	114	134	73	55	41	75	1,578
	M	32	122	130	140	119	107	92	112	100	98	89	127	123	88	59	42	55	1,635
De Salaberry RM																			
	F	12	74	83	87	83	93	88	90	85	83	70	104	107	101	73	66	108	1,407
	M	11	70	106	84	71	100	88	110	107	76	68	104	109	92	92	65	94	1,447
Dufferin RM																			
	F	9	54	76	55	38	39	47	47	43	28	47	59	68	69	48	38	45	810
	M	9	59	93	65	68	78	45	49	56	39	31	54	80	57	59	44	57	943
Hanover RM																			
	F	136	542	662	635	618	605	485	494	474	434	415	396	359	252	195	137	267	7,106
	M	136	558	721	631	663	606	529	440	480	433	425	417	374	289	190	148	210	7,250
Headingley RM																			
	F	9	66	110	99	75	104	64	75	105	112	134	137	134	119	78	71	65	1,557
	M	8	64	105	100	96	118	115	82	103	122	125	135	130	122	98	73	66	1,662
La Broquerie RM																			
	F	47	214	262	241	220	200	197	180	182	162	154	153	108	87	56	45	71	2,579
	M	53	226	270	237	262	205	159	184	168	164	151	173	137	99	63	52	55	2,658
MacDonald RM																			
	F	42	183	311	269	258	253	186	221	256	287	272	317	268	193	168	112	124	3,720
	M	48	202	263	273	288	284	177	209	261	271	267	332	292	199	188	114	128	3,796
Montcalm RM																			
	F	1	14	40	31	39	45	39	36	30	31	38	48	46	42	27	21	41	569
	M	7	35	27	33	37	46	39	35	35	31	37	53	60	35	46	26	28	610

Southern Health-Santé Sud Region **Manitoba Health, Healthy Living and Seniors Population Report** **June 1, 2016**

Municipality	Gender	Under 1	1 - 4	5 - 9	10 - 14	15 - 19	20 - 24	25 - 29	30 - 34	35 - 39	40 - 44	45 - 49	50 - 54	55 - 59	60 - 64	65 - 69	70 - 74	75 +	Total
Morden Town																			
	F	74	298	343	302	289	370	330	363	336	302	285	294	303	263	254	190	464	5,060
	M	81	335	372	320	298	357	305	361	325	321	270	298	282	238	227	164	331	4,885
Morris RM																			
	F	25	96	116	90	107	98	100	91	73	58	79	88	93	84	63	43	93	1,397
	M	19	78	108	109	105	99	111	85	77	88	78	86	95	87	67	51	72	1,415
Morris Town																			
	F	16	58	68	67	93	87	79	78	72	79	72	83	65	62	36	37	110	1,162
	M	17	61	79	81	85	81	63	87	65	62	83	68	81	60	52	28	66	1,119
Municipality of Emerson-Franklin																			
	F	21	77	120	92	98	93	71	77	79	73	76	112	109	91	76	53	103	1,421
	M	13	73	102	99	116	101	86	74	75	83	91	105	104	100	76	62	89	1,449
Municipality of Lorne																			
	F	20	92	120	110	122	114	104	107	87	73	99	141	112	84	76	73	192	1,726
	M	24	106	122	105	121	140	123	98	94	88	123	132	145	94	81	76	144	1,816
Municipality of Louise																			
	F	17	39	46	54	44	62	65	54	38	46	29	69	69	80	75	42	132	961
	M	12	57	50	46	52	48	72	50	40	40	45	65	80	75	73	51	78	934
Municipality of North Norfolk																			
	F	28	115	161	153	156	163	109	123	129	139	111	142	133	104	113	78	152	2,109
	M	36	151	149	176	164	192	155	126	126	144	133	148	139	128	104	78	133	2,282
Municipality of Pembina																			
	F	17	47	81	72	78	60	58	62	73	56	64	87	81	84	71	51	119	1,161
	M	14	64	83	73	87	89	58	76	56	65	73	81	81	82	79	53	77	1,191
Municipality of Rhineland																			
	F	40	160	226	200	192	183	134	145	120	119	121	125	107	88	71	38	62	2,131
	M	41	184	225	224	220	211	158	142	131	113	126	127	121	102	66	58	61	2,310
Municipality of Westlake-Gladstone																			
	F	16	59	99	73	97	79	71	81	71	79	87	99	99	104	86	60	170	1,430
	M	12	76	95	95	105	95	81	69	78	74	95	97	111	114	81	89	146	1,513
Niverville Town																			
	F	41	226	279	169	145	130	196	269	229	185	117	111	104	89	64	61	130	2,545
	M	40	189	252	189	143	151	172	237	210	229	158	118	86	93	73	52	68	2,460

Southern Health-Santé Sud Region **Manitoba Health, Healthy Living and Seniors Population Report** **June 1, 2016**

Municipality	Gender	Under 1	1 - 4	5 - 9	10 - 14	15 - 19	20 - 24	25 - 29	30 - 34	35 - 39	40 - 44	45 - 49	50 - 54	55 - 59	60 - 64	65 - 69	70 - 74	75 +	Total
Piney RM																			
	F	9	20	33	37	41	39	35	44	43	39	42	59	82	69	75	56	73	796
	M	9	37	48	50	50	52	41	56	40	44	57	69	75	93	66	70	93	950
Portage la Prairie City																			
	F	105	450	520	487	453	538	580	490	489	439	453	537	552	487	395	340	757	8,072
	M	110	485	520	501	515	561	545	515	416	474	456	530	532	444	384	264	453	7,705
Portage la Prairie RM																			
	F	47	159	197	192	180	189	194	180	173	186	150	194	242	209	147	105	151	2,895
	M	38	188	232	194	244	216	204	190	166	160	175	217	234	185	161	124	156	3,084
Ritchot RM																			
	F	53	220	236	243	244	239	252	278	270	278	236	302	272	211	160	102	113	3,709
	M	53	200	280	279	258	244	263	251	279	258	252	314	298	240	182	111	123	3,885
RM of Grey																			
	F	22	88	99	70	82	88	88	76	77	72	81	97	114	83	63	53	108	1,361
	M	18	98	101	85	96	104	90	87	71	79	80	104	123	90	82	60	84	1,452
Roland RM																			
	F	11	39	42	28	29	44	30	26	30	17	25	24	36	23	22	14	25	465
	M	10	29	40	32	42	41	44	28	28	23	14	24	33	33	33	15	19	488
St Francois Xavier RM																			
	F	3	29	54	36	36	25	33	42	44	50	50	39	48	40	32	14	18	593
	M	8	39	52	37	38	36	34	42	32	47	56	61	43	42	31	27	19	644
St Pierre-Jolys Village																			
	F	17	41	63	49	35	44	59	54	47	42	40	54	57	43	29	23	48	745
	M	13	41	51	39	53	43	53	60	47	42	35	46	61	44	30	22	35	715
Stanley RM																			
	F	35	174	249	300	337	240	157	163	155	198	177	181	178	97	65	52	47	2,805
	M	49	181	299	315	318	288	186	140	160	175	212	156	182	131	84	39	49	2,964
Ste Anne RM																			
	F	36	154	184	161	171	152	177	165	159	157	177	196	187	153	117	65	91	2,502
	M	42	142	169	165	181	161	174	168	164	171	176	211	203	148	144	89	106	2,614
Ste Anne Town																			
	F	19	70	85	89	63	74	87	94	82	75	56	73	89	96	101	81	181	1,415
	M	25	66	98	80	67	83	87	88	77	74	66	71	93	80	93	82	144	1,374

Southern Health-Santé Sud Region **Manitoba Health, Healthy Living and Seniors Population Report** **June 1, 2016**

Municipality	Gender	Under 1	1 - 4	5 - 9	10 - 14	15 - 19	20 - 24	25 - 29	30 - 34	35 - 39	40 - 44	45 - 49	50 - 54	55 - 59	60 - 64	65 - 69	70 - 74	75 +	Total
Steinbach City																			
	F	170	680	771	667	737	872	777	716	686	634	583	631	515	477	416	327	773	10,432
	M	194	716	839	701	701	897	748	723	642	616	589	595	533	455	340	290	527	10,106
Stuartburn RM																			
	F	10	51	57	64	57	60	49	49	42	43	55	59	73	41	56	29	92	887
	M	17	38	64	59	58	61	51	49	40	46	55	81	71	63	51	44	70	918
Tache RM																			
	F	53	279	397	352	352	324	268	340	371	324	345	322	293	239	181	76	103	4,619
	M	59	298	395	393	346	374	290	284	348	354	311	377	316	252	203	120	99	4,819
Thompson RM																			
	F	9	37	46	43	30	43	30	36	44	30	27	40	31	42	27	17	42	574
	M	10	33	48	53	29	31	40	36	41	29	32	37	34	33	37	22	32	577
Unorganized Territories - South Eastman																			
	F	2	5	6	6	5	6	16	10	4	10	7	12	28	43	18	18	19	215
	M	2	4	9	7	5	4	11	18	8	12	5	10	31	36	35	16	29	242
Winkler City																			
	F	157	641	717	666	620	709	641	561	520	460	463	421	419	353	260	226	580	8,414
	M	175	627	748	706	713	729	658	534	535	478	432	448	378	365	257	142	373	8,298
Non-FN Sub-Total(Sex)																			
	F	1,425	5,955	7,403	6,688	6,644	6,898	6,315	6,343	6,091	5,780	5,600	6,213	6,013	5,031	4,080	3,042	6,388	95,909
	M	1,530	6,277	7,737	7,115	7,181	7,404	6,451	6,192	5,965	5,913	5,765	6,387	6,166	5,139	4,209	3,049	4,773	97,253
Buffalo Point FN																			
	F	0	1	0	0	0	1	1	4	0	0	1	2	2	2	0	0	2	16
	M	1	0	0	0	1	0	2	1	1	0	2	1	3	0	0	1	1	14
Dakota Plains FN																			
	F	0	1	1	2	1	1	0	3	0	1	0	2	3	0	1	0	0	16
	M	1	0	1	5	0	0	1	1	2	2	3	3	1	0	2	1	1	24
Dakota Tipi FN																			
	F	1	6	8	5	2	3	6	6	4	3	2	1	1	8	2	0	2	60
	M	3	4	6	10	7	9	2	11	5	6	3	4	5	5	1	2	0	83
Long Plain FN																			
	F	11	49	48	56	37	38	23	28	29	22	26	27	18	10	10	4	5	441
	M	16	50	56	45	46	37	31	26	25	23	19	16	22	11	7	9	3	442

Southern Health-Santé Sud Region **Manitoba Health, Healthy Living and Seniors Population Report** **June 1, 2016**

Municipality	Gender	Under 1	1 - 4	5 - 9	10 - 14	15 - 19	20 - 24	25 - 29	30 - 34	35 - 39	40 - 44	45 - 49	50 - 54	55 - 59	60 - 64	65 - 69	70 - 74	75 +	Total
Roseau River FN																			
	F	4	21	32	23	20	27	20	13	12	22	13	10	14	17	5	1	2	256
	M	7	27	30	29	29	29	21	12	20	17	21	11	11	9	6	5	1	285
Sandy Bay FN																			
	F	37	114	157	134	104	109	79	70	66	61	82	57	40	34	17	8	7	1,176
	M	30	138	146	141	143	126	103	90	66	62	55	62	37	35	15	15	7	1,271
Swan Lake FN																			
	F	1	6	9	4	7	10	10	9	4	8	8	12	6	6	5	4	2	111
	M	5	14	12	5	9	10	10	10	8	7	7	4	11	3	2	1	1	119
FN Sub-Total(Sex)																			
	F	54	198	255	224	171	189	139	133	115	117	132	111	84	77	40	17	20	2,076
	M	63	233	251	235	235	211	170	151	127	117	110	101	90	63	33	34	14	2,238
RHA Sub-Total (Sex)																			
	F	1,479	6,153	7,658	6,912	6,815	7,087	6,454	6,476	6,206	5,897	5,732	6,324	6,097	5,108	4,120	3,059	6,408	97,985
	M	1,593	6,510	7,988	7,350	7,416	7,615	6,621	6,343	6,092	6,030	5,875	6,488	6,256	5,202	4,242	3,083	4,787	99,491
RHA Total																			
		3,072	12,663	15,646	14,262	14,231	14,702	13,075	12,819	12,298	11,927	11,607	12,812	12,353	10,310	8,362	6,142	11,195	197,476

Southern Health-Santé Sud Region

Municipality	2012	2013	2014	2015	2016
Alonsa - Central RM	801	768	767	774	776
Altona Town	4,974	4,999	5,048	5,111	5,244
Carman Town	3,743	3,805	3,905	3,941	4,004
Cartier RM	3,104	3,119	3,151	3,183	3,213
De Salaberry RM	2,801	2,853	2,822	2,844	2,854
Dufferin RM	1,910	1,886	1,823	1,803	1,753
Hanover RM	12,061	12,262	13,002	13,863	14,356
Headingley RM	2,732	2,872	3,016	3,144	3,219
La Broquerie RM	2,871	3,092	4,064	4,906	5,237
MacDonald RM	6,777	6,991	7,136	7,342	7,516
Montcalm RM	1,224	1,203	1,174	1,190	1,179
Morden Town	8,932	9,277	9,464	9,644	9,945
Morris RM	2,773	2,806	2,796	2,802	2,812
Morris Town	2,213	2,252	2,280	2,266	2,281
Municipality of Emerson-Franklin	2,828	2,851	2,904	2,895	2,870
Municipality of Lorne	3,405	3,430	3,449	3,514	3,542
Municipality of Louise	1,881	1,893	1,901	1,903	1,895
Municipality of North Norfolk	4,245	4,256	4,362	4,381	4,391
Municipality of Pembina	2,382	2,346	2,349	2,364	2,352
Municipality of Rhineland	4,520	4,549	4,474	4,402	4,441
Municipality of Westlake-Gladstone	2,889	2,969	2,914	2,904	2,943
Niverville Town	4,102	4,399	4,635	4,903	5,005
Piney RM	1,725	1,755	1,728	1,757	1,746
Portage la Prairie City	15,221	15,314	15,529	15,538	15,777
Portage la Prairie RM	5,889	5,885	5,870	5,944	5,979
Ritchot RM	6,468	6,695	7,049	7,238	7,594
RM of Grey	2,783	2,811	2,809	2,790	2,813
Roland RM	921	895	911	928	953
St Francois Xavier RM	1,166	1,203	1,206	1,225	1,237

Southern Health-Santé Sud Region

Municipality	2012	2013	2014	2015	2016
St Pierre-Jolys Village	1,385	1,413	1,422	1,422	1,460
Stanley RM	5,916	5,843	5,851	5,850	5,769
Ste Anne RM	4,747	4,856	4,924	5,001	5,116
Ste Anne Town	2,492	2,515	2,554	2,658	2,789
Steinbach City	20,500	21,327	20,817	20,252	20,538
Stuartburn RM	1,668	1,718	1,737	1,777	1,805
Tache RM	9,003	9,193	9,263	9,468	9,438
Thompson RM	1,182	1,182	1,171	1,161	1,151
Unorganized Territories - South Eastman	429	455	462	459	457
Winkler City	14,480	15,142	15,781	16,322	16,712
Non-FN Sub-Total	179,143	183,080	186,520	189,869	193,162
Buffalo Point FN	28	28	29	31	30
Dakota Plains FN	44	38	38	35	40
Dakota Tipi FN	112	128	124	131	143
Long Plain FN	787	828	857	885	883
Roseau River FN	531	574	570	577	541
Sandy Bay FN	2,436	2,456	2,472	2,495	2,447
Swan Lake FN	245	252	231	234	230
FN Sub-Total	4,183	4,304	4,321	4,388	4,314
R.H.A. Total	183,326	187,384	190,841	194,257	197,476

Southern Health-Santé Sud Region**Age Group 65+**

Municipality	2012	2013	2014	2015	2016
Alonsa - Central RM	71	70	72	73	77
Altona Town	798	828	829	848	864
Carman Town	875	915	922	923	933
Cartier RM	303	306	303	315	327
De Salaberry RM	438	453	470	484	498
Dufferin RM	272	278	279	284	291
Hanover RM	1,008	1,043	1,045	1,076	1,147
Headingley RM	324	368	396	405	451
La Broquerie RM	237	250	313	330	342
MacDonald RM	624	690	736	794	834
Montcalm RM	173	171	187	183	189
Morden Town	1,387	1,444	1,521	1,561	1,630
Morris RM	355	358	365	370	389
Morris Town	324	329	333	331	329
Municipality of Emerson-Franklin	451	451	454	463	459
Municipality of Lorne	622	625	619	634	642
Municipality of Louise	426	431	441	448	451
Municipality of North Norfolk	599	607	627	640	658
Municipality of Pembina	441	433	447	454	450
Municipality of Rhineland	357	348	345	355	356
Municipality of Westlake-Gladstone	632	635	617	629	632
Niverville Town	341	369	398	424	448
Piney RM	389	401	419	430	433
Portage la Prairie City	2,383	2,466	2,516	2,535	2,593
Portage la Prairie RM	769	783	810	822	844
Ritchot RM	527	561	631	702	791
RM of Grey	437	433	434	441	450
Roland RM	108	109	113	120	128
St Francois Xavier RM	119	121	120	139	141

Southern Health-Santé Sud Region**Age Group 65+**

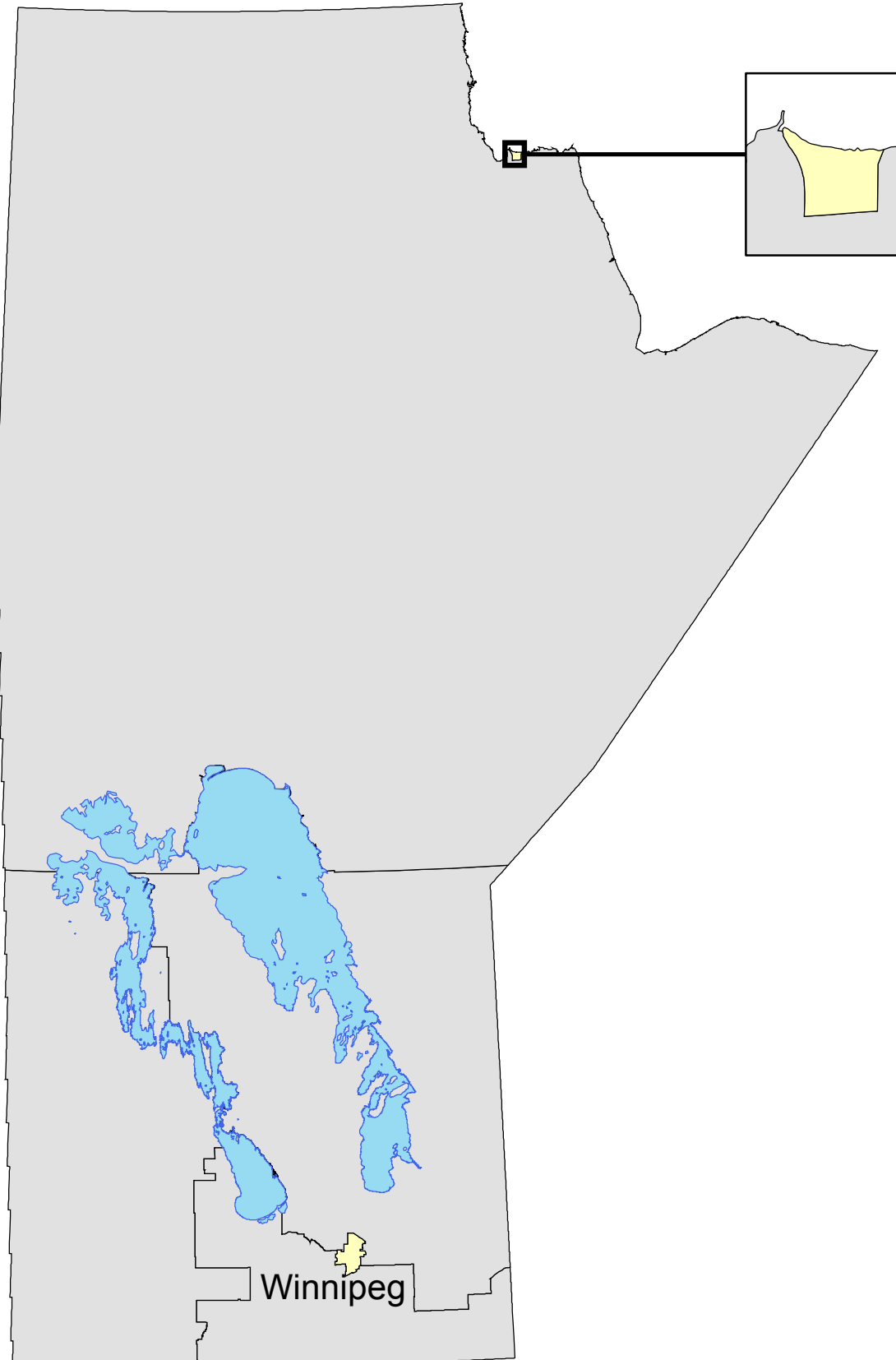
Municipality	2012	2013	2014	2015	2016
St Pierre-Jolys Village	179	183	190	188	187
Stanley RM	314	317	328	341	336
Ste Anne RM	496	537	558	594	612
Ste Anne Town	607	609	629	651	682
Steinbach City	2,320	2,433	2,499	2,579	2,673
Stuartburn RM	345	338	346	338	342
Tache RM	596	648	685	741	782
Thompson RM	178	171	172	171	177
Unorganized Territories - South Eastman	111	119	123	133	135
Winkler City	1,655	1,707	1,732	1,771	1,838
Non-FN Sub-Total	22,591	23,338	24,024	24,720	25,541
Buffalo Point FN	4	4	4	4	4
Dakota Plains FN	3	3	4	4	5
Dakota Tipi FN	7	6	5	6	7
Long Plain FN	32	32	38	36	38
Roseau River FN	11	17	21	19	20
Sandy Bay FN	57	60	66	66	69
Swan Lake FN	18	17	16	16	15
FN Sub-Total	132	139	154	151	158
R.H.A. Total	22,723	23,477	24,178	24,871	25,699

This page intentionally left blank

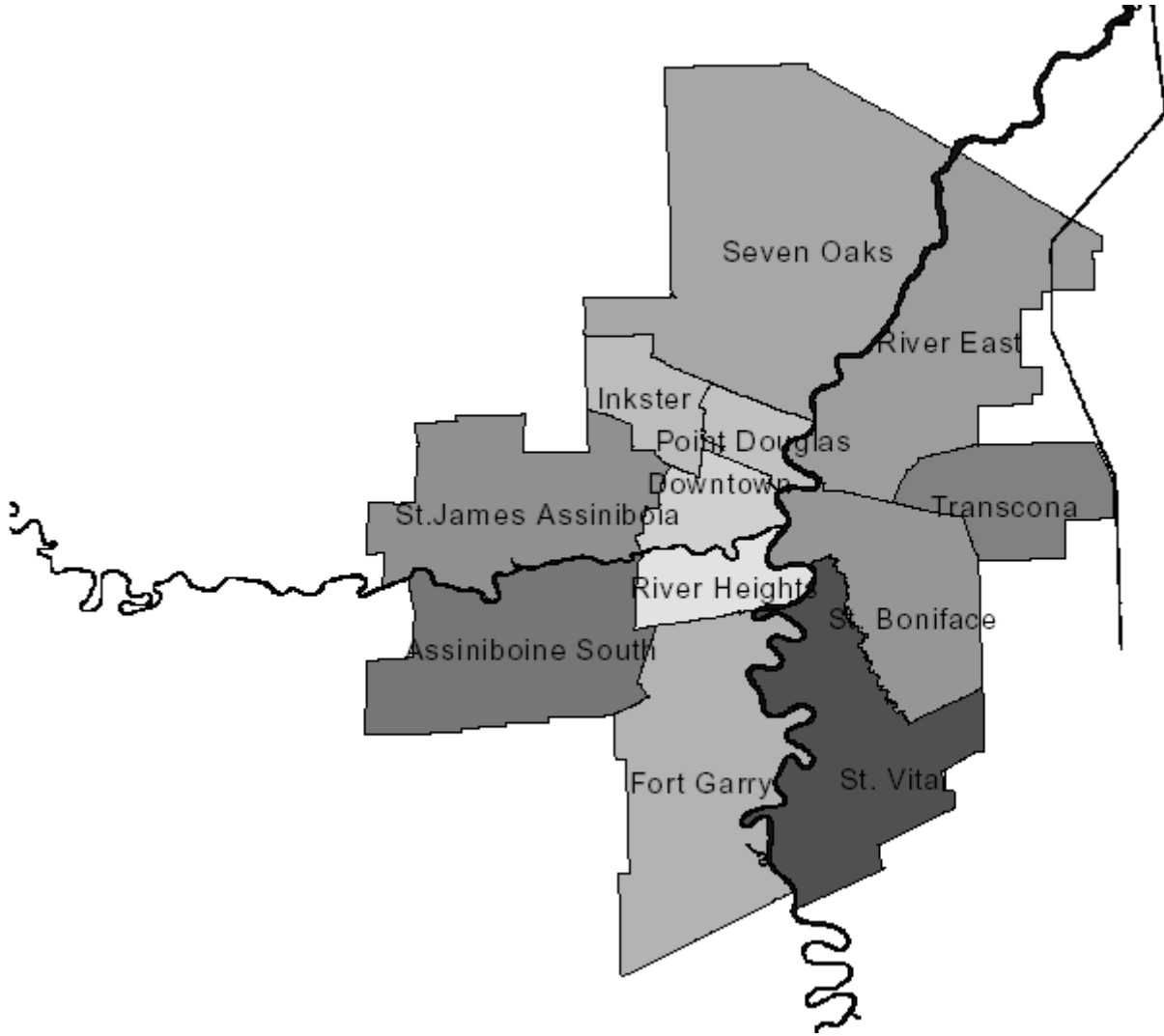
Population of Winnipeg RHA

June 1, 2016

Manitoba RHAs -- Winnipeg



Winnipeg Regional Health Authority Community Areas (CAs)



Manitoba Health, Healthy Living and Seniors Population Report - June 1, 2016

Winnipeg R.H.A.

Municipality	Gender	Under 1	1 - 4	5 - 9	10 - 14	15 - 19	20 - 24	25 - 29	30 - 34	35 - 39	40 - 44	45 - 49	50 - 54	55 - 59	60 - 64	65 - 69	70 - 74	75 +	Total
ASSINIBOINE SOUTH																			
002 - ASSINIBOINE SOUTH																			
	F	161	601	864	877	971	1,140	1,024	995	989	1,118	1,147	1,354	1,387	1,443	1,262	921	2,043	18,297
	M	139	622	908	914	1,060	1,250	1,093	962	944	964	1,034	1,189	1,264	1,254	1,175	854	1,427	17,053
CA Sub-Total		161	601	864	877	971	1,140	1,024	995	989	1,118	1,147	1,354	1,387	1,443	1,262	921	2,043	18,297
	M	139	622	908	914	1,060	1,250	1,093	962	944	964	1,034	1,189	1,264	1,254	1,175	854	1,427	17,053
DOWNTOWN																			
11A - DOWNTOWN WEST																			
	F	217	915	1,220	1,314	1,391	1,498	1,569	1,710	1,574	1,331	1,302	1,380	1,202	1,021	869	549	1,234	20,296
	M	243	971	1,282	1,388	1,480	1,471	1,655	1,738	1,571	1,434	1,355	1,461	1,251	965	797	457	641	20,160
11B - DOWNTOWN EAST																			
	F	259	991	1,106	911	1,096	1,633	2,080	1,763	1,419	1,131	1,078	1,057	1,046	891	845	594	1,535	19,435
	M	301	1,022	1,149	949	1,103	1,654	2,091	2,070	1,661	1,505	1,464	1,575	1,427	1,153	936	572	897	21,529
CA Sub-Total	F	476	1,906	2,326	2,225	2,487	3,131	3,649	3,473	2,993	2,462	2,380	2,437	2,248	1,912	1,714	1,143	2,769	39,731
	M	544	1,993	2,431	2,337	2,583	3,125	3,746	3,808	3,232	2,939	2,819	3,036	2,678	2,118	1,733	1,029	1,538	41,689
FORT GARRY																			
03A - FORT GARRY NORTH																			
	F	147	569	918	990	1,208	1,457	1,262	1,100	1,062	1,198	1,409	1,502	1,375	1,150	976	667	2,199	19,189
	M	134	666	914	1,087	1,323	1,634	1,266	1,124	946	1,118	1,309	1,422	1,336	1,110	888	588	1,316	18,181
03B - FORT GARRY SOUTH																			
	F	295	1,248	1,589	1,557	1,972	2,868	2,442	2,259	2,048	1,890	1,867	1,701	1,473	1,367	1,113	858	1,435	27,982
	M	349	1,375	1,668	1,614	2,267	3,534	2,543	2,197	1,887	1,859	1,861	1,724	1,463	1,270	1,054	746	1,130	28,541
CA Sub-Total	F	442	1,817	2,507	2,547	3,180	4,325	3,704	3,359	3,110	3,088	3,276	3,203	2,848	2,517	2,089	1,525	3,634	47,171
	M	483	2,041	2,582	2,701	3,590	5,168	3,809	3,321	2,833	2,977	3,170	3,146	2,799	2,380	1,942	1,334	2,446	46,722

Manitoba Health, Healthy Living and Seniors Population Report - June 1, 2016

Winnipeg R.H.A.

Municipality	Gender	Under 1	1 - 4	5 - 9	10 - 14	15 - 19	20 - 24	25 - 29	30 - 34	35 - 39	40 - 44	45 - 49	50 - 54	55 - 59	60 - 64	65 - 69	70 - 74	75 +	Total
INKSTER																			
09A - INKSTER WEST																			
	F	94	425	557	573	693	722	747	768	781	635	624	659	620	609	469	267	387	9,630
	M	103	464	582	674	731	793	801	729	758	622	568	651	665	580	437	245	297	9,700
09B - INKSTER EAST																			
	F	113	480	624	576	634	645	582	624	609	558	586	560	476	387	309	207	446	8,416
	M	134	501	623	628	675	702	572	598	593	508	558	611	518	387	258	167	266	8,299
CA Sub-Total		F	207	905	1,181	1,149	1,327	1,367	1,329	1,390	1,193	1,210	1,219	1,096	996	778	474	833	18,046
	M	237	965	1,205	1,302	1,406	1,495	1,373	1,327	1,351	1,130	1,126	1,262	1,183	967	695	412	563	17,999
POINT DOUGLAS																			
10A - POINT DOUGLAS NORTH																			
	F	219	792	988	994	1,081	1,182	1,112	1,163	1,120	1,111	1,128	1,076	941	713	571	368	790	15,349
	M	216	889	1,061	1,027	1,211	1,239	1,156	1,150	1,130	1,105	1,108	1,262	1,063	726	528	321	488	15,680
10B - POINT DOUGLAS SOUTH																			
	F	139	656	824	707	660	684	612	549	525	454	465	520	410	307	254	141	516	8,423
	M	173	676	861	700	671	700	659	578	537	510	588	675	591	420	270	156	238	9,003
CA Sub-Total		F	358	1,448	1,812	1,701	1,866	1,724	1,712	1,645	1,565	1,593	1,596	1,351	1,020	825	509	1,306	23,772
	M	389	1,565	1,922	1,727	1,882	1,939	1,815	1,728	1,667	1,615	1,696	1,937	1,654	1,146	798	477	726	24,683
RIVER EAST																			
07A - RIVER EAST SOUTH																			
	F	132	509	571	476	574	723	842	812	697	692	556	673	604	446	361	222	410	9,300
	M	142	557	540	567	568	663	786	878	778	649	651	698	637	508	335	197	281	9,435
07B - RIVER EAST WEST																			
	F	201	760	923	832	1,011	1,246	1,480	1,373	1,303	1,133	1,169	1,418	1,467	1,503	1,355	977	2,831	20,982
	M	203	835	924	955	1,011	1,165	1,402	1,395	1,232	1,138	1,135	1,319	1,359	1,198	1,113	798	1,552	18,734
07C - RIVER EAST EAST																			
	F	187	748	963	871	913	1,034	1,133	1,155	1,110	1,046	1,016	1,144	1,143	984	789	527	1,335	16,098
	M	199	757	1,010	934	1,044	1,167	1,177	1,158	1,107	1,028	893	1,029	1,062	934	754	499	815	15,567
07D - RIVER EAST NORTH																			
	F	31	175	256	302	338	372	233	196	240	336	359	431	475	378	302	222	277	4,923
	M	34	159	283	294	354	391	247	194	223	294	356	420	441	427	305	238	261	4,921
CA Sub-Total		F	551	2,192	2,713	2,481	2,836	3,375	3,688	3,350	3,207	3,100	3,666	3,689	3,311	2,807	1,948	4,853	51,303
	M	578	2,308	2,757	2,750	2,977	3,386	3,612	3,625	3,340	3,109	3,035	3,466	3,499	3,067	2,507	1,732	2,909	48,657

Manitoba Health, Healthy Living and Seniors Population Report - June 1, 2016

Winnipeg R.H.A.

Municipality	Gender	Under 1	1 - 4	5 - 9	10 - 14	15 - 19	20 - 24	25 - 29	30 - 34	35 - 39	40 - 44	45 - 49	50 - 54	55 - 59	60 - 64	65 - 69	70 - 74	75 +	Total
RIVER HEIGHTS																			
12A - RIVER HEIGHTS WEST																			
	F	184	726	860	895	923	1,195	1,529	1,483	1,333	1,335	1,268	1,415	1,261	1,173	1,063	735	1,621	18,999
	M	159	753	912	875	982	1,180	1,358	1,403	1,291	1,305	1,206	1,291	1,188	997	904	608	1,026	17,438
12B - RIVER HEIGHTS EAST																			
	F	81	305	321	299	326	882	1,447	1,172	866	630	556	615	734	719	660	448	1,073	11,134
	M	103	333	373	301	357	742	1,277	1,155	869	735	590	628	660	632	547	328	571	10,201
CA Sub-Total		F	265	1,031	1,181	1,194	2,077	2,976	2,655	2,199	1,965	1,824	2,030	1,995	1,892	1,723	1,183	2,694	30,133
	M	262	1,086	1,285	1,176	1,339	1,922	2,635	2,558	2,160	2,040	1,796	1,919	1,848	1,629	1,451	936	1,597	27,639

SEVEN OAKS

08A - SEVEN OAKS WEST																			
	F	157	716	923	906	1,023	1,010	1,198	1,249	1,176	965	990	910	847	852	796	528	941	15,187
	M	183	799	1,024	962	1,152	1,278	1,207	1,166	1,133	1,004	901	908	839	737	677	451	648	15,069
08B - SEVEN OAKS EAST																			
	F	219	922	1,174	1,166	1,214	1,331	1,445	1,646	1,648	1,487	1,377	1,567	1,513	1,313	1,161	781	1,850	21,814
	M	224	1,018	1,223	1,199	1,335	1,498	1,433	1,563	1,573	1,446	1,452	1,539	1,458	1,190	957	597	1,119	20,824
08C - SEVEN OAKS NORTH																			
	F	29	92	170	179	167	162	117	162	175	184	203	236	181	205	142	93	274	2,771
	M	28	116	169	174	165	173	165	144	160	212	196	229	227	187	154	98	151	2,748
CA Sub-Total		F	405	1,730	2,267	2,251	2,404	2,760	3,057	2,999	2,636	2,570	2,713	2,541	2,370	2,099	1,402	3,065	39,772
	M	435	1,933	2,416	2,335	2,652	2,949	2,805	2,873	2,866	2,662	2,549	2,676	2,524	2,114	1,788	1,146	1,918	38,641

ST. BONIFACE

05A - ST. BONIFACE WEST																			
	F	70	336	436	340	365	567	778	701	550	463	445	605	563	573	454	319	1,159	8,724
	M	88	339	450	342	359	575	719	681	554	488	484	555	616	512	422	252	601	8,037
05B - ST. BONIFACE EAST																			
	F	253	1,036	1,396	1,376	1,389	1,491	1,384	1,578	1,701	1,772	1,628	1,693	1,534	1,280	1,130	810	1,236	22,687
	M	255	1,075	1,405	1,424	1,392	1,487	1,308	1,384	1,623	1,692	1,647	1,711	1,464	1,262	973	760	1,092	21,954
CA Sub-Total		F	323	1,372	1,832	1,716	2,058	2,162	2,279	2,251	2,235	2,073	2,298	2,097	1,853	1,584	1,129	2,395	31,411
	M	343	1,414	1,855	1,766	1,751	2,062	2,027	2,065	2,177	2,180	2,131	2,266	2,080	1,774	1,395	1,012	1,693	29,991

Manitoba Health, Healthy Living and Seniors Population Report - June 1, 2016

Winnipeg R.H.A.

Municipality	Gender	Under 1	1 - 4	5 - 9	10 - 14	15 - 19	20 - 24	25 - 29	30 - 34	35 - 39	40 - 44	45 - 49	50 - 54	55 - 59	60 - 64	65 - 69	70 - 74	75 +	Total	
ST. JAMES - ASSINIBOIA																				
01A - ST. JAMES - ASSINIBOIA WEST																				
	F	164	628	868	797	876	1,032	1,078	1,148	1,043	1,054	1,089	1,363	1,267	1,115	1,086	934	2,041	17,583	
	M	168	665	857	844	933	1,138	1,073	1,045	977	948	1,036	1,237	1,179	1,004	825	728	1,446	16,103	
01B - ST. JAMES - ASSINIBOIA EAST																				
	F	145	551	644	591	649	937	1,063	1,073	959	912	934	1,026	1,060	837	736	563	1,544	14,224	
	M	159	592	705	686	704	937	1,081	1,064	970	899	889	1,045	1,032	801	643	439	1,024	13,670	
CA Sub-Total		F	309	1,179	1,512	1,388	1,525	1,969	2,141	2,002	1,966	2,023	2,389	2,327	1,952	1,822	1,497	3,585	31,807	
	M	327	1,257	1,562	1,530	1,637	2,075	2,154	2,109	1,947	1,847	1,925	2,282	2,211	1,805	1,468	1,167	2,470	29,773	
ST. VITAL																				
04A - ST. VITAL NORTH																				
	F	153	623	712	630	730	954	1,142	1,180	997	870	846	932	937	924	869	674	1,401	14,574	
	M	155	641	745	672	810	932	1,136	1,118	954	904	887	969	939	804	710	500	912	13,788	
04B - ST. VITAL SOUTH																				
	F	187	821	1,243	1,183	1,285	1,431	1,383	1,399	1,440	1,529	1,513	1,693	1,783	1,605	1,331	910	1,917	22,653	
	M	213	891	1,232	1,228	1,422	1,496	1,431	1,402	1,309	1,438	1,372	1,552	1,584	1,401	1,204	842	1,202	21,219	
CA Sub-Total		F	340	1,444	1,955	1,813	2,015	2,385	2,525	2,579	2,437	2,399	2,625	2,720	2,529	2,200	1,584	3,318	37,227	
	M	368	1,532	1,977	1,900	2,232	2,428	2,567	2,520	2,263	2,342	2,259	2,521	2,523	2,205	1,914	1,342	2,114	35,007	
TRANSCONA																				
006 - TRANSCONA																				
	F	228	995	1,335	1,215	1,312	1,292	1,359	1,483	1,515	1,344	1,304	1,487	1,365	1,090	930	627	1,326	20,207	
	M	267	1,094	1,393	1,255	1,317	1,315	1,393	1,496	1,412	1,432	1,307	1,446	1,362	1,079	801	551	909	19,829	
CA Sub-Total		F	228	995	1,335	1,215	1,312	1,359	1,483	1,515	1,344	1,304	1,487	1,365	1,090	930	627	1,326	20,207	
	M	267	1,094	1,393	1,255	1,317	1,315	1,393	1,496	1,412	1,432	1,307	1,446	1,362	1,079	801	551	909	19,829	
RHA Sub-Total		F	4,073	16,639	21,520	20,595	22,834	27,520	29,077	28,782	26,919	25,213	24,890	27,054	25,705	22,910	19,848	13,950	31,837	389,366
	M	4,377	17,831	22,332	21,731	24,449	29,151	29,065	28,429	26,223	25,273	24,873	27,187	25,667	21,568	17,696	12,001	20,324	378,177	
WRHA Total			8,437	34,430	43,778	42,250	47,227	56,602	58,070	57,133	50,415	49,706	54,163	51,289	44,423	37,500	25,934	52,131	766,560	

Manitoba Health, Healthy Living and Seniors Population Report - June 1, 2016

Winnipeg Health Region

Municipality	Gender	Under 1	1 - 4	5 - 9	10 - 14	15 - 19	20 - 24	25 - 29	30 - 34	35 - 39	40 - 44	45 - 49	50 - 54	55 - 59	60 - 64	65 - 69	70 - 74	75 +	Total
Charleswood/Tuxedo																			
	F	184	697	1,093	1,152	1,307	1,501	1,331	1,240	1,223	1,475	1,555	1,780	1,823	1,855	1,631	1,157	2,864	23,868
	M	161	743	1,118	1,233	1,371	1,622	1,380	1,234	1,170	1,270	1,396	1,589	1,685	1,649	1,492	1,083	1,944	22,140
Churchill Town																			
	F	8	19	35	38	33	32	36	41	39	35	31	37	41	25	15	8	16	489
	M	5	21	39	38	23	37	36	37	31	36	26	41	42	30	29	9	14	494
East Kildonan Community																			
	F	429	1,693	2,097	1,882	2,147	2,492	2,864	2,809	2,715	2,460	2,446	2,870	2,864	2,687	2,281	1,621	4,553	40,910
	M	456	1,778	2,148	2,117	2,281	2,575	2,821	2,879	2,620	2,469	2,304	2,645	2,675	2,336	2,014	1,377	2,577	38,072
East St Paul RM																			
	F	31	174	256	301	338	364	232	195	239	335	359	426	472	370	296	218	272	4,878
	M	34	159	281	294	353	373	236	191	220	292	351	413	430	423	298	231	253	4,832
Fort Garry Community																			
	F	403	1,662	2,218	2,219	2,792	3,901	3,328	3,040	2,808	2,695	2,811	2,736	2,371	2,071	1,692	1,257	2,625	40,629
	M	454	1,869	2,316	2,329	3,215	4,730	3,471	3,011	2,575	2,643	2,778	2,715	2,357	1,956	1,604	1,084	1,833	40,940
Inner City - North																			
	F	511	1,980	2,438	2,267	2,389	2,733	2,647	2,640	2,458	2,399	2,312	2,384	2,076	1,579	1,315	820	1,922	34,870
	M	545	2,179	2,504	2,378	2,565	2,789	2,674	2,664	2,534	2,321	2,417	2,715	2,364	1,717	1,182	736	1,110	35,394
Inner City - South																			
	F	278	1,091	1,260	1,265	1,314	2,154	3,052	2,739	2,285	2,020	1,892	2,090	2,044	1,932	1,756	1,214	2,809	31,195
	M	271	1,151	1,359	1,242	1,415	1,997	2,695	2,601	2,201	2,081	1,839	1,961	1,884	1,665	1,473	957	1,667	28,459
Inner City - West Central																			
	F	552	2,261	2,798	2,606	2,878	3,483	3,938	3,779	3,280	2,703	2,632	2,694	2,451	2,074	1,807	1,215	2,884	44,035
	M	627	2,326	2,895	2,753	2,971	3,480	4,060	4,111	3,512	3,186	3,114	3,372	2,946	2,322	1,849	1,091	1,632	46,247
St Boniface Community																			
	F	322	1,330	1,782	1,699	1,758	2,057	2,160	2,267	2,247	2,240	2,076	2,303	2,106	1,860	1,588	1,128	2,387	31,310
	M	339	1,389	1,817	1,766	1,764	2,086	2,031	2,052	2,169	2,183	2,139	2,286	2,079	1,781	1,400	1,020	1,693	29,994
St James - North																			
	F	102	471	607	626	757	798	803	828	846	692	682	709	658	643	491	286	491	10,490
	M	113	513	648	729	802	862	855	780	829	679	626	706	704	605	453	259	344	10,507
St James - West Central																			
	F	324	1,256	1,615	1,465	1,623	2,062	2,229	2,322	2,118	2,064	2,114	2,482	2,411	2,002	1,878	1,522	3,659	33,146
	M	349	1,331	1,657	1,598	1,738	2,180	2,248	2,213	2,080	1,957	2,022	2,391	2,311	1,870	1,510	1,187	2,518	31,160

Manitoba Health, Healthy Living and Seniors Population Report - June 1, 2016

Winnipeg Health Region

Municipality	Gender	Under 1	1 - 4	5 - 9	10 - 14	15 - 19	20 - 24	25 - 29	30 - 34	35 - 39	40 - 44	45 - 49	50 - 54	55 - 59	60 - 64	65 - 69	70 - 74	75 +	Total
St Vital Community																			
	F	341	1,473	1,963	1,817	2,011	2,393	2,536	2,599	2,458	2,412	2,361	2,624	2,716	2,527	2,199	1,587	3,327	37,344
	M	374	1,541	1,984	1,903	2,223	2,417	2,570	2,538	2,287	2,352	2,257	2,512	2,530	2,206	1,911	1,336	2,117	35,058
Transcona Community																			
	F	198	849	1,179	1,099	1,174	1,164	1,227	1,318	1,311	1,162	1,149	1,310	1,215	983	842	550	1,013	17,743
	M	227	964	1,241	1,107	1,180	1,160	1,257	1,317	1,243	1,238	1,151	1,270	1,226	963	721	515	735	17,515
West Kildonan Community																			
	F	361	1,593	2,015	1,978	2,148	2,220	2,579	2,803	2,721	2,339	2,275	2,370	2,275	2,103	1,915	1,276	2,745	35,716
	M	394	1,751	2,159	2,077	2,385	2,672	2,564	2,655	2,595	2,355	2,261	2,342	2,207	1,861	1,606	1,024	1,740	34,648
West St Paul RM																			
	F	29	90	164	181	165	166	115	162	171	182	195	239	182	199	142	91	270	2,743
	M	28	116	166	167	163	171	167	146	157	211	192	229	227	184	154	92	147	2,717
Non-FN Sub-Total(Sex)																			
	F	4,073	16,639	21,520	20,595	22,834	27,520	29,077	28,782	26,919	25,213	24,890	27,054	25,705	22,910	19,848	13,950	31,837	389,366
	M	4,377	17,831	22,332	21,731	24,449	29,151	29,065	28,429	26,223	25,273	24,873	27,187	25,667	21,568	17,696	12,001	20,324	378,177
RHA Sub-Total (Sex)																			
	F	4,073	16,639	21,520	20,595	22,834	27,520	29,077	28,782	26,919	25,213	24,890	27,054	25,705	22,910	19,848	13,950	31,837	389,366
	M	4,377	17,831	22,332	21,731	24,449	29,151	29,065	28,429	26,223	25,273	24,873	27,187	25,667	21,568	17,696	12,001	20,324	378,177
RHA Total																			
		8,450	34,470	43,852	42,326	47,283	56,671	58,142	57,211	53,142	50,486	49,763	54,241	51,372	44,478	37,544	25,951	52,161	767,543

Winnipeg Health Region

Municipality	2012	2013	2014	2015	2016
Charleswood/Tuxedo	45,445	45,388	45,465	45,575	46,008
Churchill Town	974	1,006	1,000	1,004	983
East Kildonan Community	75,103	76,061	76,757	77,630	78,982
East St Paul RM	9,358	9,478	9,589	9,563	9,710
Fort Garry Community	68,262	71,644	75,253	78,254	81,569
Inner City - North	68,239	68,795	69,241	69,876	70,264
Inner City - South	58,256	58,526	58,777	59,123	59,654
Inner City - West Central	88,994	89,317	90,255	90,133	90,282
St Boniface Community	56,915	58,252	59,462	60,158	61,304
St James - North	19,648	19,716	19,573	19,795	20,997
St James - West Central	62,015	62,373	62,857	63,454	64,306
St Vital Community	68,136	69,208	70,311	71,183	72,402
Transcona Community	33,098	33,614	34,212	34,585	35,258
West Kildonan Community	63,994	65,729	67,761	68,849	70,364
West St Paul RM	5,054	5,080	5,090	5,207	5,460
Non-FN Sub-Total	723,491	734,187	745,603	754,389	767,543
R.H.A. Total	723,491	734,187	745,603	754,389	767,543

Winnipeg Health Region**Age Group 65+**

Municipality	2012	2013	2014	2015	2016
Charleswood/Tuxedo	8,700	9,141	9,525	9,855	10,171
Churchill Town	79	80	84	87	91
East Kildonan Community	13,038	13,394	13,644	14,012	14,423
East St Paul RM	1,254	1,330	1,398	1,484	1,568
Fort Garry Community	8,652	8,968	9,430	9,797	10,095
Inner City - North	6,681	6,797	6,882	6,920	7,085
Inner City - South	9,108	9,305	9,506	9,660	9,876
Inner City - West Central	9,678	9,874	10,098	10,229	10,478
St Boniface Community	8,242	8,499	8,786	9,010	9,216
St James - North	1,736	1,864	1,993	2,169	2,324
St James - West Central	11,807	11,935	12,052	12,097	12,274
St Vital Community	10,491	10,980	11,482	11,926	12,477
Transcona Community	3,754	3,923	4,056	4,202	4,376
West Kildonan Community	8,851	9,211	9,585	10,000	10,306
West St Paul RM	812	818	843	858	896
Non-FN Sub-Total	102,883	106,119	109,364	112,306	115,656
R.H.A. Total	102,883	106,119	109,364	112,306	115,656