

Part 1

Manitoba Population Report – 2015

Introduction and Overview

Population Changes

The purpose of this section is to highlight changes in the population of Manitoba. Changes are determined by comparing the registration file for the current year to that of the previous year. A file is created for additions (residents on the current file but not on the previous file) and one for deletions (residents on the previous file and not on the current file). After determining reason for coverage or cancellation, those coded as deaths, births and other(1) are separated, leaving only arrivals and departures. The deletions are subtracted from the additions with a resulting net migration.

Figures 1a, 1b, and 1c depict the actual number of residents cancelled from the registration system upon notification of death during the period June 1, 2014 to June 1, 2015. Figures 1b and 1c are female and male profiles.

Figures 2a, 2b, and 2c represent population migration. In-migration and out-migration with a resulting net migration trend line are depicted. Manitoba gained population through in-migration between June 1, 2014 and June 1, 2015. There were 30,214 in-migrants and 14,931 out-migrants resulting in a net in-migration of 18,823. Figures 2b and 2c are the female and male trends.

(1) Member of the Armed Forces, inmate of a penitentiary, or not located.

Figure 1a

Number of Deaths by Single Year of Age - June 1, 2014 to June 1, 2015

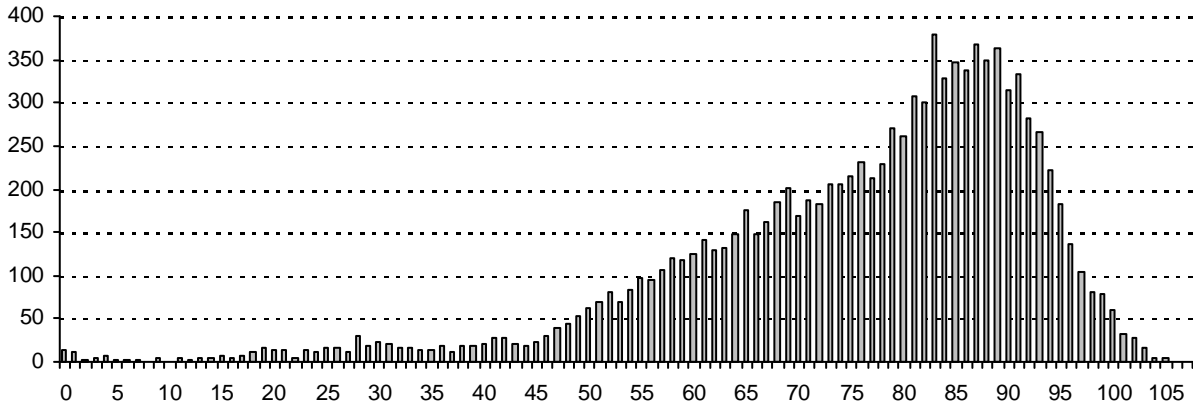


Figure 1b

Number of Female Deaths by Single Year of Age - June 1, 2014 to June 1, 2015

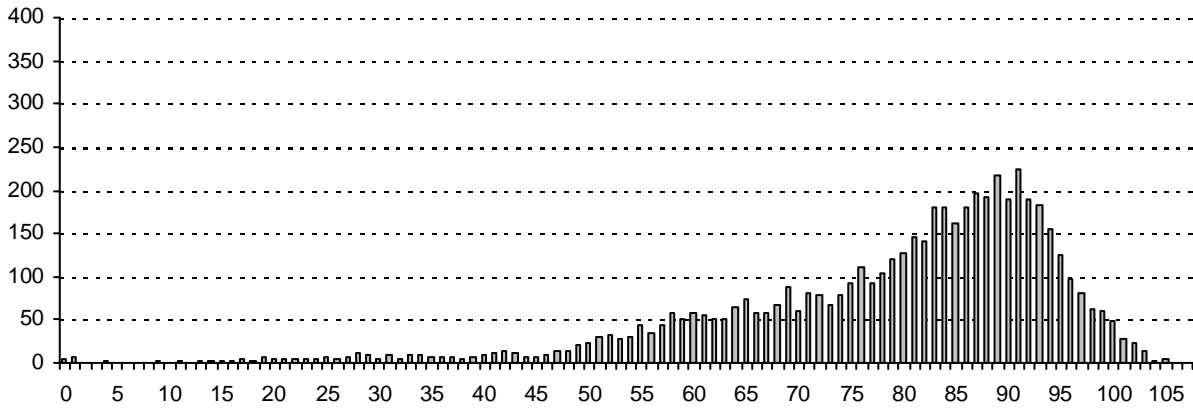


Figure 1c

Number of Male Deaths by Single Year of Age - June 1, 2014 to June 1, 2015

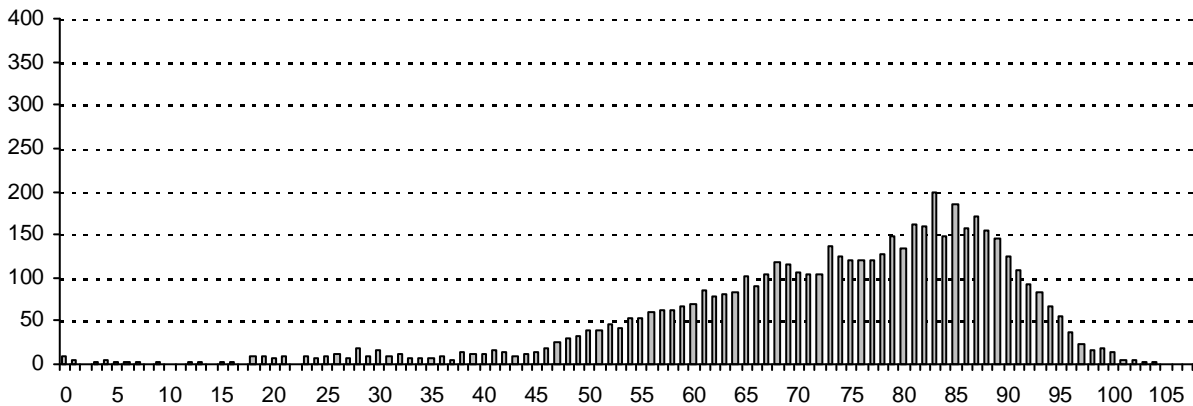


Figure 2a

Total Migration In and Out of the Province and Net Migration by Single Year of Age - June 1, 2014 to June 1, 2015

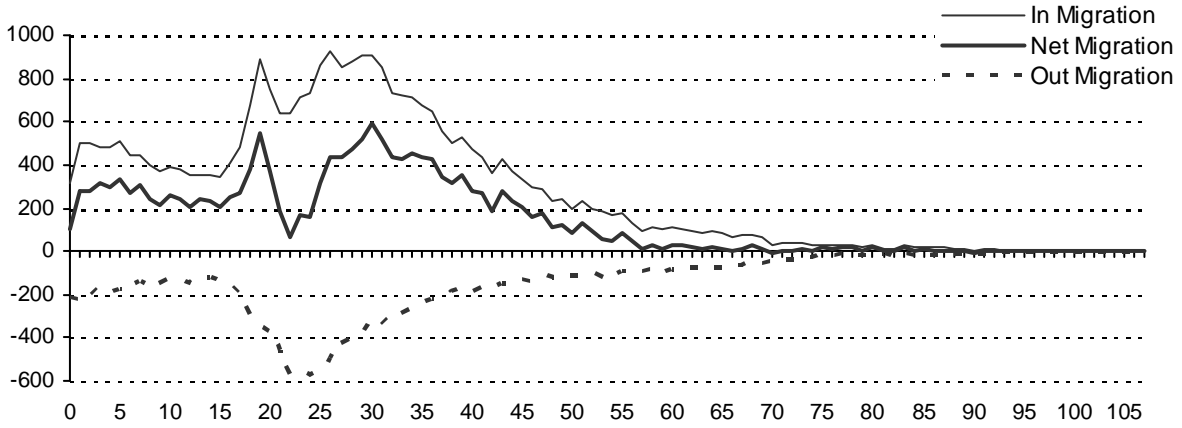


Figure 2b

Migration In and Out of the Province and Net Migration of Females by Single Year of Age - June 1, 2014 to June 1, 2015

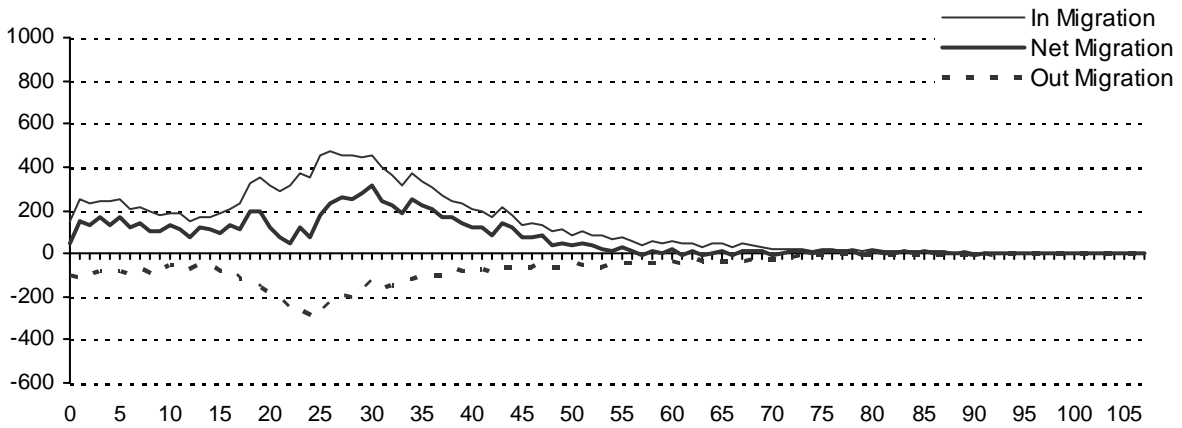


Figure 2c

Migration In and Out of the Province and Net Migration of Males by Single Year of Age - June 1, 2014 to June 1, 2015

